

USERGUIDE

Ref. 20E 867 0x

# CPU PG2037 / 10 Board



## **WARNING - Reliance on this Manual Could Result in Severe Bodily Injury or Death!**

This manual is out-of-date and is provided only for its technical information, data and capacities. Portions of this manual detailing procedures or precautions in the operation, inspection, maintenance and repair of the product forming the subject matter of this manual may be inadequate, inaccurate, and/or incomplete and cannot be used, followed, or relied upon. Contact Conair at [info@conairgroup.com](mailto:info@conairgroup.com) or 1-800-654-6661 for more current information, warnings, and materials about more recent product manuals containing warnings, information, precautions, and procedures that may be more adequate than those contained in this out-of-date manual.

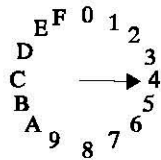
# CPU PG 2037 / 10 BOARD

Ref. 20E 867 0x

This is a 32 bit VME microprocessor board that contains the software as well as the memory for user programs (RAM 32 k Bytes ; 128 k Bytes (optional)).

Using the RS 232c series port (X3), you can connect a compatible PC (option). With the CAN link (X4) you can connect the pendant, amongst other things.

The Boot switch (BO) must be in position 4 for “normal” robot use :



| BO position | Result when cabinet is powered up   |
|-------------|---|
| 0           | The executable code and the message data base can be downloaded.  |
| 4           | Normal robot operation.   |
| 6           | Robot's work variables are reset without affecting the programs or parameters. When the board is energized for the first time, it starts at 1 Mb/s.   |
| 7           | Robot's work variables are reset without affecting the programs or parameters. When the board is energized for the first time, it starts at 500 kb/s. |
| 8           | General memory reset and default parameters are recovered.  |
| C           | Parameters are reset and default parameters are recovered without affecting the customer's programs.  |

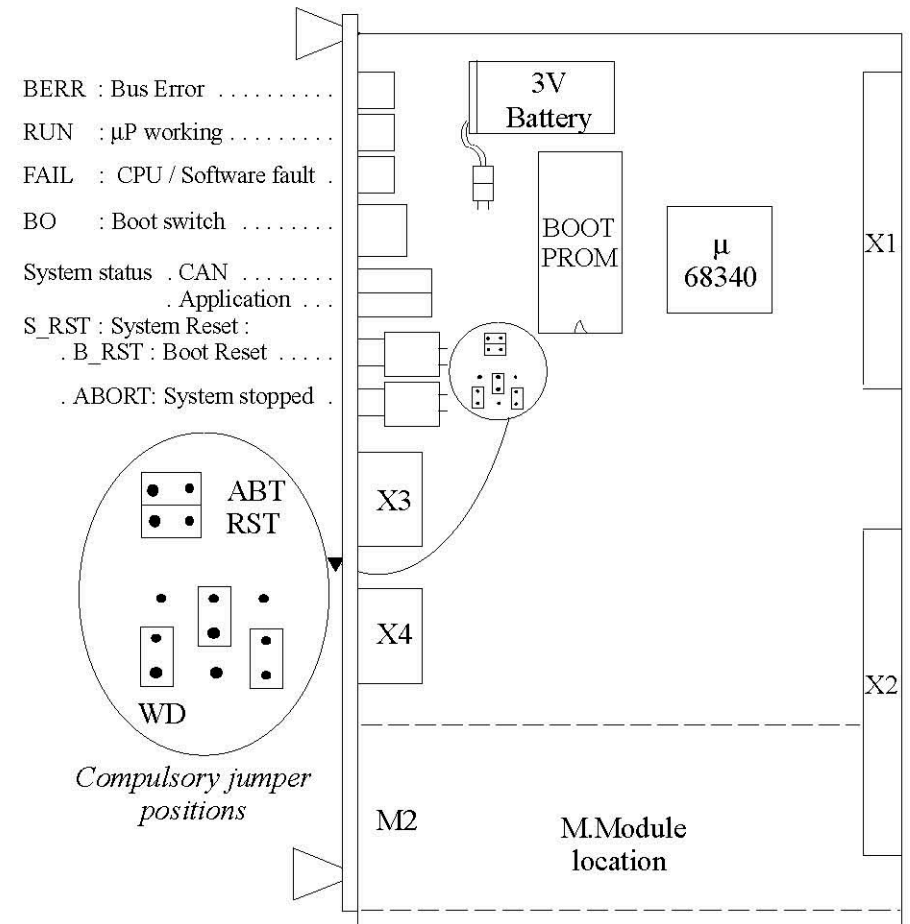
The battery must be replaced :

- ▶ every 3 years or,
- ▶ as soon as the voltage is less than 2.8V.

If the battery connectors are fixed onto the board (20E86701 |->), the reference of the replacement battery is : 40E 697 0x.

If the connectors are fixed onto the actual battery (20E86700 board), the reference of the replacement battery is : 40E 698 0x.

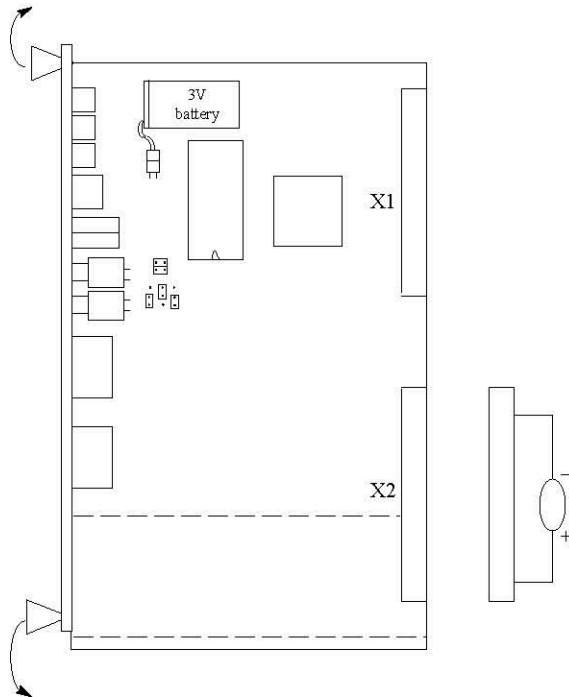
See the following page for how to change the battery.



Replacing the battery :

You are advised to either save the robot's programs and parameters on the PC or diskettes, or print them, in order to protect you from any eventual manipulation errors.

- ▶ Before starting, make sure that the new battery has a voltage of at least 2.8 Volts. If this is not the case, the programs will be lost during the replacement.
- ▶ Cut the power supply to the cabinet.
- ▶ Loosen and remove the connectors on the front of the board.
- ▶ Loosen the 2 fixing screws on the front of the CPU board.
- ▶ Remove the CPU board by gently pulling the board's handles outwards.



- ▶ Hold the board by its handles and do not touch the components or the tracks. Place the board on a clean, non metallic support.
- ▶ The battery replacement kit is delivered with a connector equipped with a battery. This connector is used to maintain a back-up voltage when the battery is removed from the board. It **must be connected to X2**. You then have one hour to replace the battery.
- ▶ Replace the old battery with the new one.
- ▶ Reposition the board in the rack.
- ▶ Tighten the fixing screws and the connectors.
- ▶ Power up the cabinet again.