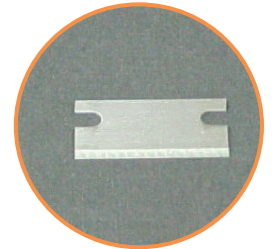
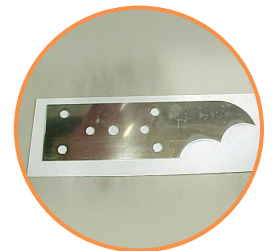


Cutter Blades

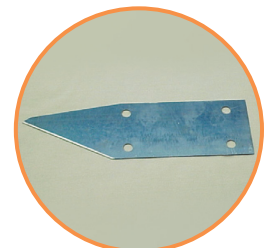
Used On	Part Number	Length	Width	Thickness	Material	Style
ATC	3515-01807	1.625"	0.75"	0.46"	Stainless	Straight
CSC	71310101	3.00"	0.54"	0.014"	M-2 Steel	Straight
	71310102	3.00"	0.54"	0.010"	M-2 Steel	Straight
CSC-2	3515-30016	5.875"	1.875"	0.025"	Stainless	Straight
	3515-30032	6.125"	2.625"	0.025"	Stainless	Curved
CSC-3	3515-30024	6.62"	2.10"	0.025"	Stainless	Straight
	3515-30024-1	6.62"	2.10"	0.042" & 0.050"	Spring Steel	Straight
	3515-00975	3.00"	0.75"	0.025"	Spring Steel	Straight
	7130320101	6.679"	3.585"	0.015"	Spring Steel	Curved
	7130320102	6.679"	3.585"	0.025"	Spring Steel	Curved
	7130320103	6.679"	3.585"	0.032"	Spring Steel	Curved
CSC-4	7130320301	7.483"	3.163"	0.025"	Spring Steel	Straight
	7130320302	7.483"	3.163"	0.032"	Spring Steel	Straight
	7130320201	8.105"	3.965"	0.025"	Spring Steel	Curved
	7130320202	8.105"	3.965"	0.032"	Spring Steel	Curved
	7130320203	8.105"	3.965"	0.031"	Stainless	Curved
	7130320204	8.105"	3.965"	0.042"	Spring Steel	Curved
	7130320205	8.105"	3.965"	0.050"	Spring Steel	Curved
CSC-5	7130320501	8.448"	3.474"	0.025"	Spring Steel	Straight
	7130320502	8.448"	3.474"	0.032"	Spring Steel	Straight
	7130320401	9.762"	4.203"	0.025"	Spring Steel	Curved
	7130320402	9.762"	4.203"	0.032"	Spring Steel	Curved
ERC-2	3515-00126	6.6875"	2"	0.046"	Spring Steel	Straight
	3515-01149	6.75"	2"	0.025"	Stainless	Curved
	3515-00134	7"	2"	0.025"	Spring Steel	Batwing
	3515-00436	7"	2"	0.025"	Spring Steel	Straight
ERC-2 Special	3515-00711	7.5"	2.125"	0.050"	Spring Steel	Straight
ERC-2 / ODC-2	3515-00061	6.625"	2"	0.025"	Spring Steel	Straight
	3515-00436	7"	2"	0.025"	Spring Steel	Straight
	3515-01939	7.625"	2"	0.025"	Spring Steel	Straight
ERC-2 / RC-2	3515-00169	6"	0.75"	0.025"	Stainless	Straight
ERC - 2/4, RC-2/4 / USC / PSC-20/30	3515-01289	6"	0.75"	0.025"	Carbon Steel	Double Edge
ERC-4	3515-00193	9.75"	2"	0.046"	Stainless	Straight



3515-01807



3515-00134



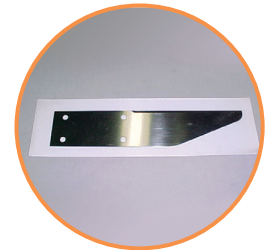
3515-00061



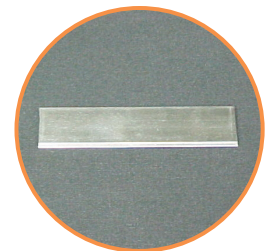
3515-00169

Cutter Blades (continued)

Used On	Part Number	Length	Width	Thickness	Material	Style
ERC-4 (F-075 ONLY)	3515-00215	9.75"	2"	0.046"	Stainless	Straight
ERC-4 (F-125 ONLY)	3515-00827	9.5"	1.75"	0.046"	Stainless	Straight
MDL	3515-00975	3"	0.75"	0.025"	Spring Steel	Razor
	3515-02285	3.25"	0.75"	0.015"	Stainless	Razor
	MZ8052-0015	1.5"	0.56"	0.004"	Stainless	Razor
	MZ8052-0016	1.5"	0.56"	0.010"	Stainless	Razor
	71311853	1.5"	0.312"	0.010"	Stainless	Razor
	3515-00053	1.5"	0.312"	0.010"	Stainless	Injector
ODC	3515-30224-1	7.25"	1.745"	0.025"	Spring Steel	Straight
ODC-1	3515-00975	3"	0.75"	0.025"	Spring Steel	Straight
ODC-2	3515-02285	3.25"	0.750"	0.015"	Stainless	Straight
	3515-02102	7.0625"	2.0625"	0.025"	Spring Steel	Straight
	3515-01742	7.125"	2.0625"	0.046"	Stainless	Curved
Pencil Blade	71303206	3.125"	1.313"	0.010"	Spring Steel	Double Edge
PSC-20 / SSC-2 /	3515-30088	5.875"	1.4375"	0.010"	Stainless	Straight
VSC-20	3515-30096	5.875"	1.4375"	0.015"	Stainless	Straight
	3515-30104	5.875"	1.4375"	0.020"	Stainless	Straight
	3515-30016	5.875"	1.875"	0.025"	Stainless	Straight
	3515-30064	6.125"	2.625"	0.010"	Stainless	Curved
	3515-30072	6.125"	2.625"	0.015"	Stainless	Curved
	3515-30080	6.125"	2.625"	0.020"	Stainless	Curved
	3515-30032	6.125"	2.625"	0.025"	Stainless	Curved
	3515-30024	6.62"	2.12"	0.025"	Stainless	Straight
	3515-30024-1	6.62"	2.12"	0.025"	Spring Steel	Straight
	PSC-20 / SSC-2 /	3515-30128	6.75"	1.5625"	0.020"	Stainless
VSC-30	3515-30112	7.125"	3.4375"	0.020"	Stainless	Curved
	3515-30040	7.125"	3.4375"	0.025"	Stainless	Curved
	3515-30120	7.125"	3.4375"	0.031"	Stainless	Curved
RC-2	3515-00029	2.25"	0.75"	0.015"	Stainless	Straight
	3515-00045	6"	0.312"	0.010"	Carbon Steel	Straight
RC-2 / RC-4	3515-01807	1.625"	0.75"	0.037"	Stainless	Straight
	3515-30184	2"	0.75"	0.025"	Carbide	Straight
RC-2 / RC-4 / SC-5	3515-30192	3.0625"	0.625"	0.014"	M-2 Steel	Batwing



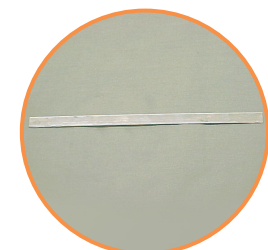
3515-00193



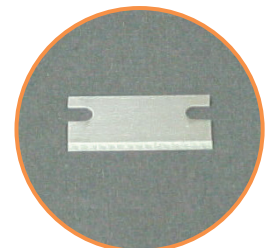
3515-00975



3515-30112



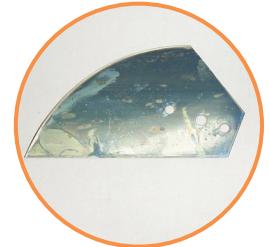
3515-00045



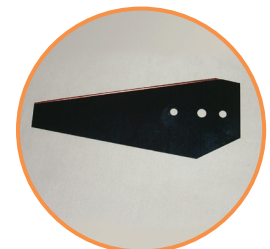
3515-01807

Cutter Blades (continued)

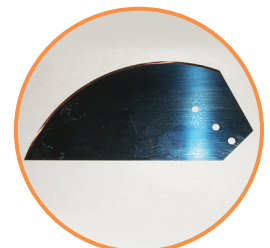
Used On	Part Number	Length	Width	Thickness	Material	Style
SCE / SCX / PSC	7130320101	6.679"	3.585"	0.015"	Spring Steel	Curved
	7130320102	6.679"	3.585"	0.025"	Spring Steel	Curved
	7130320103	6.679"	3.585"	0.032"	Spring Steel	Curved
SCE / SCX5	7130320301	7.483"	3.163"	0.025"	Spring Steel	Straight
	7130320302	7.483"	3.163"	0.032"	Spring Steel	Straight
	7130320201	8.105"	3.965"	0.025"	Spring Steel	Curved
	7130320202	8.105"	3.965"	0.032"	Spring Steel	Curved
	7130320203	8.105"	3.965"	0.031"	Stainless	Curved
	7130320204	8.105"	3.965"	0.042"	Spring Steel	Curved
	7130320205	8.105"	3.965"	0.050"	Spring Steel	Curved
	7130320501	8.448"	3.474"	0.025"	Spring Steel	Straight
	7130320502	8.448"	3.474"	0.032"	Spring Steel	Straight
	7130320401	9.762"	4.203"	0.025"	Spring Steel	Curved
7130320402	9.762"	4.203"	0.032"	Spring Steel	Curved	
SC-5 Sure cut	0235-30488	11.5"	5.03"	0.025"	Spring Steel	Curved
	0235-30488-01A	11.5"	5.03"	0.032"	Spring Steel	Curved
	0235-30488-01B	11.5"	5.03"	0.042"	Spring Steel	Curved
	0235-30488-01C	11.5"	5.03"	0.050"	Spring Steel	Curved
	0235-30488-01D	11.5"	5.03"	0.062"	Spring Steel	Curved
	0235-30488-02	11.5"	5.58"	0.025"	Spring Steel	Curved
	0235-30488-02A	11.5"	5.58"	0.032"	Spring Steel	Curved
	0235-30488-02B	11.5"	5.58"	0.042"	Spring Steel	Curved
	0235-30488-02C	11.5"	5.58"	0.050"	Spring Steel	Curved
	0235-30488-02D	11.5"	5.58"	0.062"	Spring Steel	Curved
	0235-30496	9.5"	4.08"	0.025"	Spring Steel	Straight
	0235-30496-01	9.0"	4.08"	0.025"	Spring Steel	Straight
	0235-30496-1	6.48"	4.08"	0.025"	Spring Steel	Straight
	0235-30496-2	8.33"	4.08"	0.025"	Spring Steel	Straight
	0235-30560-2	11.15"	5.58"	0.042"	Spring Steel	Curved
	0235-30560-1	10.14"	5.58"	0.042"	Spring Steel	Curved
	0235-30568-3	9.5"	4.08"	0.031"	Spring Steel	Straight
	0235-30568-2	8.33"	4.08"	0.031"	Spring Steel	Straight
	0235-30568-1	6.48"	4.08"	0.031"	Spring Steel	Straight
	7130150303	9.25"	4.0625"	0.041"	Spring Steel	Straight
	7130150302	9.25"	4.0625"	0.031"	Spring Steel	Straight
	7130150301	9.25"	4.0625"	0.025"	Spring Steel	Straight
	7130150203	8.3437"	3.3125"	0.041"	Spring Steel	Straight
	7130150202	8.3437"	3.3125"	0.031"	Spring Steel	Straight
	7130150201	8.3437"	3.3125"	0.025"	Spring Steel	Straight
7130150103	6.5"	3.0937"	0.041"	Spring Steel	Straight	
7130150102	6.5"	3.0937"	0.031"	Spring Steel	Straight	
7130150101	6.5"	3.0937"	0.025"	Spring Steel	Straight	



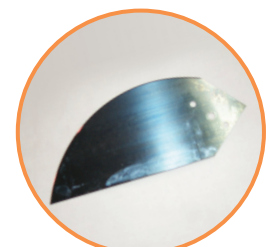
7130320102



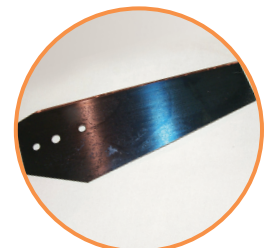
7130320302



7130320202



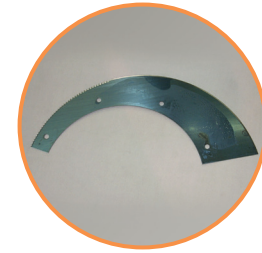
7130320401



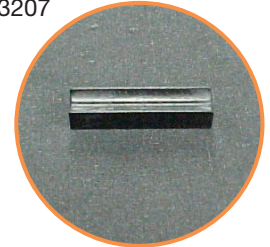
7130320502

Cutter Blades (continued)

Used On	Part Number	Length	Width	Thickness	Material	Style
Serrated Blade	71303208	3.346"	0.362"	0.016"	Razor Blade	Straight
	71303207	10.75"	5.625"	0.020"	Spring Steel	Serrated
Straw Wrapper	3515-00223	0.875"	0.312"	0.025"	Stainless	Straight
TPC Series	MZ19-25632-1319	1.75"	0.38"	0.026"	A2 Tool Steel	Straight
	MZ05-175-1305	0.960"	0.697"	0.024"	Razor Blade	Straight



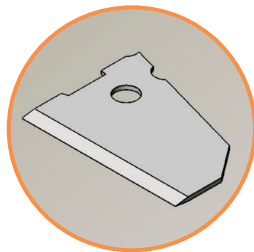
71303207



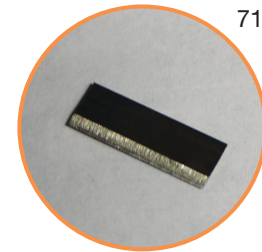
71303208



MZ19-25632-1319

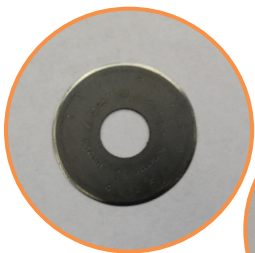


MZ05-175-1305



3515-00223

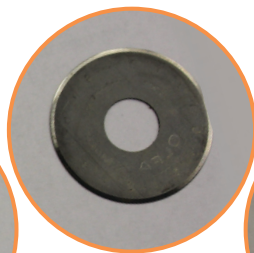
Used On	Part Number	OD	Bore	Thickness	Material
TPC Series	MZ05-175-1300	28 mm	0.379"	0.012"	Spring Steel
	MZ05-175-1301	18 mm	0.313"	0.012"	Spring Steel
	MZ8053-0184	18 mm	Hex Bore	0.012"	Spring Steel
	MZ05-175-1304	45 mm	0.313"	0.012"	Spring Steel
	VPKNF-3	45 mm	0.501"	0.031"	Spring Steel
	MZ05-175-1306	45 mm	0.501"	0.012"	Spring Steel



MZ205-175-1300



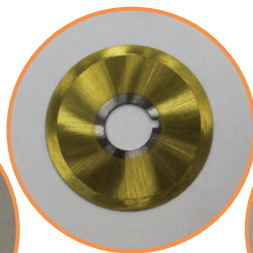
MZ205-175-1301



MZ05-175-1304



MZ8053-0184



VPKNF - 3



MZ05-175-1306