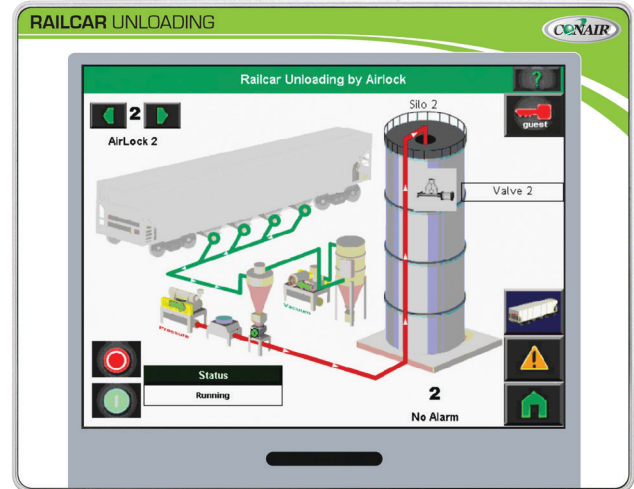


Manage bulk-resin handling securely and economically.

The powerful Conair Railcar Unloading (RCU) package integrates control functions for multiple railcar unloading systems, airlocks, material-routing valves, and silo monitors/loaders into a single touchscreen display. It enables authorized users to view and manage the entire process – railcar unloading, silo sections, material routing, and silo filling – from any connected touchscreen HMI, anywhere in the plant.



Railcar Unloading by Airlock Screen

Manage Bulk-Resin Storage In Up To 30 Silos

Available as an option for any FLX-128 Plus material-handling control system, or as a standalone control package, Conair's RCU controller offers a time-saving, secure, and expandable solution for centrally monitoring and managing the unloading and storage of railcar-quantity resins.

The RCU controller includes a WAGO PLC, an I/O control panel, and a separate 10-inch high-resolution HMI monitor designed for indoor/outdoor use. In plants equipped with Conair's FLX-128 Plus material handling control, the RCU PLC and control I/O plug directly into the main FLX-128 Plus panel. Otherwise, the RCU can operate in stand-alone mode.

▶ Powerful outdoor module

The RCU is powerful enough to manage: up to five railcar unloading systems; up to five airlocks, which transfer incoming material from vacuum-powered railcar unloaders to the pressure-driven conveying and silo-loading system; up to 12 multi-position valves (2-way, 3-way, or 4-way), which are used to direct material flows through conveying tubing to the selected silo; filling and level monitoring operations in up to 30 silos.

▶ Ethernet communication to the FLX-128 Plus network

This module pulls the Railcar Unloading, Silo Inventory, and Plant conveying system all to one FLX 128 network for viewing on any FLX-128 Plus HMI. Simple system backup via SD card.

▶ Outdoor-friendly screen

The RCU HMI screen is larger and brighter for outdoor installation. Even on a sunny day you will have no problems viewing the display. There is also graphical feedback of system set-up, operation and valve position; know your system status at a glance.

▶ Auto-shutdown

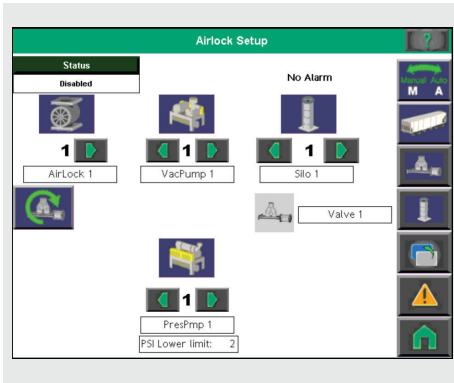
Pressure sensors in the system will allow for auto-shutdown through the control.

▶ Know your system status at a glance

Graphical feedback of system set-up, operation and valve position with Momentary and Continuous valve control.

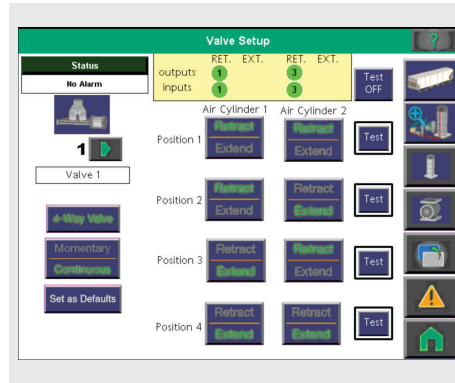


Features



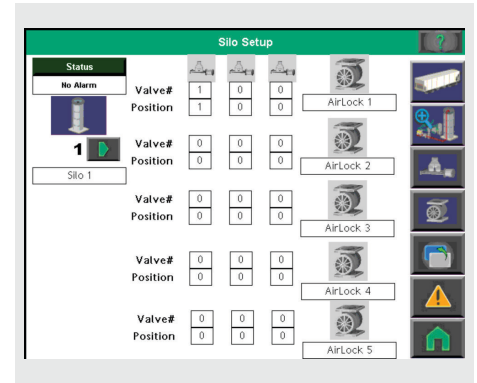
Airlock Setup

The Airlock Setup screen is where the pumps and silos are assigned to the appropriate airlocks via the green arrows. Any airlock, pump, or silo can be renamed to match any system drawings. Minimum pressure limits in PSI can also be assigned to each airlock/pump combination. One airlock can be assigned an airlock valve to allow a pump to be shared between multiple airlocks.



Valve Setup

Pressing the set to defaults button will assign all the valves are momentary and set the default retract and extend states for each valve in the system based on Selina vortex valves. These setting can be changed manually if these types of valves are used. Valve names can also be changed to match any system drawings. Use the test buttons to test the outputs and inputs of each valve.



Silo Setup

Assign the appropriate valves and valve positions to each silo/airlock combination based on your system drawings. Use the green arrows to cycle through each silo until all silos in the system are configured for each airlock.

Specifications

Models	RCU
Performance characteristics	
Maximum number of silos	Up to 30
Maximum number of pumps*	Up to 5 vaccum and 5 pressure
Maximum number of airlocks*	Up to 5
Maximum number of valves	Up to 12
Programmable Logic Controller (PLC)	
Main control panel / FLX-128 Plus	RedLion PLC
RCU outdoor HMI	WAGO PLC
Screen size - diagonal inches {mm}	10 {254}

Specification Notes
* All pumps and airlocks must have individual motor starters. Purchased separately.
Specifications may change without notice. Consult with a Conair representative for the most current information.

