

Electro-Mechanical Coupling Lock For Proofing Silo Truck- Fill Connections.

The most costly mistakes are often the ones that happen the fastest. It's very easy to accidentally connect the flexible Truck-Fill line to the incorrect silo, creating thousands of pounds of mis-directed resin.

Conair's Silo Truck-Fill Line Proofing system significantly reduces the possibility for error, as an electronically locked coupling will NOT release unless authorized. This ensures that the material is only conveyed to the correct silo.



Truck Fill Proofing Control



Truck Fill Coupling Lock
(truck fill line with camlock not included)

Proofing That Pays For Itself Every Time, Day After Day

We've seen it all. Processing plants use all kinds of preventative methods in an attempt to deter truck drivers or others from connecting their hose to the wrong silo fill tube. Errors of this nature can cost 10's to 100's of thousands of dollars in resin, not to mention lost production or worse yet, having parts made from the incorrect resin making it to the consumer.

Conair's Silo Truck-Fill Line Proofing system can be retrofitted to existing silos as a stand-alone enhancement. All silo fill quick-change couplings are mechanically locked, and are only opened by plant pre-authorized supervisors who can login to the control platform and unlock the appropriate silo fill line.

Once the material has been conveyed, the control maintains detailed logs of who made what connections, and how long the connection was in place. The proofing system experts at Conair (patents for Invisible Line Proofing and Material Vision Proofing) have just taken proofing technology to the next level – the Truck-Fill level.

- ▶ **System proofing accuracy from truck to silo, tracked and logged**
The Silo Truck-Fill Line Proofing module ensures that only the appropriate connection can be made, by way of a secure interlock device. Connections are authorized, tracked, and logged through the control.
- ▶ **Easy-to-use-control**
The stand-alone control allows for simple operation. Authorized individuals can enable connections, and allow conveying to begin. Once filling is completed, and the silo line cap is replaced, the system locks itself until the next authorized time.
- ▶ **Easily retrofitted**
The system is easy to retrofit to existing silos, using the pipe-mounting brackets provided. While Conair installation specialists are prepared to handle new and retrofit installations, In the vast majority of situations installation can be completed by your own maintenance personal. Installation typically takes less than a day, depending on how many silos you have in your system.
- ▶ **Prevent the inevitable**
We all know that in the hurry of everyday work, people sometimes make mistakes. The Silo Truck-Fill Line Proofing system from Conair was developed to prevent the inevitable. Without this system, it's possible that sooner or later, the flexible line from the truck would be connected to the wrong silo. Thousands of pounds of resin goes to the wrong place. This one quick mistake can be costly. The Silo Truck-Fill Line Proofing system will significantly reduce, if not eliminate, the possibility of human error that can cause this costly mistake.



How it Works



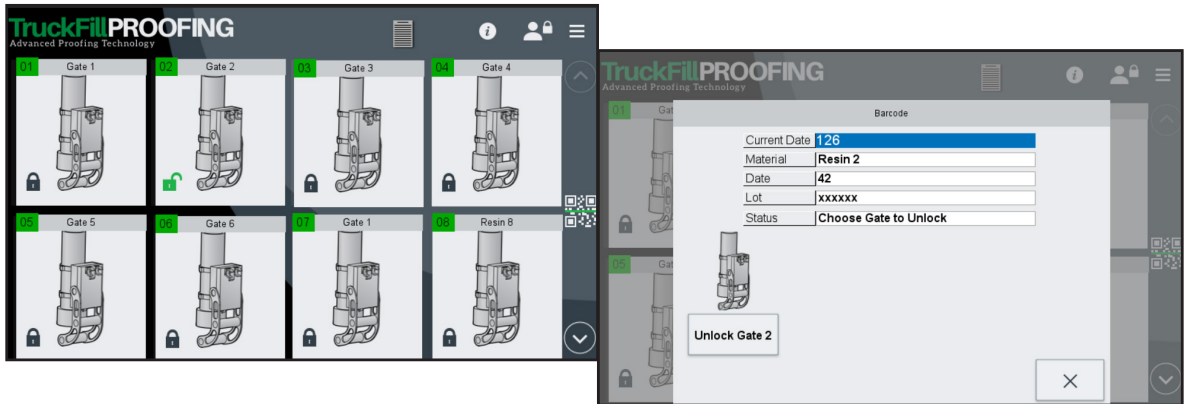
Truck-Fill line proofing — Quick change couplings

All silo fill quick change couplings are mechanically locked, and unable to be opened without authorization. Plant pre-authorized supervisors can login to the control platform and unlock the appropriate silo fill line. Required inputs are customizable, and can include information such as truck number, material number, order number, pass code or optional scanned bar codes. The system will not allow for the connection to be made unless the appropriate information has been entered, by authorized personnel.

Control

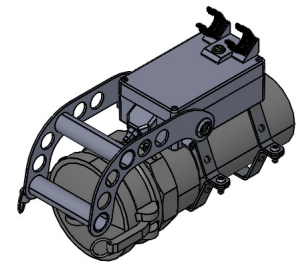
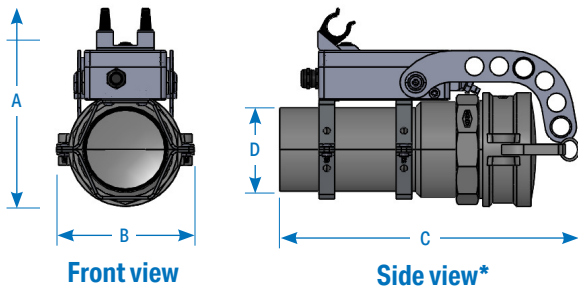
Intuitive Touchscreen Control

A simple-to-use control allows simple operation. Operators can quickly unlock the correct coupling, and view the entire system at a glance.



Specifications

Note - truck fill line with camlock not included. Shown for sizing reference only.



Isometric view

Models	Truck-Fill
Performance characteristics	
Control platform	Truck Fill Line Proofing Control
Coupling Lock Dimensions*[†] inches {mm}	
A - Height	9.47 {241}
B - Width	6.59 {167}
C - Depth	14.22 {361}
D - Line size	4.0 {102}
Approximate weight lb {kg}	
Installed	18
Shipping	24
Voltage	

24 VDC

Specification Notes

* Allow for clearance in front and top of the coupler for the locking mechanism to swing forward and up.

[†] The remote-mounted control enclosure is designed to be wall-mounted and intended for indoor use only. The dimensions of the enclosure box are: 20 inches tall {508 mm}, 20 inches wide {508 mm}, and 08 inches {203 mm} deep. The enclosure weighs under 100 lbs {45 kg}. Specifications may change without notice. Consult with a Conair representative for the most current information.

