

USER GUIDE
UGD077-0120

Dryer Process Protection Kit

Installation Guide for D Series Dryers with DC-C Plus (4-inch) Control



Please record your equipment's model and serial number(s) and the date you received it in the spaces provided.

It's a good idea to record the model and serial number(s) of your equipment and the date you received it in the User Guide. Our service department uses this information, along with the manual number, to provide help for the specific equipment you installed.

Please keep this User Guide and all manuals, engineering prints, and parts lists together for documentation of your equipment.

Date:

Manual Number: UGD077-0120

Serial Number(s):

Model Number(s):

DISCLAIMER: Neither Conair nor its employees shall be liable for errors contained in this User Guide or for incidental, consequential damages in connection with the furnishing, performance or use of this information. Conair makes no warranty of any kind with regard to this information, including, but not limited to, the implied warranties of merchantability and fitness for a particular purpose.

ATTENTION:

Read This So No One Gets Hurt

We design equipment with the user's safety in mind. You can avoid the potential hazards identified on this machine by following the procedures outlined below and elsewhere in the User Guide.



WARNING: Improper installation, operation, or servicing may result in equipment damage or personal injury.



This equipment should be installed, adjusted, and serviced by qualified technical personnel who are familiar with the construction, operation, and potential hazards of this type of machine.

All wiring, disconnects, and fuses should be installed by qualified electrical technicians in accordance with electrical codes in your region. Always maintain a safe ground. Do not operate the equipment at power levels other than what is specified on the machine serial tag and data plate.



WARNING: Voltage hazard



This equipment is powered by three-phase alternating current, as specified on the machine serial tag and data plate. Reference supplemental equipment's manuals for their power requirements.

A properly sized conductive ground wire from the incoming power supply must be connected to the chassis ground terminal inside the electrical enclosure. Improper grounding can result in severe personal injury and erratic machine operation.

Always disconnect and lock out the incoming main power source before opening the electrical enclosure or performing non-standard operating procedures, such as routine maintenance. Only qualified personnel should perform troubleshooting procedures that require access to the electrical enclosure while power is on.



WARNING: Voltage hazard

Adding this kit requires accessing a powered control enclosure. Only qualified personnel should perform troubleshooting procedures that require access to the electrical enclosure while power is on.

ATTENTION:

Read This So No One Gets Hurt

We design equipment with the user's safety in mind. You can avoid the potential hazards identified on this machine by following the procedures outlined below and elsewhere in the User Guide.



CAUTION: Hot Surfaces



Always protect yourself from hot surfaces inside the dryer and hopper. Also exercise caution around exterior surfaces that may become hot during use. These include the hopper door frame, the exterior of an uninsulated hopper, the return air hose and the dryer's process filter housing and exhaust outlet and the Hopper Temperature Controller (HTC) GasTrac Heater (CGT), or Heater Pack.



WARNING: Do not place aerosol, compressed gas or flammable materials on or near this equipment

The hot temperatures associated with the drying process may cause aerosols or other flammable materials placed on the dryer or hopper to explode.

Dryer Process Protection Kit

The Process Protection Kit comes as a package. Unpack the parts required for installation. Parts required for installation are:

- **USB with program - USB labeled “PLUS”**
- **(1) 1000 ohm RTD**
- **(1) Heyco strain-relief bushing**
- **(1) Heyco Wire grip (part 209-009-10)**
- **Micro USB connector**
- **RTD extension cable**
- **New software version label**

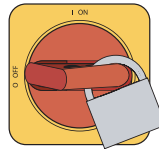
Tools Required for Installation

- Wire strippers*
- Flathead screw driver*
- Small terminal screw driver*
- 5/32” Allen Key*
- 3/16” Allen Key*
- 7/16” box wrench*

Time Required
30 min

Installing Dryer Process Protection RTD Probe

- 1 Disconnect and lock out the power supply.**



- 2 Open the electrical enclosure on the dryer using flat head screwdriver to turn the lock.**




IMPORTANT: Always use proper lock out tag out procedures when working inside an electrical enclosure. See Conair Dryer manual for proper procedures and practices. Only qualified personnel should complete this task, complying with all local, regional, and national procedures and regulations.

- 3 Remove Dryer cover panels. Use a 5/32nds Allen wrench and remove the 12 button-head Allen bolts that secure the top, sides, and back of the dryer cabinet to the frame. Carefully place the top and the sides/back panels aside.**

(Continued)

Installing Dryer Process Protection RTD Probe (Continued)

 **Note:** Refer to the wiring diagram that came with your kit for the various dryer sizes. Illustrations and photos shown are for representation purposes only.

- 4 Remove the Allen screw plug from the RTD port of the Delivery Air outlet of the dryer.



- 5 Remove the hose from the Dryer to access the process-air delivery stub at the exit of the unit. Using your 7/16" box wrench install the RTD into the hole as shown below. Before tightening, make certain that the tip of the RTD is located in the center of the delivery pipe.

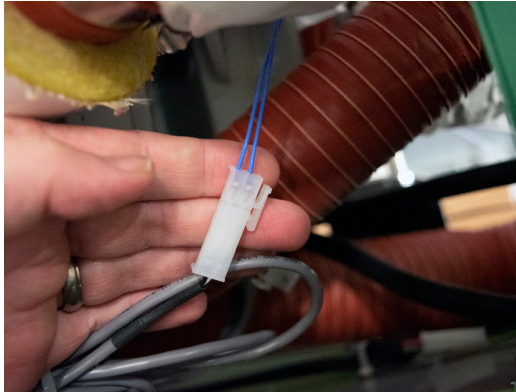


Proper Location of RTD Tip

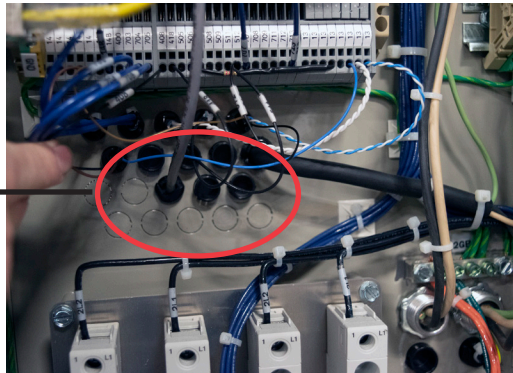


Installing Dryer Process Protection RTD Probe (Continued)

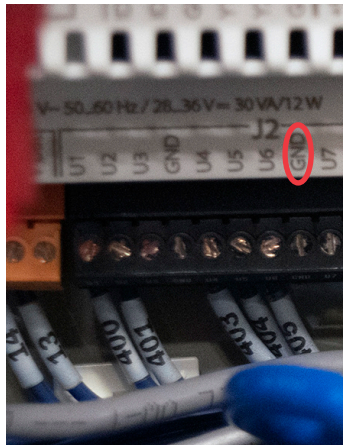
- 6** Make sure the cord is connected to the probe securely at the plug. Pass the probe wire through the supplied Heyco strain relief, and through a knock out in the metal between the control enclosure and the dryer mechanical area.



Knockouts



- 7** Strip and connect the black lead of the wire to the ground of the terminal block marked GND (beside terminal U6.)



Installing Dryer Process Protection RTD Probe (Continued)

- 8** Strip and connect the white lead of the wire to the U5 terminal of the block.



- 9** Clean up the wiring/wire path through the enclosure (control and mechanical).



- 10** Re-install the side/rear and top panels of the dryer.

Installing Process Protection Software Update to the PLC



IMPORTANT: Only Qualified personnel should perform this action.

- 1 Using the mini-USB adapter supplied, connect the program USB to the USB port on the PLC.



CAUTION: This procedure requires power to the dryer. Only qualified electricians should perform this action. Use caution.




- 2 Restore power at the main.
- 3 Turn on the dryer by using a crescent wrench on the lockout devise. The software will load.
- 4 Watch for the USB light to stop flashing. Software update is complete once the B/O screen appears on the 2-character display, and the USB light stops flashing.

The sequence should follow:


U (updating)
C (copying)
bo (rebooting)

After the 2-character display goes blank, remove the USB.

 **Note:** Entire process takes about two minutes.

- 5 Power off the dryer.
- 6 Place new software version label sticker on the PLC.
- 7 Close the electrical enclosure.

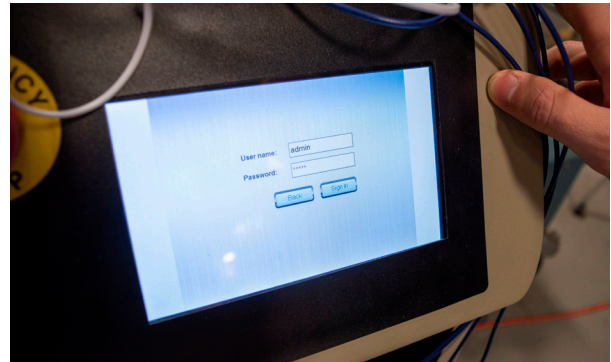
Installing the Process Protection Software Update to the HMI.

 **Note:** Your 4-inch screen will appear slightly different than shown in the samples. Navigation and process will be the same..

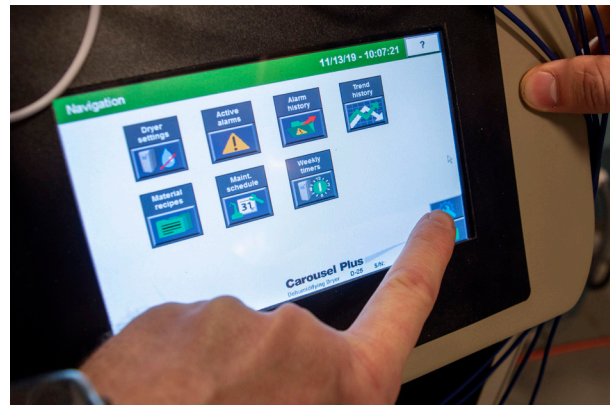
- 1** Insert the provided USB drive into the USB port on the side of the dryer.



- 2** Press the login (key) button on the home screen, and log in as “admin”.

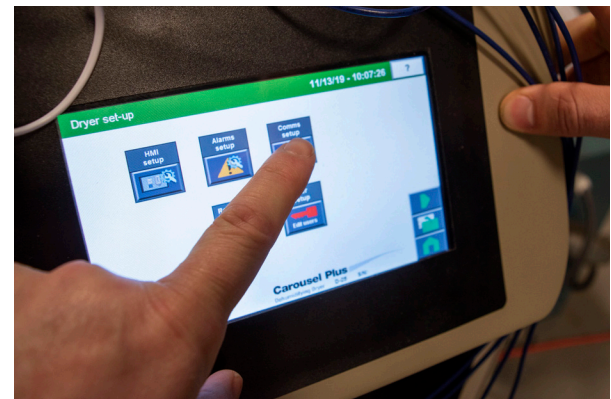


- 3** Press the Navigation button to access the navigation screen.



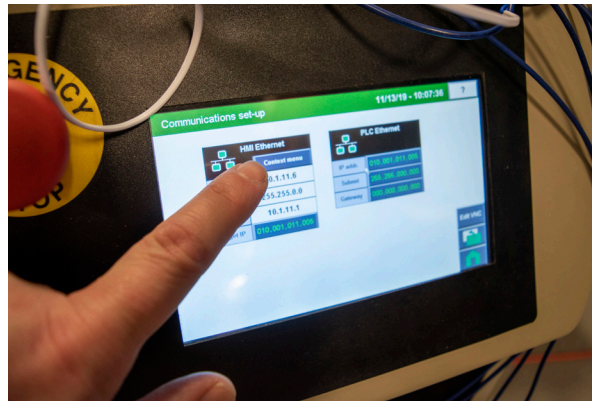
- 4** Press the settings button to access the settings screen.

- 5** Press the Comms setup button.



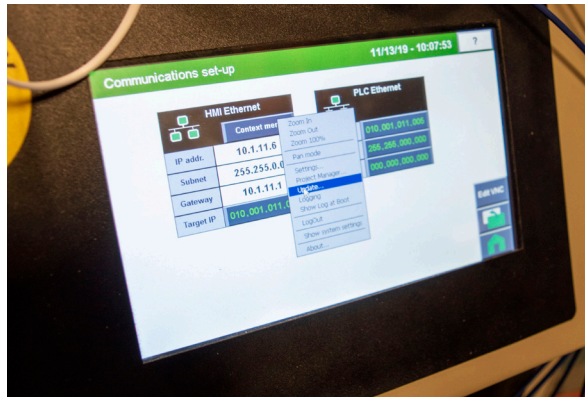
Installing the Process Protection Software Update to the HMI. (Continued)

- 6 Press the Context Menu button.

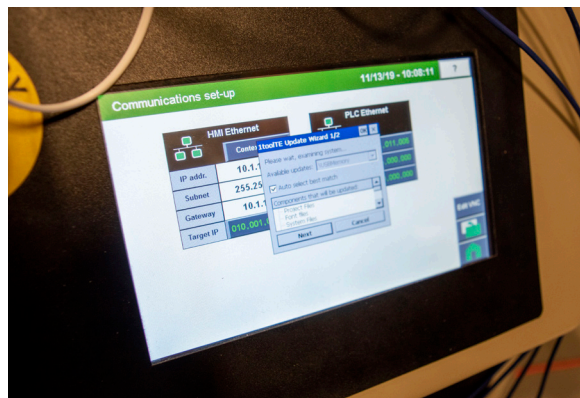


Note: Your 4-inch screen will appear slightly different than shown in the samples. Navigation and process will be the same.

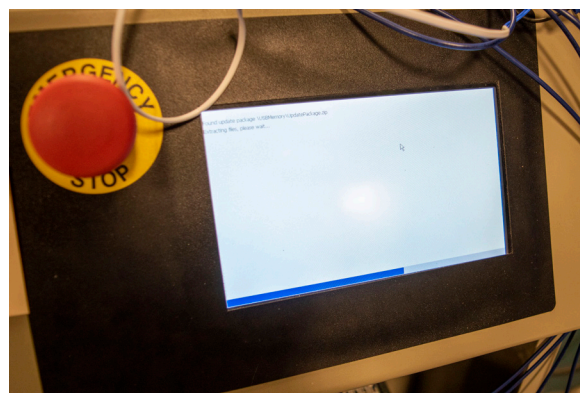
- 7 Choose “Update...” from the drop down window.



- 8 Check the box that says “auto select best match”, and press Next.



- 9 The updated software will load. Once the software has updated, the dryer control will turn off and back on. Update is now complete, and your dryer is ready to operate.



We're Here to Help

Conair has made the largest investment in customer support in the plastics industry. Our service experts are available to help with any problem you might have installing and operating your equipment. Your Conair sales representative also can help analyze the nature of your problem, assuring that it did not result from misapplication or improper use.

Additional manuals and prints for your Conair equipment may be ordered through the Customer Service or Parts Department for a nominal fee.


Most manuals can be downloaded free of charge from the product section of the Conair website.

www.conairgroup.com

How to Contact Customer Service

To contact Customer Service personnel, call:



 **NOTE:** Normal operating hours are 8:00 am - 5:00 pm EST. After hours emergency service is available at the same phone number.

From outside the United States, call: 814-437-6861

You can commission Conair service personnel to provide on-site service by contacting the Customer Service Department. Standard rates include an on-site hourly rate, with a one-day minimum plus expenses.

Before You Call...

If you do have a problem, please complete the following checklist before calling Conair:

- Make sure you have all model, control type from the serial tag, and parts list numbers for your particular equipment. Service personnel will need this information to assist you.
- Make sure power is supplied to the equipment.
- Make sure that all connectors and wires within and between control systems and related components have been installed correctly.
- Check the troubleshooting guide of this manual for a solution.
- Thoroughly examine the instruction manual(s) for associated equipment, especially controls. Each manual may have its own troubleshooting guide to help you.

Equipment Guarantee

Conair guarantees the machinery and equipment on this order, for a period as defined in the quotation from date of shipment, against defects in material and workmanship under the normal use and service for which it was recommended (except for parts that are typically replaced after normal usage, such as filters, liner plates, etc.). Conair's guarantee is limited to replacing, at our option, the part or parts determined by us to be defective after examination. The customer assumes the cost of transportation of the part or parts to and from the factory.

Performance Warranty

Conair warrants that this equipment will perform at or above the ratings stated in specific quotations covering the equipment or as detailed in engineering specifications, provided the equipment is applied, installed, operated, and maintained in the recommended manner as outlined in our quotation or specifications.

Should performance not meet warranted levels, Conair at its discretion will exercise one of the following options:

- Inspect the equipment and perform alterations or adjustments to satisfy performance claims. (Charges for such inspections and corrections will be waived unless failure to meet warranty is due to misapplication, improper installation, poor maintenance practices, or improper operation.)
- Replace the original equipment with other Conair equipment that will meet original performance claims at no extra cost to the customer.
- Refund the invoiced cost to the customer. Credit is subject to prior notice by the customer at which time a Return Goods Authorization Number (RGA) will be issued by Conair's Service Department. Returned equipment must be well crated and in proper operating condition, including all parts. Returns must be prepaid.

Purchaser must notify Conair in writing of any claim and provide a customer receipt and other evidence that a claim is being made.

Warranty Limitations

Except for the Equipment Guarantee and Performance Warranty stated above, Conair disclaims all other warranties with respect to the equipment, express or implied, arising by operation of law, course of dealing, usage of trade or otherwise, including but not limited to the implied warranties of merchantability and fitness for a particular purpose.

ITEM NO.	QTY	U/M	PART NUMBER	LOC	DESCRIPTION
1	1	EA	CHART		RTD ASSM, PT1000
2	1	EA	1886385501		CABLE ASSEM, RTD
3	1	EA	CHART		FLASH DRIVE, USB, PROGRAMMED
4	1	EA	26723611		ADAPTER, USB TO MICRO USB
5	1	EA	CHART		INSTRUCTIONS, THERMAL CUTOUT, DCC

⚠

BOM ITEM NUMBER ASSEMBLY NUMBER	DESCRIPTION	1 RTD ASSEMBLY CPN	3 FLASH DRIVE CPN	THERMAL INSTRUCTIONS CPN
1819990201	PROCESS PROT KIT, PREM., DCC-D, 15-25	20975833	26723612PROG	UGD074-0120
1819990202	PROCESS PROT KIT, PREM., DCC-D, 50-400	20975820	26723612PROG	UGD077-0120
1819990203	PROCESS PROT KIT, PLUS, DCC-D, 15-25	20975833	26723612PROG01	UGD077-0120
1819990204	PROCESS PROT KIT, PLUS, DCC-D, 50-400	20975820	26723612PROG01	UGD077-0120

⚠

⚠

⚠

⚠

<p>CONAIR GROUP PROPRIETARY THIS DOCUMENT CONTAINS PROPRIETARY INFORMATION. IT IS TO BE USED ONLY BY PERSONS HAVING WRITTEN AUTHORIZATION FROM CONAIR GROUP TO USE IT. NEITHER THIS DOCUMENT NOR THE CONTENTS HEREIN SHALL BE FURNISHED OR DISCLOSED TO OR COPIED OR USED BY PERSONS OUTSIDE OF CONAIR GROUP WITHOUT THE WRITTEN CONSENT OF CONAIR GROUP. COPYRIGHT © CONAIR GROUP 2017 (OR THE DATE OF FIRST PUBLICATION/DISTRIBUTION).</p>		<p>MACHINING TOLERANCES: FRACTIONS ±1/32 DECIMAL MACHINING: XX: ±0.015 XXX: ±0.005 FORMED SHEETMETAL: ±0.015 ANGLES: ±1/2° FINISH: 125</p>	
<p>CONAIR The Conair Group Inc. 200 West Kensingler Drive Crabtree Twp., PA 19086</p>		<p>PROCESS PROTECTION, KIT DCC-D</p>	
REV	BY	DATE	DATE
C	JRS	11/19/2019	10/8/2019
B	JRS	11/19/2019	10/8/2019
MULTIPLE CHANGES SEE ECN		APP	1 OF 1
MULTIPLE CHANGES SEE ECN		ECN	18199902
DESCRIPTION		DXF	C

