

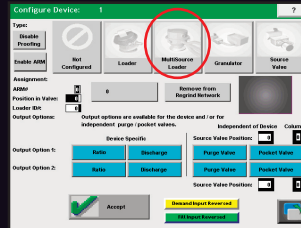
Setup Sourcing (Reverse Regrind)

The Reverse Regrind system is used as a way to unload a series of bins attached to a common loader. In this system, rather than sensing a demand for material (empty bin), the multi-source loader senses a full bin and removes material to evacuate that bin. Multiple grinder bins can be unloaded sequentially. To begin:

- 1 Press the Device button and choose a device group.



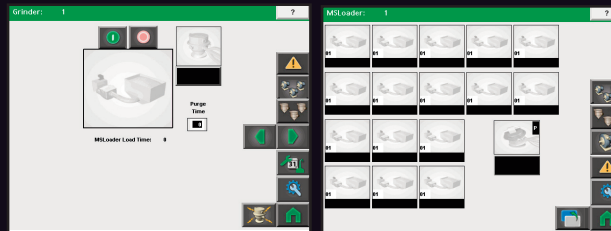
- 2 Choose a device to establish as a multi-source loader. Configure that device as a multi-source loader.



- 3 Press the Device button, choose a device group for the grinder.



- 4 Configure each grinder (valve) as a grinder and assign it to the multi-source loader. Now each grinder that is assigned to the multi-source loader will appear on its network. (Proper login is required.)



>>> **NOTE:** The location that multi-source loader is conveying to must be open and available in order to start unloading the grinder bins.

Device Configuration

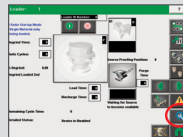
Each device is configured individually. Proper login is required. From the Individual Device screen press the Setup button. Depending upon I/O configurations, some loader configurations may not be available.

To Configure Each Device

- 1 Press the Devices button, followed by the device group you would like to access.

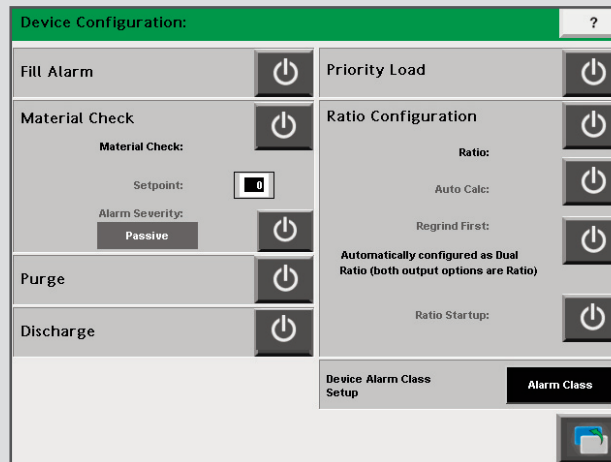


- 2 Press the device you would like to configure.



- 3 Press the Setup button on the screen. This will allow you to access the Device Configuration screen. (Proper login is required.) *See the Operation section of the FLX-128 User Guide for more information on Security.*

- 4 Choose which features and options you would like to enable. Depending on your configurations, this could include the Fill Alarm, Material Check, Purge, Discharge, Priority Load, Ratio configuration, and other settings.



WARNING: This card provides only basic troubleshooting and maintenance information. Users must be familiar with all safety information and procedures described in the FLX-128 User Guide.

Basic Operation

Quick Card

OCC020-0213

FLX-128 Central Loading Control



Enable Devices

>>> **NOTE:** In order to enable devices and utilize all the functionality of the FLX-128 control, all installation and setup instructions explained in the User Guide must be completed.

To Enable a Device

- 1 Turn on main power to the FLX-128. Wait for the Home screen to be displayed.

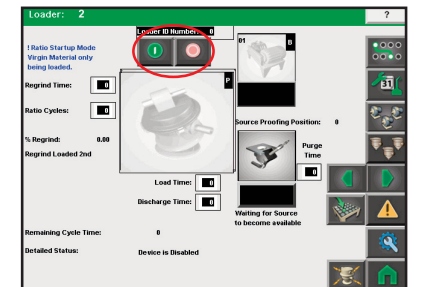
- 2 Press the Devices button then choose which device group you would like to access.



- 3 Press the Device you would like to enable.



- 4 Press the Enable device button.



Corporate Office: 724.584.5500
Instant Access 24/7 (Parts and Service): 800.458.1960
International: 814.437.6861 • www.conairgroup.com

The FLX-128 control panel

Screen name

Indicates the current screen displayed.

Individual devices or equipment

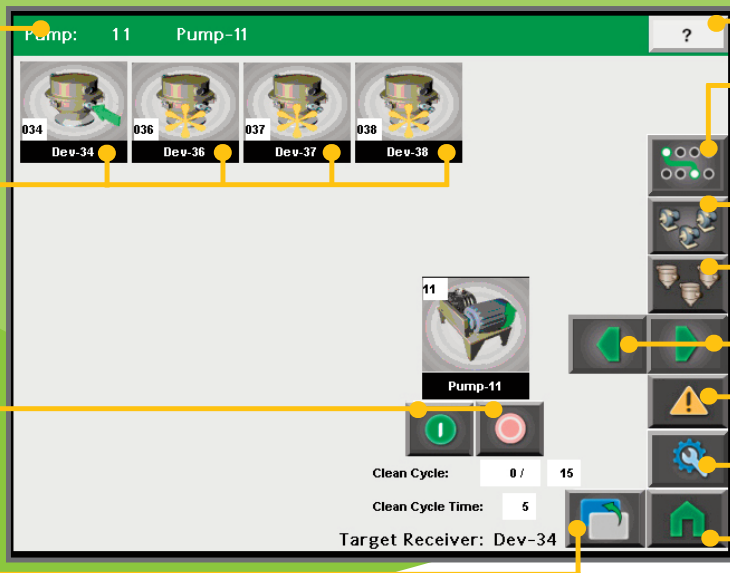
Displays the selectable individual pieces of equipment, with their current operating status. (demand, load, dump, etc.)

Start and Stop

Use these buttons to turn the pump (or other device) on or off.

Back/Previous Page button

Goes back to the previous page you were on.



Help Overview button
Help for the current screen.

ARM Control button
Go to the ARM control screen.

Pump Network button
Go to the Pump Network screen.

Device Selection button
Go to the Device Selection screen.

Previous/Next buttons
Go to the previous or next screen.

Alarms button
Go to the Alarms area.

Setup button
Go to the Setup screen.

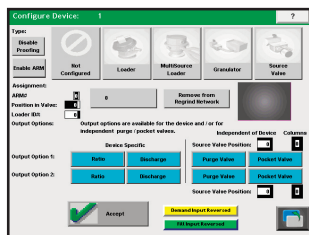
Home button
Go to the Home screen.

>>> **NOTE:** Depending on which options you have enabled, and what equipment you have connected to the FLX, your screens and icons may not appear exactly as shown on this screen and in this QuickCard.

WARNING: This card provides only basic troubleshooting and maintenance information. Users MUST be familiar with all safety information and procedures described in the FLX-128 User Guide.

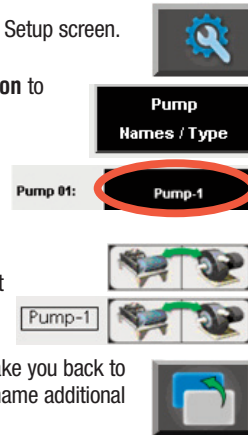
Setting Up a Device (loader, valve, etc.)

- 1 Press the **Setup** button to view the Setup screen.
- 2 Press the **Device Setup** button to view the Device Setup screen.
- 3 Press the black box beside the device number and use the pop up keypad to name this device.
- 4 Press the device number to begin to set up this device.
- 5 Choose the selections to set up your individual device. First the device type, followed by the assignment, output options, demand and fill inputs.
- 6 Press **Accept**.



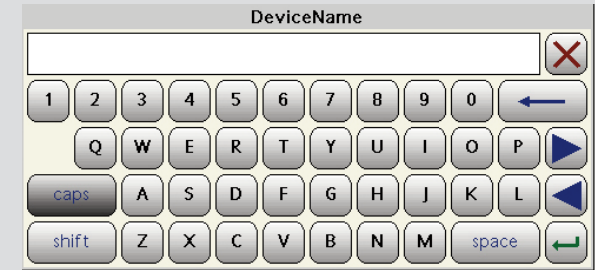
Setting Up a Pump Name and Type

- 1 Press the **Setup** button to view the Setup screen.
- 2 Press the **Pump Names/Type** button to view the Device Setup screen.
- 3 Press the black box beside the pump number and use the pop up keypad to name this pump.
- 4 Press the **Pump Type** button to set the type of pump for each pump.
- 5 Press the **Back** button. This will take you back to the previous screen where you can name additional pumps, or navigate to other screens.



Using the keypad

When using the controller, at times you are prompted to input numbers or words. When a keypad opens, you can make your inputs. Note that the entry will not be accepted until you press the green enter arrow. Use the shift button to access other symbols available for use. Use the blue delete arrow to delete selections.



Login / Logout

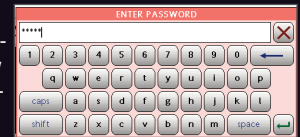
To Log In:

The user will have to log in for operator actions or screens which require security. Once logged in, the user will remain logged in until either the user logs out or the login times out (10 minutes.)

- 1 **Apply power to the machine.**
Allow the control to power up.
- 2 Press the **Security Level/Login** button.



- 3 Enter the username for your user level. See the Operation section of the FLX-128 User Guide for more information on Security.
- 4 Enter the password for your user level. Once you have successfully logged in, your security level will be displayed as a number in the Security Level/Login button.



To Log Out:

Once you are done changing settings, or if you are moving away from the FLX control, we recommend that you log out so that changes to settings can not be made by others.

- 1 Press the **Security Level/Login** button.
- 2 Leave the Username blank and press enter.
- 3 Leave the Password blank and press enter. The user level will return to "default" or zero.