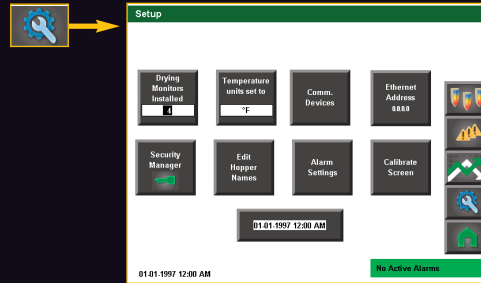


# DM3-i Setup

Most of the setup needed to operate the DM3-i is accessed from the Setup screen.

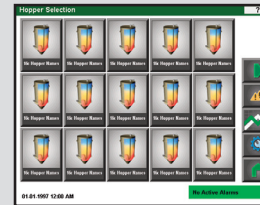
**Press the Setup button to view the Setup screen.**

From this screen: you will set the number of Drying Monitors Installed (hoppers in the DM3-i system); the Communications Devices; the Security Manager; the Alarm Settings; the date and time; units of measure (metric or English); the Ethernet address. You can also edit the names of the hoppers and calibrate the control screen.



## Drying Monitors Installed

- 1 Press the Drying Monitors Installed button.
- 2 Set the number of hoppers in the DM3-i system. The number you select determines the number of hoppers shown on all future screens.
- 3 Return to the Setup screen.



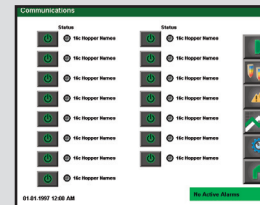
## Edit Hopper Names

- 1 Press the Edit Hopper Names button to access the Hopper Names screen.
  - 2 Press the highlighted text to change the names of hoppers to any word/number combination of up to 16 characters.
  - 3 Return to the Setup screen once all names have been changed.
- >>> **NOTE:** Hoppers that have been renamed will NOT be listed alphabetically or numerically by their new names, but will continue to be listed in numerical order by their ModBus identities.



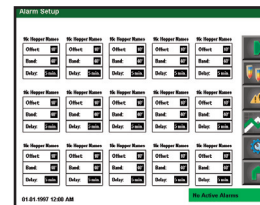
## Comm. Devices

- 1 Press the Comm. Devices button to access the Communications screen.
  - 2 Press the On button associated with each hopper that you would like to be online. The button will illuminate, and then the green LED light will illuminate indicating that communications to that hopper are active.
  - 3 Return to the Setup screen once all your desired hoppers are on-line.
- >>> **NOTE:** If connected hoppers do not communicate, turn off the DM3-i monitor and check to see if all cables are properly connected, that ModBus identities have been properly set, and that the final RTD junction box has been properly terminated using the jumper provided. See the DM3-i User Guide Installation section: *Creating ModBus addresses for Each RTD Junction Box*, and Installation section: *Terminating the Final RTD Junction Box*.



## Alarm Settings

- 1 Press the Alarm Settings button to access the Alarm Setup screen.
  - 2 Adjust the Offset, Band, and Delay as necessary for each hopper. These values act as default levels of temperature performance. If the temperature reported on the alarm location falls below these levels for longer than the adjustable time range, the DM3-i will alarm that the material is not being properly dried. The alarm setpoint relationship with the process setpoint (referred to as "Band") as well as the time range before alarm notification can be set on this setup screen for each hopper. Once hopper settings are made, only the Process Temp is required to align the DM3-i functions with a particular drying application.
  - 3 Return to the Setup screen once all settings have been established.
- >>> **NOTE:** Remember to later enable the alarm on each individual hopper screen that you are using. See the DM3-i User Guide Operation section: *Navigating the DM3-i Monitor - Individual Hopper Screens*.



# Operation & Setup

Quick Card

CCD015-0513

# DM3-i Drying Monitor

Software Version 1.01

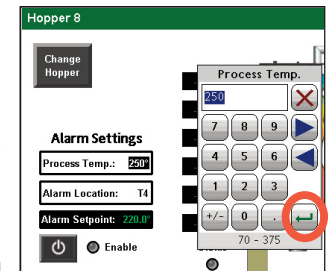


## Drying Hopper Material Change

### Changing the process temperature

- 1 Press the Hopper Selection button.
- 2 Press the individual hopper that needs to be changed.
- 3 Press the box labeled "Process Temp."
- 4 Enter the setpoint drying temperature on the keypad.
- 5 Press the Enter button to lock in the value.
- 6 Return to the main screen.

Process Temp.: 140°



>>> **NOTE:** The allowable setpoint range is displayed in the bottom of the pop-up keypad.

**WARNING:** This card provides only basic troubleshooting and maintenance information. Users must be familiar with all safety information and procedures described in the DM3-i User Guide.



Corporate Office: 724.584.5500  
 Instant Access 24/7 (Parts and Service): 800.458.1960  
 International: 814.437.6861 • www.conairgroup.com

# The DM3-i control panel

## Screen name

Indicates what screen you are currently viewing.

## Change Image button

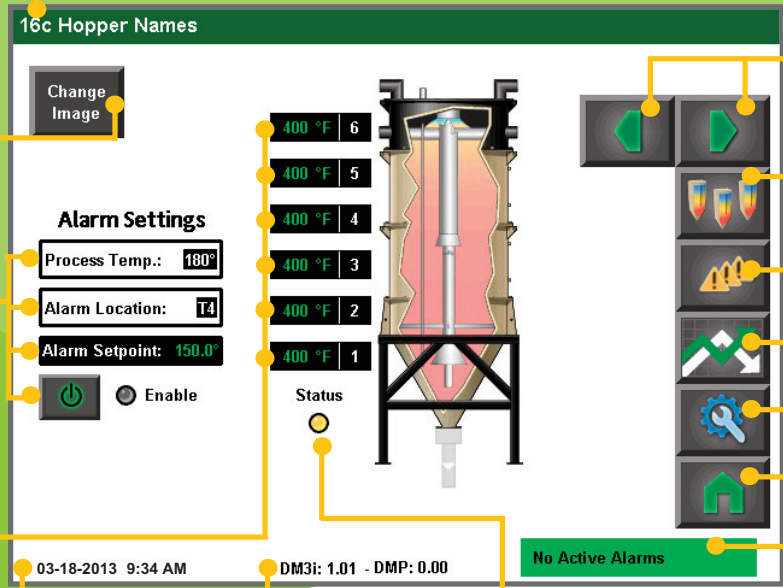
Used to change the hopper image to more accurately depict the actual hopper being monitored.

## Alarm Settings

Set the process temperature, the zone for the alarm location, display the setpoint for the alarm, and enable or disable the alarm functions.

## RTD Probe temperature sensor zones

Displays the current temperature in each zone.



## Date and Time

Displays the current date and time.

## Version

Displays the version of software and hardware currently in use.

## Status

Reflects current alarm status. Gray: temperature not yet within band. Green: enabled. Yellow: temperature has fallen out of range for a period less than the delay setting. Red: temperature has been out of range beyond the delay time setting.

## Previous/Next buttons

Go to the previous or next (hopper, screen, list, trend, item).

## Hopper selection button

Go to the Hopper Selection area.

## Alarm log button

Go to the Alarm log.

## Trending button

Go to the Trending area.

## Setup button

Go to the Setup area.

## Home button

Return to the Home screen.

## Alarms

Shows an alarm status.

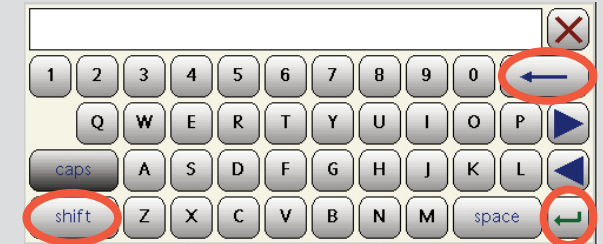
# Using the keypad

When using the controller, at times you are prompted to input numbers or words. When a number pad or keypad opens, you can make your inputs. Note that the entry will not be accepted until you press the green enter arrow. On the keypad, use the shift button to access other symbols available for use. Use the blue delete arrow to delete selections.



NOTE: The accepted range for input is shown at the bottom of the pop-up window.

Always confirm your input with the green enter arrow.



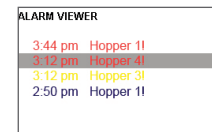
# Handling Alarms

The DM3-i monitors each hopper and will give you an alarm if the temperature falls below your established alarm setpoint in the alarm location of any hopper. The alarm will display at the bottom of the screen. See the DM3-i User Guide Operation section: Setting Up your DM3-i: The Basics-Alarm Setpoint for more information about setting the alarm setpoint.

1 Press the Alarm Log button. The control will display the alarm log. The alarm log displays all active alarms, all accepted active alarms, and all cleared alarms. Active alarms that have not yet been accepted will appear in red text. Accepted alarms that are still active will appear in yellow text. Alarms that are in the log, but have been cleared and no longer active will appear in blue text.



2 Touch on any alarm on the list to select that alarm. The alarm you have touched will be highlighted.



3 To accept the alarm, press "Accept".



4 To select a different alarm, you can touch the alarm in the list, or use the "Previous" and "Next" buttons to move through the list of alarms.



NOTE: Pressing the Accept All Alarms button will accept all alarms on the list.



# Explanation of additional screen icons

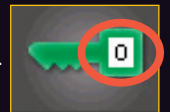
## Scroll

Press the right/left arrows to scroll forward and back. This is used for moving from one hopper to the next.



## Operating Level

The operating level is shown inside the Login key button. The operating levels are 0, 1, 2, 3, 4, 5, and 6.



## Help

On the top bar of some screens you will see the Help box. Clicking this box gives you more information about the functions of buttons on the screen.



## Power

Press the power button to turn an item on or off.



**WARNING:** This card provides only basic troubleshooting and maintenance information. Users MUST be familiar with all safety information and procedures described in the DM3-i User Guide.