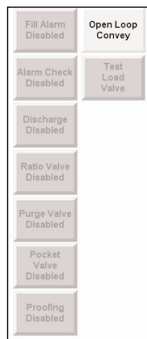


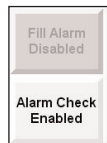
The ILS: Adding a Loader (continued)

WARNING: This card provides only basic operational information. Users must be familiar with all safety information and procedures described in the ILS CompactLogix, Versaview User Guide (UGC021-0106).

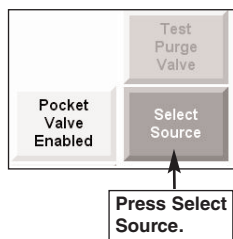
16 Select the desired configuration options from the list that appears on the screen.



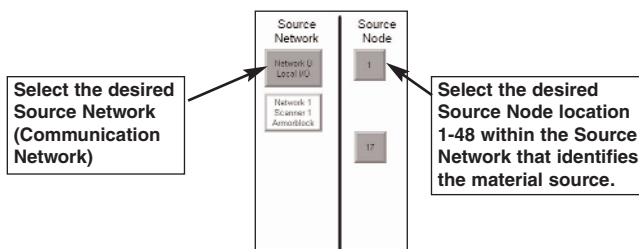
In this example, the Alarm Check was enabled.



In this example, Pocket Valve was enabled. NOTE: When selecting Pocket Valve or Test Purge Valve, you must press the Select Source button to enable the valid source.



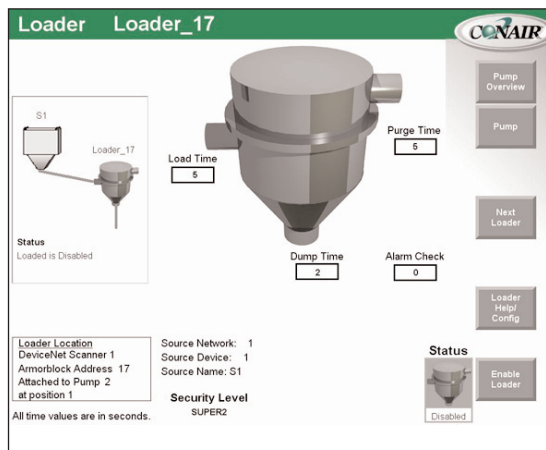
17 Once the Select Source button is pressed. You will select the Source Network and then the Source Node. NOTE: Only valid sources are shown.



18 Press  (Return to Loader Config).

19 Press  (Return to Loader).

20 Enter the appropriate time in seconds for the load, purge, dump and any other optional cycle times.



21 Return to the Main screen and logout.

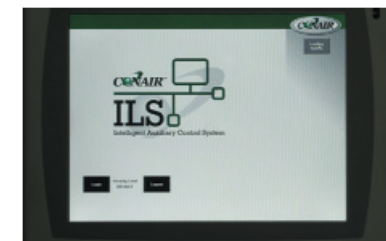


QUICK CARD

QCC010-0106

Corporate Office: 412.312.6000
Instant Access 24/7 (Parts and Service): 800.458.1960
Parts and Service: 814.437.6861


Integrated Loading System (ILS) Adding a Loader



Operation To add a Loader

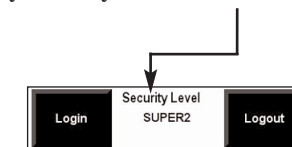
1 Turn on main power. Log in with the “supervisor” level password.



2 Enter both the User and Password, then press  (Enter).



3 Verify Security Level is “SUPER2”.

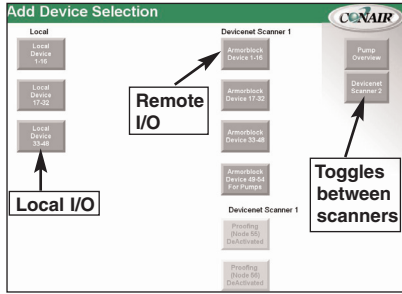


4 Press  (Loading System).

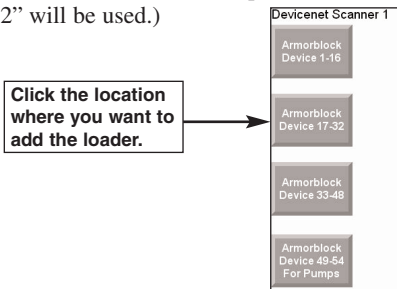
The ILS: Adding a Loader (continued)

5 Press **Add Device Menu** (Add Device Menu) from the Pump Overview screen.

NOTE: The “Add Device Selection” screen shows the configuration of the local rack and the remote I/O in groups of sixteen. Depending upon the number of scanners attached to the system, you may see fewer or more buttons.

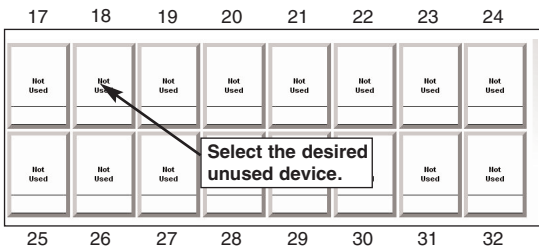


6 Select the location where you would like the Loader to be added. (In this example “Armorblock Device 17-32” will be used.)

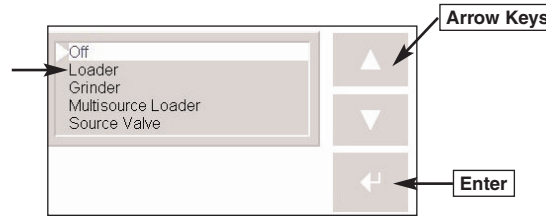


7 Select the desired unused device from the “Add Device” screen.

IMPORTANT: The numbers for the devices run in sequential order from left to right, starting at the first position on the top row continuing through the top row and moving to the bottom row. The screenshot below shows you an example of how the numbers are associated with the positions. You cannot arbitrarily assign a number to a position.

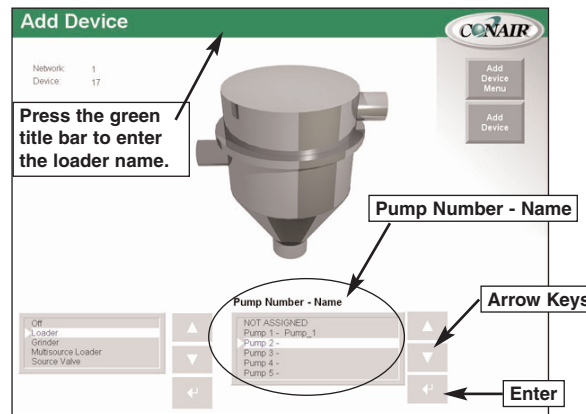


8 Using the **↑** arrows, select “Loader” and then press **↵** (Enter). The Loader will be displayed on the screen



9 Press the “Green Title Bar.” A pop up will appear to enter the name of the loader. Using the **↑** arrows, select the pump number/name then press **↵** (Enter).

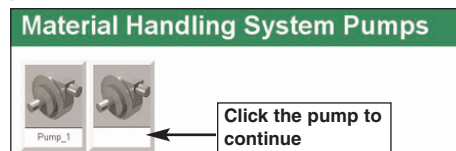
NOTE: A pump name may not exist if this is the first time using the pump.



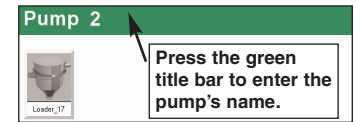
10 Press **Add Device Menu** (Add Device Menu) to exit the screen.

11 Press **Pump Overview** (Pump Overview).

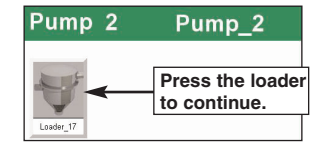
12 Press the Pump the loader is attached to. Note: In this example, the pump is new so a name has not been assigned. If an existing pump is being used and the name has already been assigned, skip to 14.



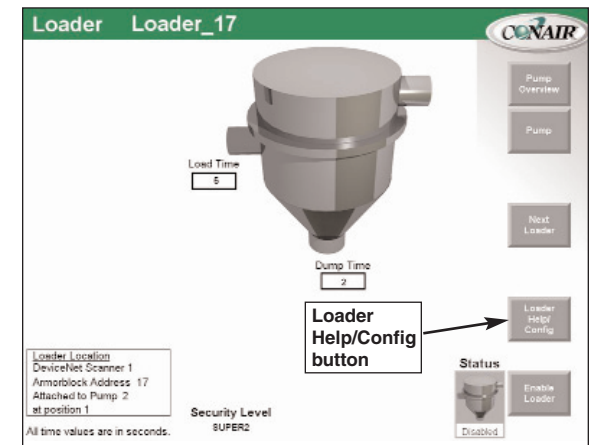
13 Press the “Green Title Bar.” A pop up will appear to enter the name of the pump.



14 Press the loader that was just added to continue the configuration. To configure Loader options, go to step 16. If no configuration is needed, proceed to step 23.



15 Press **Loader Help/Config** (Loader Help/Config). This will configure the Loader.



WARNING: This card provides only basic operational information. Users must be familiar with all safety information and procedures described in the ILS CompactLogix, Versaview User Guide (UGC021-0106). Refer to section 4, Loader Screen of the User Guide for a complete listing of options and descriptions.