

Augers for MicroConomix and MicroGravicon

Part Number	OD	Finish	Pitch	Length
61103912	3/8"	Polished	3/8"	13"
61103913	3/8"	Glass Bead Shot	3/8"	13"
61103901	1/2"	Polished	1/2"	13"
61103906	1/2"	Glass Bead Shot	1/2"	13"
61103902	3/4"	Polished	3/4"	13"
61103907	3/4"	Glass Bead Shot	3/4"	13"
61103903	1"	Polished	1"	13"
61103908	1"	Glass Bead Shot	1"	13"
61103904	1-1/2"	Polished	1-1/2"	13"
61103909	1-1/2"	Glass Bead Shot	1-1/2"	13"
61103915	1-3/4"	Polished	1-3/4"	13"
61103916	1-3/4"	Glass Bead Shot	1-3/4"	13"
61103905	2"	Polished	2"	13"
61103910	2"	Glass Bead Shot	2"	13"
61103911	2"	Glass Bead Shot	3"	13"
61103914	2"	Glass Bead Shot	2-1/2"	13"



611039xx

Note: Polished = Powder
Glass Bead = Pellets

For sizing sleeves = 1/8" clearance for powder
3/8" clearance for pellets

Augers Sleeves for MicroConomix and MicroGravicon



613028xx

Part Number	ID	Length	OD
61302810	1/2"	3"	2-1/2"
61302801	5/8"	3"	2-1/2"
61302809	3/4"	3"	2-1/2"
61302802	7/8"	3"	2-1/2"
61302803	1-1/8"	3"	2-1/2"
61302804	1-3/8"	3"	2-1/2"
61302805	1-5/8"	3"	2-1/2"
61302806	1-7/8"	3"	2-1/2"
61302807	2-1/8"	3"	2-1/2"
61302808	2-3/8"	3"	2-1/2"

Note: For sizing sleeves = 1/8" clearance for powder
3/8" clearance for pellets

Augers for Conomix and Gravicon

(Replaces 611038xx - see note below)

Part Number	OD	Finish	Pitch	Length
61106015	3/8"	Polished	3/8"	15-9/16"
61106016	3/8"	Glass Bead Shot	3/8"	15-9/16"
61106001	1/2"	Polished	1/2"	15-9/16"
61106008	1/2"	Glass Bead Shot	1/2"	15-9/16"
61106002	3/4"	Polished	3/4"	15-9/16"
61106009	3/4"	Glass Bead Shot	3/4"	15-9/16"
61106003	1"	Polished	1"	15-9/16"
61106010	1"	Glass Bead Shot	1"	15-9/16"
61106004	1-1/2"	Polished	1-1/2"	15-9/16"
61106011	1-1/2"	Glass Bead Shot	1-1/2"	15-9/16"
61106005	2"	Polished	2"	15-9/16"
61106012	2"	Glass Bead Shot	2"	15-9/16"
61106006	2-1/2"	Polished	2-1/2"	15-9/16"
61106013	2-1/2"	Glass Bead Shot	2-1/2"	15-9/16"
61106007	3"	Polished	3-1/2"	15-9/16"
61106014	3"	Glass Bead Shot	3-1/2"	15-9/16"



611060xx

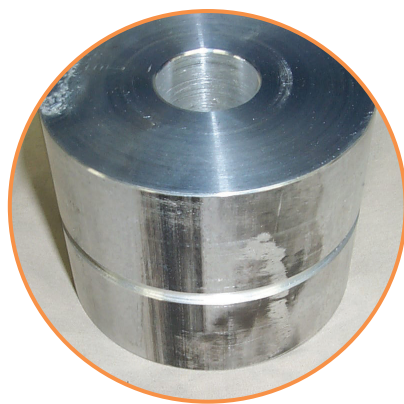
Note: For conversion to new auger use 611060xx (must include auger size), 29922006 bearing and 613127 drive coupling.

Polished = Powder

For sizing sleeves = 1/8" clearance for powder

Glass Bead = Pellets

3/8" clearance for pellets



613012xx

Note: For sizing sleeves =
1/8" clearance for powder
3/8" clearance for pellets

Augers Sleeves for Conomix and Gravicon

Part Number	ID	Length	OD
61301213	1/2"	3"	3-3/4"
61301212	5/8"	3"	3-3/4"
61301214	3/4"	3"	3-3/4"
61301201	7/8"	3"	3-3/4"
61301202	1-1/8"	3"	3-3/4"
61301203	1-3/8"	3"	3-3/4"
61301204	1-5/8"	3"	3-3/4"
61301205	1-7/8"	3"	3-3/4"
61301206	2-1/8"	3"	3-3/4"
61301207	2-3/8"	3"	3-3/4"
61301208	2-5/8"	3"	3-3/4"
61301209	2-7/8"	3"	3-3/4"
61301210	3-1/8"	3"	3-3/4"
61301211	3-3/8"	3"	3-3/4"

BFO/BFS Auger for Feeder Assemblies - Pellets only

(with Square Hoppers)

Part Number	OD	Pitch	Overall Length including Driven Coupling
10146204	3/8"	3/8"	9-31/32"
10146205	3/8"	1/4"	9-31/32"
10146203	1/2"	1/2"	9-31/32"
10146201	3/4"	3/4"	9-31/32"
10146202	1"	1"	9-31/32"

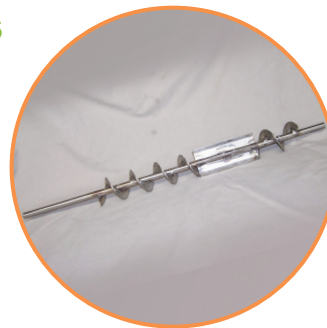


101462xx

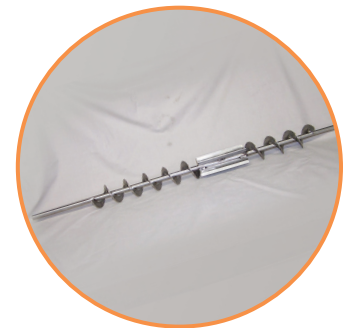
Note: All auger assemblies include a 3/8" larger sleeve except for 1".
For 1" augers the cast aluminum housing serves as a sleeve.

Augers for 3000 / 5000 Blenders

Part Number	Model	Length
60505003	3000 Blender	30-3/4"
605050	5000 Blender	38-3/4"



60505003

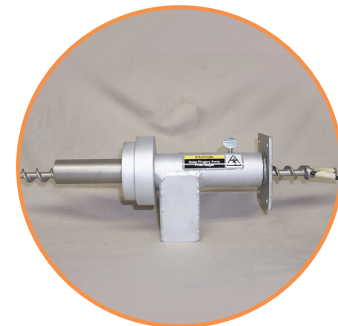


60505050

BF6/BFH Auger Assemblies

(with Round Hoppers)

Part Number	OD	Pitch	Length
10121810PH	1/2" Powder	1/2"	16-1/8"
10121809PH	1/2" Pellet	1/2"	16-1/8"
10121801PH	3/4" Powder	3/4"	16-1/8"
10121802PH	3/4" Pellet	3/4"	16-1/8"
10121803PH	1" Powder	1"	16-1/8"
10121804PH	1" Pellet	1"	16-1/8"
10121805PH	1-1/2" Powder	1-1/2"	16-1/8"
10121806PH	1-1/2" Pellet	1-1.2"	16-1/8"
10121807PH	2" Powder	2"	16-1/8"
10121808PH	2" Pellet	2"	16-1/8"



101218xx

Augers for Autocolors

(Auger only with round metal hoppers)

Part Number	OD	Pitch	Length
10523301	3/4"	3/4"	9-1/8"
10523302	1"	1"	9-1/8"
10523303	1-1/2"	1-1/2"	9-1/8"
10523304	2"	2"	9-1/8"

Augers kits for Autocolors

(Auger and Sleeves with round metal hoppers)

Part Number	OD	Pitch	Length
10114201PH	3/4"	3/4"	9-1/8"
10114203PH	1"	1"	9-1/8"
10114205PH	1-1/2"	1-1/2"	9-1/8"
10114207PH	2"	2"	9-1/8"

Augers for Central Conomix Takeaway Auger

Part Number	OD	Pitch	Length
29045601	4"	4"	23-1/2"

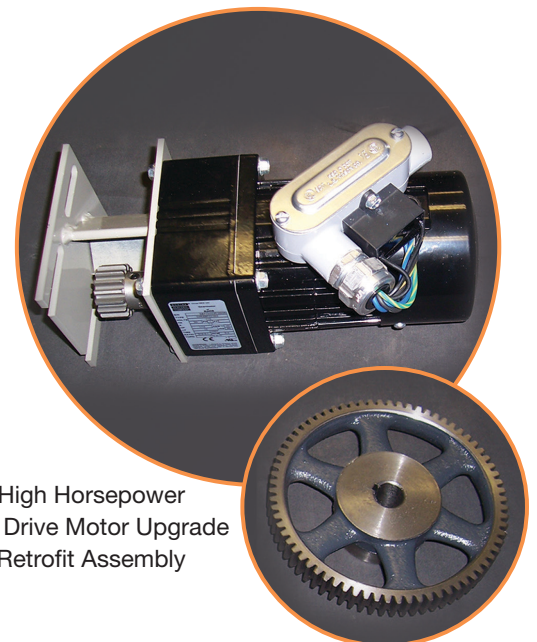
Augers for Central MicroConomix takeaway Auger

Part Number	OD	Pitch	Length
632001	2-1/2"	2-1/2"	14-3/8"

High Horsepower Bed Drive Motor Upgrade Retrofit Assembly

Part Number	Description
18928301	1/7 Hp motor (replaces the old 1/20 Hp), motor mount, small and large gears, miscellaneous hardware and wiring instructions.

Note: To be used on CD200 (with 4 desiccant tanks), CD300 and CD400 Dryers.



High Horsepower
Bed Drive Motor Upgrade
Retrofit Assembly

TrueFeed Augers

Part Number	Description	Use with which Motor	Length	When Metering Granular Injection Rates-grams/sec	When Metering Granular Extrusion Rates-lbs/sec
6134020001	HX	Standard DC Motor	Standard	0.007 - 0.04	0.06 - 2.8
6134020002	GLX	Standard DC Motor	Standard	0.01 - 1.0	0.1 - 8.9
6134020207	A8	Standard DC Motor	Standard	0.01 - 1.0	0.1 - 8.9
6134020003	GX	Standard DC Motor	Standard	0.1 - 5.0	1.1 - 28.0
6134020100	A15	Standard DC Motor	Standard	0.2 - 5.0	1.1 - 28.0
6134020004	A20	Standard DC Motor	Standard	0.4 - 14.0	2.8 - 112.0
6134020005	A20HT	High Torque Stepper Motor	Standard	0.4 - 14.0	2.8 - 112.0
6134020006	A30HT	High Torque Stepper Motor	Standard	1.4 - 35.0	11.1 - 230.0
6134020084	HXC	Standard DC Motor	Long	0.007 - 0.04	0.06 - 2.8
6134020085	GLXC	Standard DC Motor	Long	0.01 - 1.0	0.1 - 8.9
6134020208	A8C	Standard DC Motor	Long	0.01 - 1.0	0.1 - 8.9
6134020086	GXC	Standard DC Motor	Long	0.1 - 5.0	1.1 - 28.0
6134020104	A15C	Standard DC Motor	Long	0.2 - 5.0	1.1 - 28.0
6134020087	A20C	Standard DC Motor	Long	0.4 - 14.0	2.8 - 112.0
6134020088	A20HTC	High Torque Stepper Motor	Long	0.4 - 14.0	2.8 - 112.0
6134020089	A30HTC	High Torque Stepper Motor	Long	1.4 - 35.0	11.1 - 230.0
6134020144	HXC/SF	Standard DC Motor	X-Long	0.007 - 0.04	0.06 - 2.8
6134020145	GLXC/SF	Standard DC Motor	X-Long	0.01 - 1.0	0.1 - 8.9
6134020209	A8C/SF	Standard DC Motor	X-Long	0.01 - 1.0	0.1 - 8.9
6134020146	GXC/SF	Standard DC Motor	X-Long	0.1 - 5.0	1.1 - 28.0
6134020147	A15C/SF	Standard DC Motor	X-Long	0.2 - 5.0	1.1 - 28.0
6134020148	A20C/SF	Standard DC Motor	X-Long	0.4 - 14.0	2.8 - 112.0
6134020149	A20HTC/SF	High Torque Stepper Motor	X-Long	0.4 - 14.0	2.8 - 112.0
6134020144	A30HT/SF	High Torque Stepper Motor	X-Long	1.4 - 35.0	11.1 - 230.0



6134020003



6134020004

TrueFeed Augers (continued)

Part Number	When Metering Pellets Injection Rates-grams/sec	When Metering Pellets Extrusion Rates-lbs/sec	When Metering Regrind Injection Rates-grams/sec	When Metering Regrind Extrusion Rates-lbs/sec
6134020001				
6134020002	0.01 - 1.0	0.1 - 8.9		
6134020207	0.01 - 1.0	0.1 - 8.9	0.01 - 1.0	0.1 - 8.9
6134020003	0.1 - 5.0	1.1 - 28.0		
6134020100	0.2 - 5.0	1.1 - 28.0	0.2 - 3.5	0.8 - 20.0
6134020004	0.4 - 14.0	2.8 - 112.0		
6134020005	0.4 - 14.0	2.8 - 112.0	0.4 - 10.0	2.0 - 80.0
6134020006	0.4 - 35.0	11.1 - 230.0	1.4 - 25.0	8.0 - 164.0
6134020084				
6134020085	0.01 - 1.0	0.1 - 8.9		
6134020208	0.01 - 1.0	0.1 - 8.9	0.01 - 1.0	0.1 - 8.9
6134020086	0.1 - 5.0	1.1 - 28.0		
6134020104	0.2 - 5.0	1.1 - 28.0	0.2 - 3.5	0.8 - 20.0
6134020087	0.4 - 14.0	2.8 - 112.0		
6134020088	0.4 - 14.0	2.8 - 112.0	0.4 - 10.0	2.0 - 80.0
6134020089	1.4 - 35.0	11.1 - 230.0	1.4 - 25.0	8.0 - 164.0
6134020144				
6134020145	0.01 - 1.0	0.1 - 8.9		
6134020209	0.01 - 1.0	0.1 - 8.9	0.01 - 1.0	0.1 - 8.9
6134020146	0.1 - 5.0	1.1 - 28.0		
6134020147	0.2 - 5.0	1.1 - 28.0	0.2 - 3.5	0.8 - 20.0
6134020148	0.4 - 14.0	2.8 - 112.0		
6134020149	0.4 - 14.0	2.8 - 112.0	0.4 - 10.0	2.0 - 80.0
6134020144	1.4 - 35.0	11.1 - 230.0	1.4 - 25.0	8.0 - 164.0