

Fairway Pendant Controls

BE 950 SW

Part Number	Description	Pendant Cables
128B900400*	BE 950 SW Controller	2 meter: KB15-3

* Does not include cable



Fairway Pendant Control

Picker Controls

EX Series

Part Number	Description
CNT-00009	PCE II D Control, EX Series Pickers, 60 through 450



Picker Control



FX Series Control

FX Series

Part Number	Description
PCRX-1	Main Control, FX Series Pickers, 60 through 550
PM-20HCE	Pendant only
PM-20-CAB	Pendant cable

Picker Controls (continued)

MX Series and UCR-150L

Part Number	Description	Pendant Cables
CNT-00051*	PCE IV Control, MX Series Pickers, 60 through 550	4 meter: KB25-1-25-4

* Does not include cable



MX Series and UCR-150L Control



MX Series, MXR Series and UCR 150 Control

MX Series, MXR Series and UCR 150

Part Number	Description	Pendant Cables
CD-EM1*	MX and MXR Pickers, UCR 150 Robot	4 meter: KB37-4

* Does not include cable

Blender Controls (Refurbished Units available)

Part Number	Description
6132180013	8 Pin, 4 Position, 120 Volt
6132180014	8 Pin, 12 Position, 120 Volt
6132180078	17 Pin, 4 Position, 120 Volt
6132180079	17 Pin, 12 Position, 120 Volt
6132180153	17 Pin, 12 Position (used with air actuated motor)
61109404	17 Pin, 4 Position, 220 Volt
61109405	220 Volt

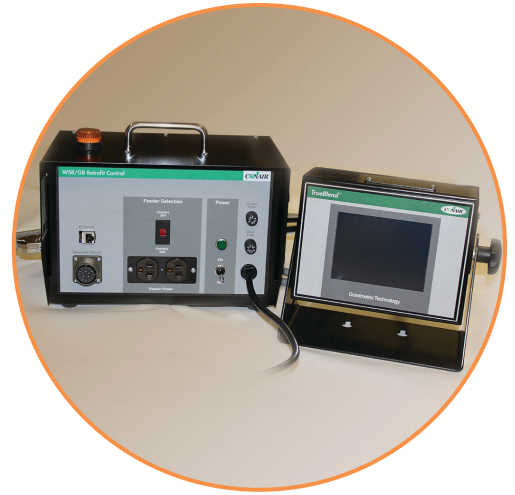


Blender Control

WSB/GB Retrofit Control

Part Number	Height	Width	Depth	Voltages
6142550103	8.5"	12.1"	8.1"	110V/1 phase/60 Hz 220V/1 phase/50 Hz

Note: Please refer to the Conair Equipment Catalog or the Conair website for additional information.



WSB/GB Retrofit Control

Feeder Controls

BFO/ BFS/ BF6/ BFH

Part Number	Description	Voltage
61422301	Injection Control	110 VAC
61422302	Injection Control	220 VAC
61422303	Injection Control	110 VAC / 24 VDC
61422304	Injection Control	220 VAC / 24 VDC
61422401	Extrusion Control	110 VAC
61422402	Extrusion Control	220 VAC
61422403	Extrusion Control with meter	110 VAC
61422404	Extrusion Control with meter	220 VAC



Feeder Control

Self-Contained Loader Controls

Part Number	Description
107536	Enhanced
10753601	Enhanced for Z Loaders
10753602	Standard
10171803	Universal Terminal Box
20609122	Fuse 3 Amp - For 10171803 Universal Terminal Box



Self-Contained Loader Control

Self-Contained Loader Controls (continued)

Part Number	Description
10760601	MLC6 Control, 120 Volt
10179201	Universal Terminal Box with Relay for use with Brush Style Motors
10179203	Universal Terminal Box without Relay for use with Brushless Style Motors
1074640302	10" Remote Extension Cable
1074640102	15" Remote Extension Cable
1074640502	20" Remote Extension Cable
10760901	Remote Mounting Plate
26674511	Fuse 0.5 Amp
26674519	Fuse 3.15 Amp
1076570101	ELCM - 115V
1076570102	ELCM - 230V
1076570301	Remote Pendant



Self-Contained Loader Control



Self-Contained Loader Controls

Part Number	Description
10760602	MLC6 Control; 240 Volt
10179202	Universal Terminal Box with Relay
1074640303	10' Remote Extension Cable
1074640103	15' Remote Extension Cable
1074640503	20' Remote Extension Cable
10760901	Remote Mounting Plate
26674511	Fuse 0.5 Amp
26674519	Fuse 3.15 Amp



Part Number	Description
1076200101	MLC2 Control, 120 Volt
1076200102	MLC2 Control, 220 Volt

Note: For use with Conair TLM Self Contained Integral Motor Tube Loaders.

Central Controls

Part Number	Description
10747703	Selectronic 4+ Control, 110 Volt
10171801	Universal Terminal Box
10735401	Power Supply Control for Vacuum Pump
1074640302	10' Remote Extension Cable
1074640102	15' Remote Extension Cable
1074640502	20' Remote Extension Cable
20609114	Fuse 0.5 Amp
20909119	Fuse 1 Amp
20609122	Fuse 3 Amp



10747703

Part Number	Description
10747701	Selectronic 5 Control, 24 Volt
10171802	Universal Terminal Box
10735601	Power Supply Control for Vacuum Pump
1074640301	10' Remote Extension Cable
1074640101	15' Remote Extension Cable
1074640501	20' Remote Extension Cable
20609114	Fuse 0.5 Amp
20909119	Fuse 1 Amp
20609122	Fuse 3 Amp



10747701

Part Number	Description
1074770401PH	Selectronic 6-120 Control, 120 Volt
10179203	Universal Terminal Box
1073540101	Power Supply Control for Vacuum Pump

Central Controls (continued)

Selectronic 6

Part Number	Description
1074640302	10' Remote Extension Cable
1074640102	15' Remote Extension Cable
1074640502	20' Remote Extension Cable
10760901	Remote Mounting Plate
26674511	Fuse 0.5 Amp
26674519	Fuse 3.15 Amp



Part Number	Description
1074770402PH	Selectronic 6-24 Control, 24 Volt AC
10179204	Universal Terminal Box
1074860101	Power Supply
1074640301	10' Remote Extension Cable
1074640101	15' Remote Extension Cable
1074640501	20' Remote Extension Cable
10760901	Remote Mounting Plate
26674511	Fuse 0.5 Amp
26674519	Fuse 3.15 Amp



Central Controls



Central Control

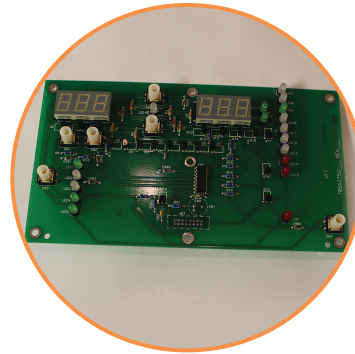
Part Number	Description
10762013	TLA Control

Note: For use with TLA Compressed Air Tube Loaders.

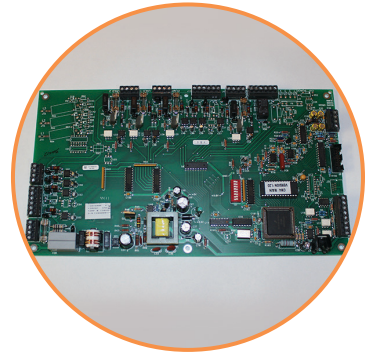
Heat Transfer Controls

For TW1 and TW2 Controls

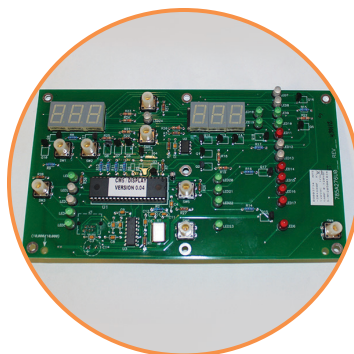
Part Number	Description
33405801PH	TW1 (includes sheet metal, operator board, and graphic)
09003732	Operator Board only
09003731	Motherboard Only (in base of unit)
09003735	Operator Panel Cable



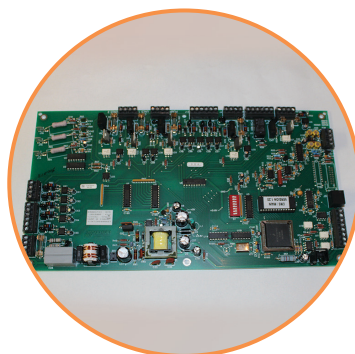
09003732



09003731



09003734



09003733

Part Number	Description
33405802PH	TW1 (includes sheet metal, operator board, handles, operator cable and graphic)
09003734	Operator Board Only
09003733	Motherboard Only (in base of unit)
09003737	15' Coiled Control Cable (standard)
02001186PH	30' Coiled Control Cable
02001187PH	50' Coiled Control Cable

Part Number	Description
20975301	TW Control with Alarm
20975302	TW Control with SPI



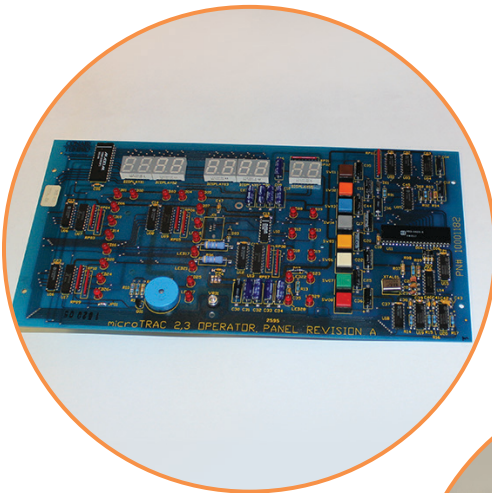
Heat Transfer Control

Heat Transfer Controls

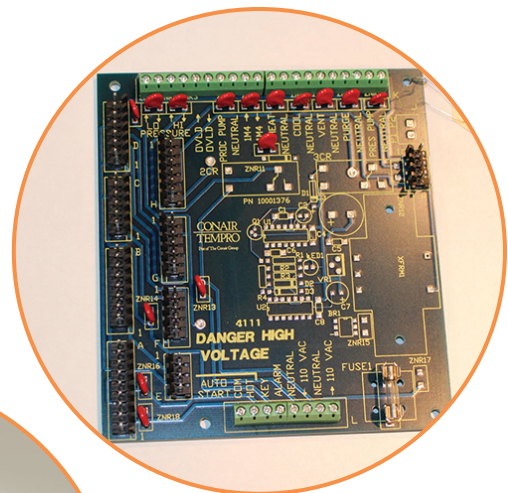
For MT2 and MT3 Controls

Part Number	Description
05000300PH	Micro Trac 2 - (4 colored buttons {square pattern}, includes sheet metal, operator board and graphic.)
09002779R	Operator Board Only
09002686	Motherboard Only (in base of unit)

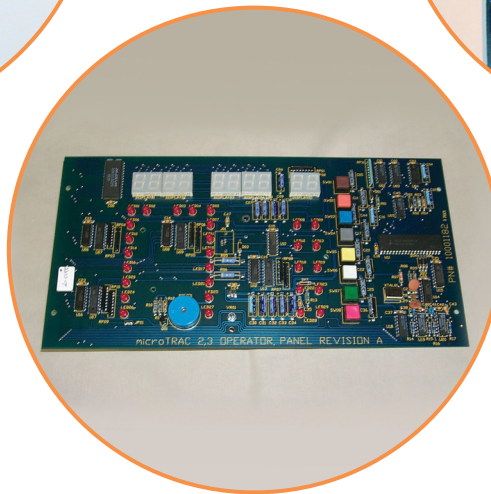
Part Number	Description
05000127	Micro Trac 3 - (8 colored buttons {in a row}, includes sheet metal, operator board, handles, operator cable and graphic.)
11000550R	Operator Board Only
11000561XT	Motherboard Only (in base of unit)
09002686	Universal Terminal Board



09002779R



09002686



11000550R