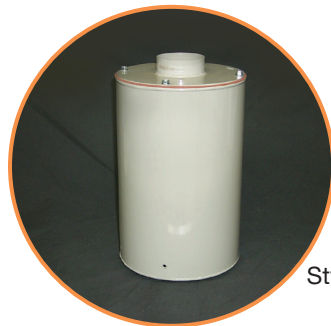


Desiccant Tanks

Part Number	Number of tanks required per dryer	Body Diameter	Top Port Diameter	Bottom Port Diameter	Overall Height included Top and Bottom Ports	Pounds of Desiccant used per tank	Style
18175804	3	3"	1"	1"	5.75"	1	B
18175803	3	3.5"	1.75"	1.75"	7.25"	1	B
18175802	3	5"	2.5"	2.5"	10.5"	1.5	B
18175801	3	6"	2.5"	2.5"	12"	7	B
18175401	3	8"	2.5"	2.5"	12.34"	8	B
181473	5	10"	3.5"	3.5"	32.5"	24	B
181173	1	8.125"	1.75"	3"	11.9"	4	C
181462	5 (D1600) 10 (D2400 / 3200)	13"	5"	5"	26"	41	B
18401801	5	10"	3.5"	3.5"	24"	19.3	B
18402801	5	10"	3.5"	3.5"	19"	14.5	B
18113602	4	8"	3"	3"	23.5"	11	B
181162	4	8"	3"	3"	14"	6	B
18402401	3	8.125"	2.5"	2.5"	12.062"	4.5	B
18182921	3	7"	2.5"	2.5"	10.8125"	4	F
18182920	3	7"	2.5"	2.5"	9.125"	3	F
1818290101	3	4"	2.5"	2.5"	8.625"	1	F
1818290102	3	5"	2.5"	2.5"	9.25"	2	F
181481	1	6.625"			5.75"	2.5	E
189098	1 (C50) 2 (C101)	8.125"	1.75"	1.75"	14.5"	5	C
18124702	1	12"	1.75"	6"	21"	18.5	A
181357	1	Not a cylindrical tank, dimensions are 10.5625" x 12.0625" x 2.5"				7	D



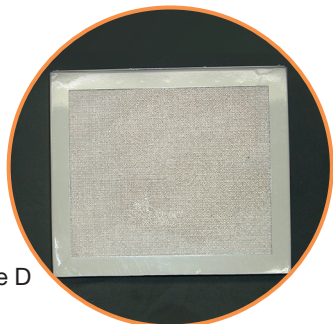
Style A



Style B



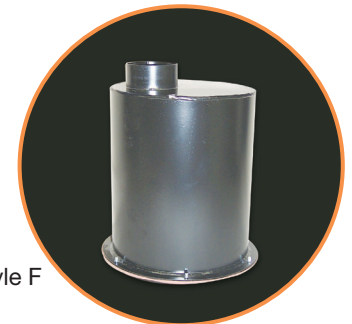
Style C



Style D



Style E



Style F