

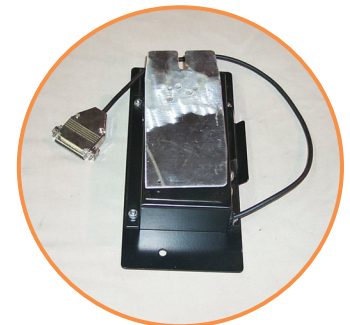
## Load Cell Assembly

### WSB / GB Blenders

Part Number	Description	Color Coded Identification Sticker	Style
61107001	3 kg Load Cell Assembly / 2 load cells wired to one plug - WSB - GB200 Blender.	Yellow	A
61107002	10 kg Load Cell Assembly / 2 load cells wired to one plug - WSB-GB-GD-GT400 Blenders.	Green	A
61107003	10 kg Load Cell Assembly / 2 load cells wired to one plug - WSB-GB-GD900 Blenders.	Blue	A
61107004	3 kg Load Cell Assembly / 1 load cell - one plug - WSB - GB100 Blender - good on models built up to 12/99.	Orange	B
61107005	20 kg Load Cell Assembly / 2 load cells wired to one plug - WSB - GB-GT1800 Blender.	White	A
61107007	3 kg Load Cell Assembly / 1 load cell / new mounting bracket - WSB - GB100 Blender - used on models built 2000 to current.	Orange	B
6132180176	3 kg Load Cell Assembly / 1 load cell - one plug - WSB - GBM Micro Blender.	Red	B



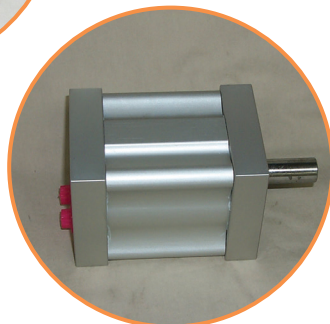
Style A



Style B



Style A



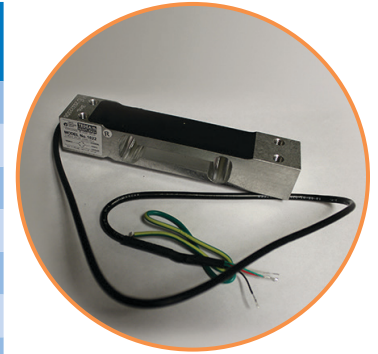
Style B

## Blender Mixer Motors

Part Number	Model	Description	Style
6132180109	GBM	NCR-S50	B
6132180055	GB100	45 RPM, 1/15 Hp	A
6132180112	GB140	Air Motor	B
6132180020	GB200	60 RPM, 1/6 Hp	A
6132180037	GB400	37 RPM, 1/6 Hp	A
6132180050	GB900/1800	22 RPM, 220 Volt, 1/2 Hp	A
6132180051	GB900/1800	22 RPM, 110 Volt, 1/2 Hp	A

**TrueBlend / TrueWeigh**

Part Number	Description	Kg	High Temperature
20956509	1022F3KG TB45 / 100	3	To 250° F
20956510	1022F10KG TB250 / 500 / 900	10	To 250° F
20956512	1022-0030-1000 with 3 m of wire TB1800 / 2500	30	To 250° F
20956513	1022-0050-2000 with 3 m of wire TB3500	50	To 250° F
20956514	D9120010 with 10 of 4 conductor wire TBH250 / 500 / 900	10	To 400° F
20956519	D912003 with 10 of 4 conductor wire TBH45 / 100	3	To 400° F
20956520	1042-0015-1004R with 3 m of wire TWB50 / TWB07 / TWH05	15	To 250° F
20956521	1042-0075-1003R with 3 m of wire TWB30 / TWB07 / TWH27	75	To 250° F
20956522	1042-0100-1004R with 3 m of wire TWB30 / TWH44	100	To 250° F
20956523	D9132115 with 10 of 4 conductor wire TWB30 / TWB07 / TWH05	15	To 400° F
20956524	D9132175 with 10 of 4 conductor wire TWB3 / TWB07 / TWH27	75	To 400° F
20956525	D91321150 with 10 of 4 conductor wire TWB30 / TWH44	100	To 400° F
20956526	1042-0030-1004R with 3 m of wire TWB07 / TWB30	30	To 250° F
20956527	1042-0050-1004R with 3 m of wire TWB07 / TWB30	50	To 250° F
20956528	1042-0150-1004R with 3 m of wire TWB30	150	To 250° F
20956529	D9132130 with 10 of 4 conductor wire TWB07 / TWB30	30	To 400° F
20956530	D9132150 with 10 of 4 conductor wire TWB07 / TWB30	50	To 400° F
20956531	D91321150 with 10 of 4 conductor wire TWB30	150	To 400° F
20956532	D9120030 with 10 of 4 conductor wire TBH1800 / 2500	30	To 400° F
20956533	D9120050 with 10 of 4 conductor wire TBH3500	50	To 400° F
20956534	1022F5KG TBH45	5	To 250° F
20956535	912005KG TBH100	5	To 400° F



20956509

**TrueFeed**

Part Number	Description
6134020059	Load Cell with Cable and Connectors WP02000



6134020059