



Model TB100-4
Shown with
optional Access
Receivers

ACCURATE GRAVIMETRIC BLENDING IN SMALL BATCHES

Get accurate blends, better mixing, faster material changes and increased profits with Conair's MedLine® TrueBlend Series Blenders. Steep-sided compartments allow resin to flow evenly through vertical dispense valves into the weigh chamber. Efficient mixing fully integrates all recipe ingredients. Enclosed cabinet design assures clean operation without pellet spillage.

MedLine blenders reduce downtime for cleaning out particulate with features such as quick access material compartment bins, a hinged chassis access door and removable components in the mixing chamber.

CLEAN THROUGHPUT UP TO 400 POUNDS AN HOUR

The MedLine® TrueBlend TB100 series blenders offer small extruders and medium tonnage injection molding machines a superior way to blend color and additives centrally or at the throat of the processing machine.

The blender dispenses up to four materials from respective material compartments into a common weigh chamber. The control determines the correct weight of each ingredient based on setpoints entered on the touch screen display. Up to 1000 recipes and 250 resin names can be entered and stored in the processor.

Unique fast-acting "no stick" vertical valves control the amount of material dispensed. All dispense valves use two-way air cylinders, to ensure positive operation.

Conair's MedLine blenders are designed to work in cleanroom environments with Conair's MedLine range of other medical grade solutions in extrusion, conveying, heat transfer, and drying.

■ Calibrated to ISO standards

The MedLine TB100 is calibrated to ISO standards, perfect for any cleanroom application.

■ Blend accuracy to 1/2 of 1%

Colorant and/or additive weights are held to within 0.5% of setting. A selectable Precision Additive™ feature is also available for additives. The microprocessor control automatically calibrates after every cycle and compensates for variations in dispense method, resin bulk density or particle geometry.

■ Easy-to-use control

Intuitive 5.7 inch LCD touch screen control with full color graphics allows quick and easy setup of blender setpoints. All setpoints are displayed simultaneously. Enter the percentages of the blend on the touch screen display and the blender does the rest. The system automatically weighs the recipe ingredients in the proper sequence and maintains the correct blend relationship. Any position can be identified as one of the four material type selections adding flexibility to your application setup.

■ Convenient, easy clean out

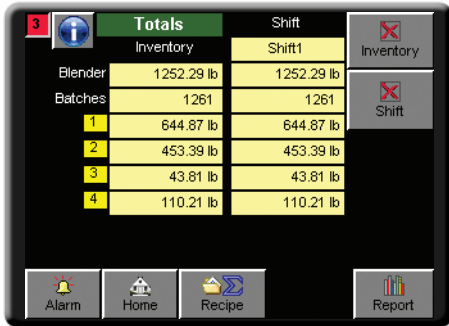
Easy access to all material contact points for fast and safe cleaning during color or resin changes. The blender features a built-in material shutoff valve below the mixing chamber, which can be replaced with the automatic flow control valve for remote and central blending applications.

TRUEBLEND™ TB100-4

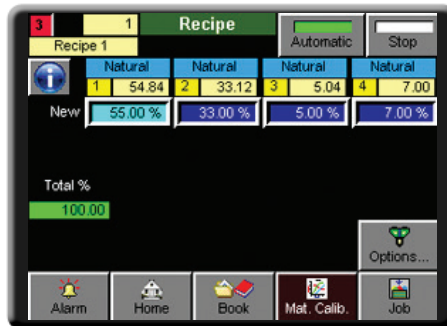
FEATURES

Intuitive, SB-2 touch screen control offers the industry's best multi-component accuracy

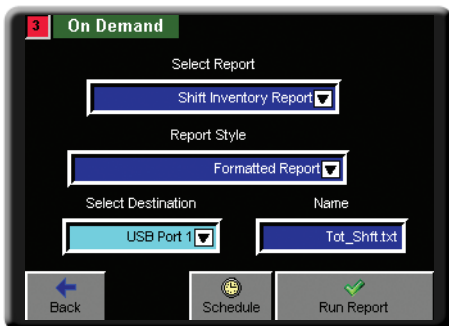
This easy-to-use touch screen control allows for fast setup of blender setpoints and automatically weighs recipe ingredients in the proper sequence to maintain correct blend relationship. Any position can be identified as one of the four material type selections adding flexibility to your application setup.



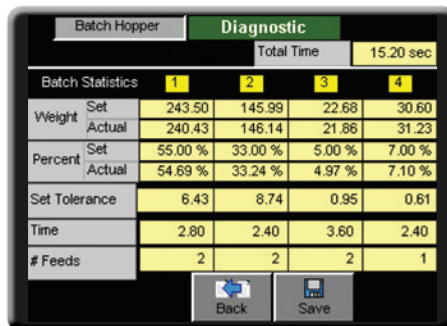
Instantly see your materials usage
Material usage / totals screen tracks the number of batches, weights dispensed by bin and weight dispensed in total since the last reset.



View and make changes to the active recipe
Save and recall up to 1000 recipes and 250 resin names in the Recipe Book.



Built-in reporting capabilities
Every SB-2 blender control is equipped with the capability to help users track their settings, alarms, material consumption, shift and inventory needs.



On-call diagnostics
Diagnostic screen displays target set point percentage and actual percentage dispensed. Also displays start and finish weights for each material per batch.

SmartBlend™ SB-2
Premium touch screen control offers these high performance functions to target the unique process needs of molders and extruders.

- Best choice for the needs of rapidly changing custom jobs or sophisticated extrusion and molding applications with complex and highly critical recipes.
- Progressively approaches each ingredient target. Never overshoots.
- Precision metering yields industry's best batch-to-batch accuracy.
- Precision ratio control - all components.
- Individual material accuracy settings.
- SMS or text message alarm notification capable.
- VNC viewer



| STANDARD PACKAGE - 4 Component | TS |
|---|----|
| FEATURES | |
| Material bin sight glasses and main bin clean out doors | ● |
| Touch screen control | ● |
| Loading control option | |
| Loader, pump and compressed air interconnection kit | |
| Material bin finger guards | ● |
| Quick clean/enhanced flow option* | |
| Machine mount with manual slide gate discharge† | ● |
| Remote/bin mount with pneumatic slide gate discharge† | ● |
| Calibration to ISO standards | ● |
| RAL 9003 paint | ● |
| Chemical resistant touch screen | ● |

FEATURE NOTES:
* Material bin door safety interlocks and drain ports.
† Choose between either machine or remote mounted blender packages.

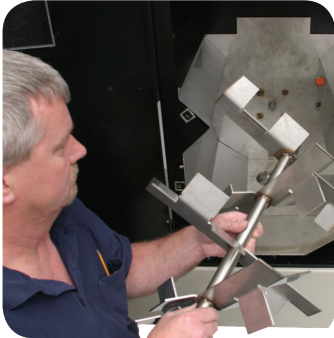
Specifications may change without notice. Consult with a Conair representative for the most current information.



TRUEBLEND™ TB100-4

FEATURES

Simple and quick cleanout



Clear away any particulate quickly with the MedLine TrueBlend's easy access to all material contact points. Material compartment access doors, removable weigh bin, mix agitator and mix chamber liner all allow quick, efficient cleaning.

Optional floor stand design



MedLine blenders install easily to this floor stand, which is equipped with a material reservoir.

Each blender stand features:

- Sturdy design
- Easy cleanout
- Fork-lift provisions
- Drawer magnet provision
- One standard material take-away tube (up to two additional material tubes are available as options)
- Available with one or two cubic foot reservoir capacities

OPTIONS



TB reports

Used to track and document material usage, alarms, batch and shift reports and recipes. See *TrueBlend Reporting Software and ControlWorks specification sheets*.



Material level alarm control

Eliminate costly material shortage problems and machine downtime with this early warning system. The control monitors up to six material levels at one blender. Individual switches can be adjusted to monitor high or low material levels. See *Level Alarm Control specification sheet*.



Drain chute

The material drain chute readily installs to the chassis opening of the blender for fast and simple cleanout.



Major component flow restrictor

Available with TB/TBA/TBH models 100, 250, 500 and 900 on bin positions one and/or two. (Generally used when feeding more than two minor ingredients.)



Minor component flow restrictor

Available with TB/TBA/TBH models 100, 250, 500 and 900 on bin positions three and/or four. (Generally used when feeding 1% or less of an ingredient.)

Stainless steel wetted surfaces



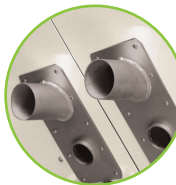
Air blow-off for mix chamber level sensor

This feature is integrated into the blender mix chamber to blow excessive dust and fines away from the sensing device and ensure accurate level sensor reading.



Remote mixer demand sensor

This sensor provides a fill-to level option in a surge bin or other material receptacle that sits below a remote mounted blender.



Dry air blanket

This option blankets the material compartments and mixing chamber with hot dry air to prevent moisture regain during processing. Available on both the TBA and TBH models. See *TBA and TBH specification sheets*.



TrueBlend high-heat models

Used to process high temperature plastics such as ABS, nylon, polycarbonate and PET resins. Available in medium temperature (160° - 250°F {71° - 121°C}) TBA models and high temperature (250° - 375°F {121° - 191°C}) TBH models. See *TBA and TBH specification sheets*.



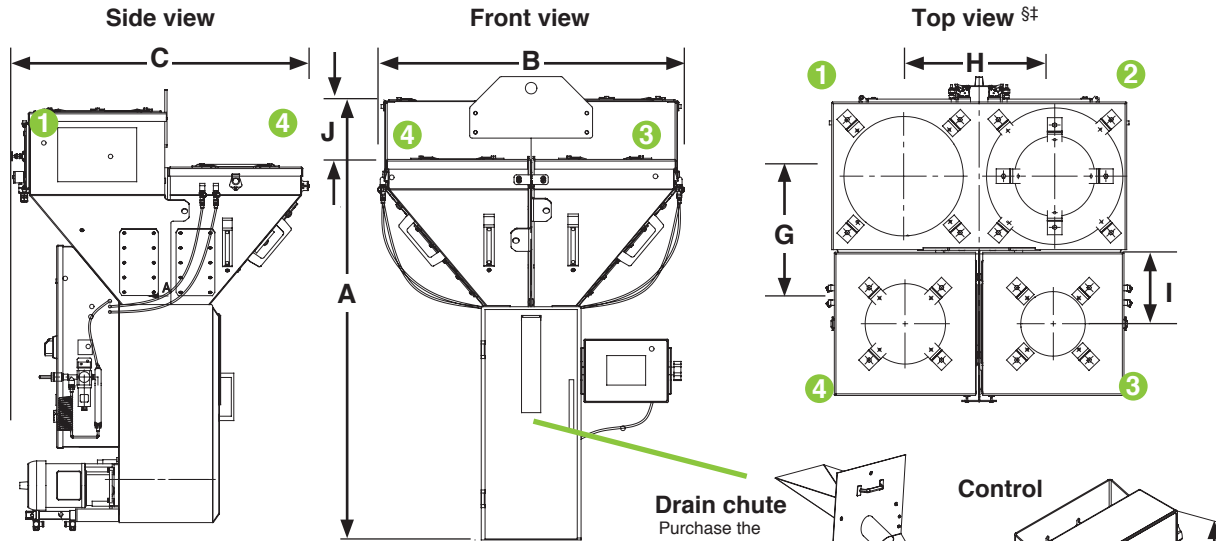
Remote HMI operator cable

This option is for the 6 meter cable in lieu of the standard 2 meter cable.



TRUEBLEND™ TB100-4

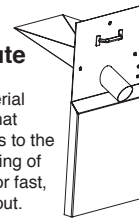
SPECIFICATIONS



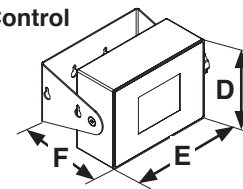
| MODELS | TB100-4 |
|---|--|
| Performance characteristics | |
| Batch size lb {g} | 2.2 {1000} |
| Maximum throughput rate lb/hr {kg/hr}* | 400 {181} |
| Bin capacity - main ingredient ft³ {liter} | 0.6 {17} |
| Bin capacity - minor ingredient ft³ {liter} | 0.3 {8} |
| Maximum number of materials | 4 |
| Number of vertical discharge valves | 4 |
| Number/(size) of major bin valves | 2 - (60 mm) |
| Number/(size) of minor bin valves | 2 - (20 mm) |
| Dimensions inches {mm} | |
| A - Height above mounting plate† | 45.25 {1149} |
| B - Hopper width and depth (square) | 30.25 {769} |
| C - Depth | 32.75 {832} |
| D - Control height | 6.50 {165.1} |
| E - Control width | 8.75 {222.3} |
| F - Control depth | 6.75 {171.5} |
| G - Loader center distance | 16.25 {412.8} |
| H - Loader center distance | 15.50 {393.7} |
| I - Loader center distance | 7.75 {196.9} |
| J - Hopper height differential | 6.00 {152.4} |
| Weight lbs {kg} | |
| Installed | 160 {72} |
| Shipping | 270 {122} |
| Voltage total amps | |
| 115V/1 phase/60 hz | 3.0 |
| 230V/1 phase/50 hz | 1.5 |
| Compressed air requirements | |
| Discharge valves | 90 psi @ 0.2 ft³/min {6 bars @ 0.09 liters/sec}; 1/4 in. NPT fitting |
| Maximum loader sizes | |
| 8 inch loaders | Number of loaders - 2 |
| 12 inch loaders | Number of loaders - 2 |

Drain chute

Purchase the optional material drain chute that readily installs to the chassis opening of the blender for fast, simple cleanout.

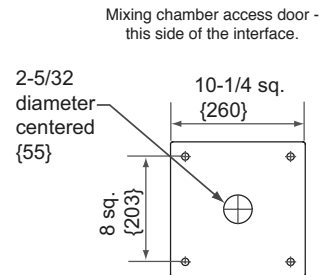


Control



MOUNTING INTERFACE

Dimensions shown in inches and (mm).



Mounting bolt hole size (4 holes) 7/16 inch (11.0 mm).
Predrilled 5 x 5 mounting pattern as standard.

SPECIFICATION NOTES

* Maximum throughput rates are based on 35 lb/ft³ pelletized material, using all standard valve sizes. Use of reducer inserts will lower the rate shown.

Throughput rates are based on a **4-position blender recipe** of 20% regrind, 80% natural, 3% color and 2% additive material.

† The optional flow control valve will mount inside the chassis in the space of the manual slide valve. Conair recommends using the optional flow control valve when mounting the blender on a stand, surge bin or hopper.

‡ Hopper positions three and four are supplied with eight inch cover plates as standard.

§ Numbers in top view drawings represent hopper positions.

Specifications can change without notice. Contact a Conair representative for the most current information.

