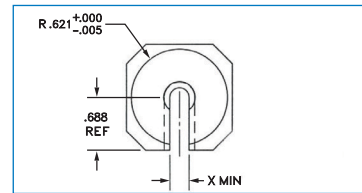


## Pinch Roll Parts

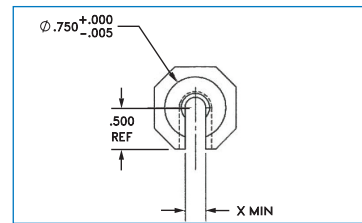
Type	Part Number	Description
Pinch Roll Bushing	MZ05-185-1320	3-6" W and 1-3" W
	MZ05-185-1321	2-4" W
Pinch Roll Rollers	A5002D008-1	3-6" W, STD Urethane Cover
	A5002D008-2	3-6" W, Solid Stainless Steel, FDA for Sticky materials
	A5002D008-3	3-6" W Solid Aluminum, Hard Anodized
	A5002D008-4	3-6" W FDA White Nitrial
Cutter Housing Conversion Kit	MZ8999-0267	3/4" to 1.5" for Bushing



MZ05-185-1320

-1=	.0625
-2=	.1250
-3=	.1875
-4=	.2500
-5=	.3125
-6=	.3750

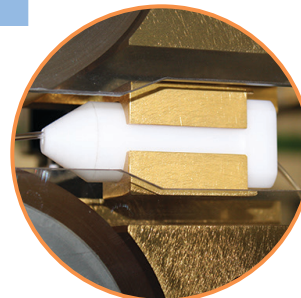
= X



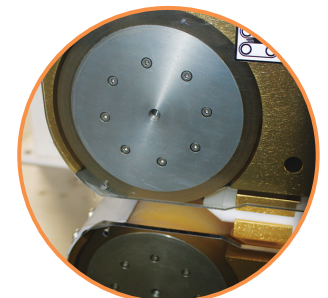
MZ05-185-1321

-1=	.0623
-2=	.125
-3=	.188
-4=	.250
-5=	.313
-6=	.375

= X



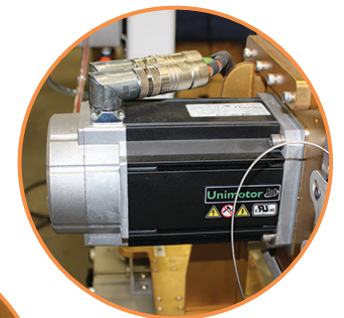
Pinch Roll Bushing



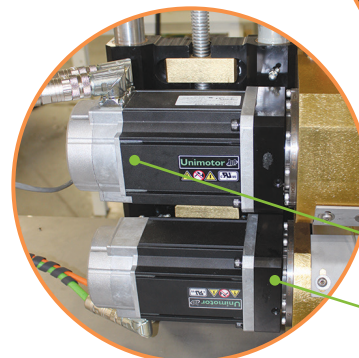
Pinch Roll Rollers

## MedLine Puller / Cutter Parts

Type	Part Number	Description
Servo Boom	MZ8277-0207	15:1, All MedLine models
	MZ8277-0215	Planetary Reducer 10:1
Servo Motor	MZ6050-0132	230 VAC, 8.31A, 3.24 Hp
	MZ6050-0129	460 VAC, 4.8A, 3.25 Hp
Puller Gearbox	MZ8277-0207	15:1, 1" x 12" Dual Drive
	MZ8277-0011	2:1, 2" x 12" Dual Drive
	MZ8281-0011	9:1, 2" x 12" Single Drive
	MZ8277-0006	4:1, 3" x 6" P.R.
	MZ8277-0004	2:1, 3" x 6" P.R.



Servo Cutter Motor



Servo Motor

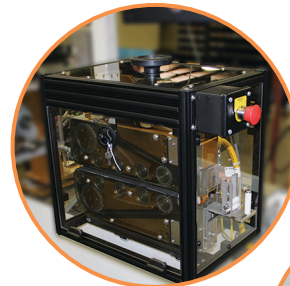
Gearbox

## MedLine Puller / Cutter Parts (continued)

Type	Part Number	Description
Enclosure for MedLine	26107010P01	1-12 Unit
- Safety Guarding	26202L010P01	2-12 Unit

**Note:** This kit requires hole drilling and fabrication for mounting.

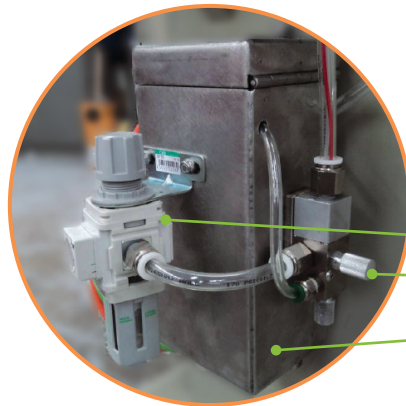
Encoder Kit	MZ6140-0060	Encoder, Incremental, 6000PPR
	1545-30096	Encoder Wheel, 1 foot
	71301810	Encoder Arm
	71301811	Encoder Bracket



MedLine Enclosure

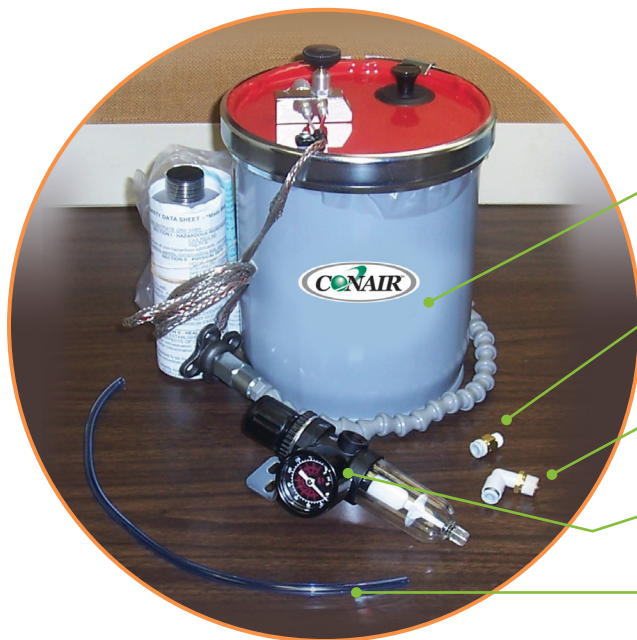


Encoder Kit



## MedLine Puller / Cutter Mister Canister Parts

Part Number	Description
71311847	Mister Parts Kit
71311846	Valve
24992L040P111	Tank



Part Number	Description
0235-30232	Master Mister
FTG-00115	Air Fitting Straight
FTG-00099	Air Fitting 90 degree
5551-00097	Air Regulator
24101604	Air Hose 1 ft