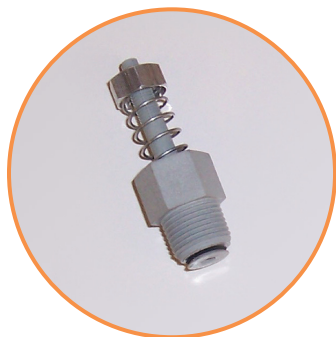
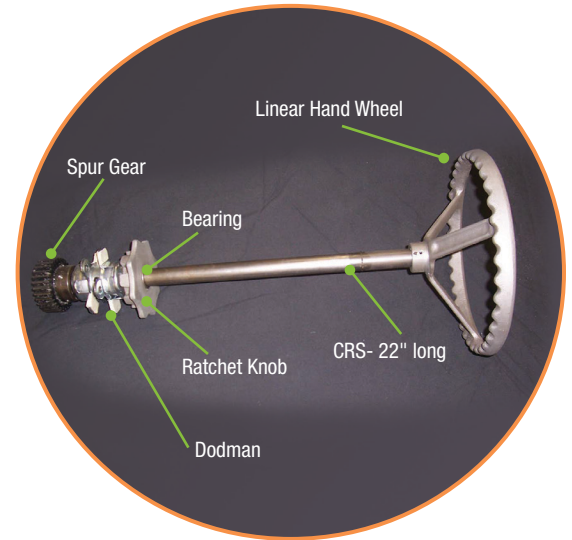


RH, LH Ratchet and Clutch Assembly

| Part Number | Description |
|---------------|---|
| 0303-08608 | RH Ratchet and Clutch Assembly - Bearing Data Faces Out |
| 0303-08616 | RH Ratchet and Clutch Assembly - Bearing Data Faces In |
| MARSPR-S1030 | Spur Gear |
| 0303-01549 | Linear Hand Wheel 11" |
| 3559-00034 | Bearing (only) 1" Diameter CRS-22" Long |
| 0303-01891 | Ratchet Knob |
| Dodman-035036 | Dodman |



315-167-2001



0303-10017

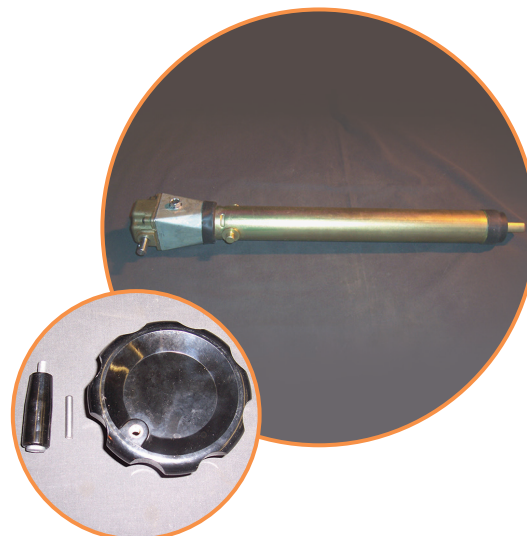
Vacuum Regulator and Vacuum Flow Control

| Part Number | Description |
|--------------|----------------------------|
| 315-167-2001 | Vacuum Regulator 3/8" |
| 0303-10017 | Vacuum Flow Control MF-150 |

Actuator — Manual Linear

| Part Number | Description |
|-------------|--------------------------|
| 3571-30052 | Actuator - Manual Linear |
| P10C | Plastic Handle |

Note: The plastic handle is the only item that can be purchased separately.



Plastic Handle P10C

Tank Limit Switches, Casters, Drain Covers and Wheel Shaft Locking Devices

| Part Number | Description |
|-------------|--|
| 3031820401 | Tank Drip Tray Drain Cover |
| MZ6140-0029 | Limit Switch, Lever Plunger |
| MZ8042-0240 | Caster Rigid, V-Groove Stainless Steel |
| MZ8370-0110 | HTMP & MPCB Large Wheel Shaft Locking Device |



3031820401



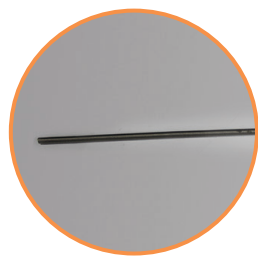
MZ6140-0029



MZ8042-0240



MZ8370-0110



9665K48



26705505503



Tank Pins & Springs

| Part Number | Description |
|---------------|---------------------------------|
| 9665K48 | Spring Extension, Length 20" |
| MZ8340-0105 | Pin, Clevis, 1/2" Diameter x 2" |
| MZ17-556-1303 | Drive Pin A |
| 23034L010P03 | Spring Ajax 64SP 7-3/4" OAL |
| 4542-30032 | Spring - S/S LC-045G-10 |
| 26705505503 | Swivel Screw Clamp, Large Foot |
| MZ8308-0122 | Compress Spring Fits 3/4" Hole |

Tank Handles

| Part Number | Description |
|-------------|--------------------------------------|
| MZ8145-0040 | Handle Grey Grip Dots |
| 26691301 | Handle, SS |
| MZ8146-0092 | Handwheel, 6.3 Diameter x 1/2" Bore |
| MZ8146-0010 | Handwheel, 3.94 Diameter x 3/8" Bore |



MZ8145-0040



26691301



MZ8146-0092

Tank Switches, Circuits and Other Parts

| Part Number | Description |
|-------------|---------------------|
| MZ6060-0042 | (230V) Power Supply |
| MZ6060-0039 | (460V) Power Supply |
| MZ6080-0054 | X FMR |



Note: Review electronic prints or contact Conair Parts Department before ordering.



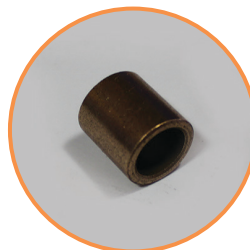
MZ6140-0014



MZ6120-0031



MZ15-25608-1428



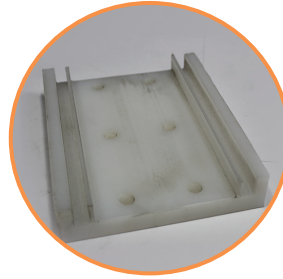
MZ8034-0109

Tank Miscellaneous Parts

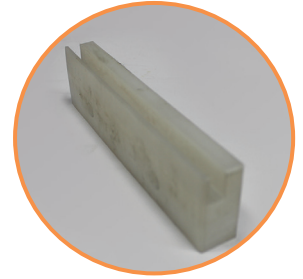
| Part Number | Description |
|-----------------|--|
| MZ6140-0014 | Proxy Inductive, 8 mm PNP, NO |
| MZ6120-0031 | C, J, 3/16" Diameter, 90 degree, 6" Length |
| MZ15-25608-1428 | Motor Rise Bar |
| MZ8034-0109 | BRG Plain, 1/2" ID x .68" OD x 3/4" Length |
| MZ23-25762-1354 | Guide Bushing |

Clamp Guide

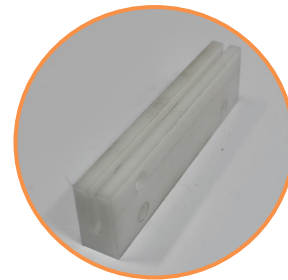
| Part Number | Description |
|-----------------|------------------------------|
| MZ19-25177-1355 | Clamp Guide |
| MZ193-665-1225 | Clamp Guide |
| 0302-32944 | Guide, Retractable Drain Pan |



MZ19-25177-1355



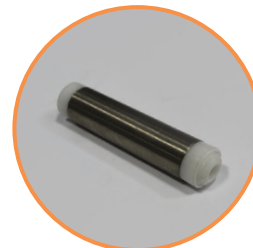
MZ193-665-1225



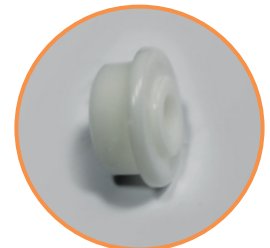
0302-32944

Conveyor Rollers

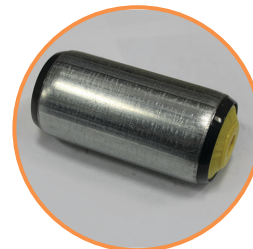
| Part Number | Description |
|----------------|---|
| MZ8294-0014 | Conveying Roller, 3/4 x 3, 1/2" Long |
| MZ8294-0035 | Conveying Roller, Bearing for 1" SCH 40 |
| MZ173-431-1264 | Conveyor Roller |
| MZ8294-0027 | R.L - 4.06", X00 - ZC38, RL |
| MZ21-406-1355 | Roller Shaft |



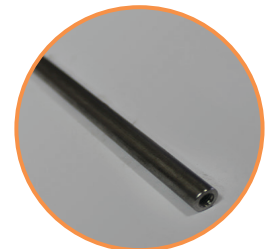
MZ8294-0014



MZ8294-0035



MZ8294-0027



MZ21-406-1355