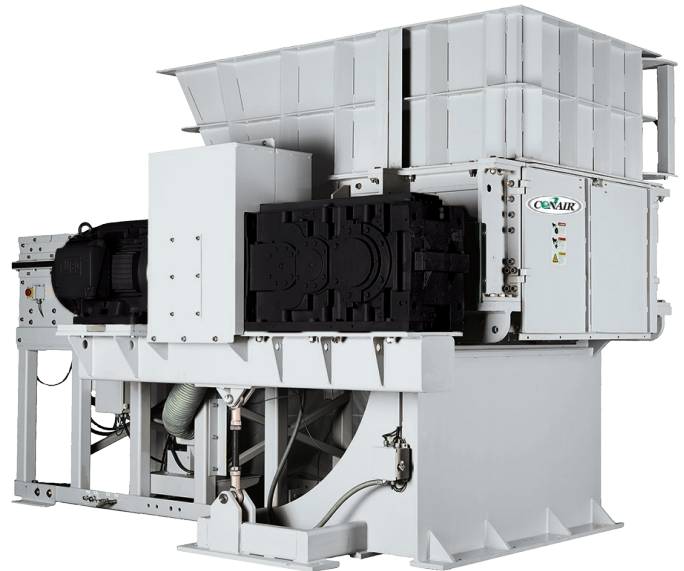


# High Volume Extra Duty Size Reduction

Large quantities of bulk plastic scrap are quickly size-reduced with the heavy-duty Ultra Series Shredders from Conair. Designed specifically for cutting through high volumes of plastic scrap, the Ultra Series readily accept loose scrap, bundles, and even gaylord quantities of plastic materials dumped into the reinforced surge hopper.

Controlled feeding is provided by an automatic hydraulic ram that pushes scrap into a rotating row of rugged knives bolted into machined pockets of the solid steel rotor. Once started, operation is fully automatic.



Ultra Model 2052

## Wide-Open, Sliding Access Simplifies Maintenance

The Ultra Series Shredders are the solution for processes that need to grind plastic in higher volumes than granulators can manage.

The dagger-cut knives offer four cutting edges that can be renewed by simply unbolting and indexing each four-edged knife to reveal a fresh cutting edge. Each knife slices against adjustable, notched bed knives for fast, efficient, primary size reduction.

Optional trapezoid "trap cut" blades may be selected for even tougher shredding applications.

Final particle size is created by forcing the flow of shredded material through a broad choice of reinforced screens. Screens are provided in holes sizes from a coarse 4 inch {102 mm} down to fine 3/8 inch {10 mm} diameter, minimizing the need for secondary granulation for some applications.

### ► Wide Open Access for walk-in service

A patented sliding, horizontal body separation allows easy access to knives, rotor, and all material contact surfaces for the easiest possible maintenance and cleaning.

### ► Long-life, high-impact rotor takes the abuse

The drop-forged, single-shaft, solid steel rotor is 4140 high alloy steel, heat treated for high tensile strength with a lifetime limited warranty. Oversized outboard pillow block bearings with split housings provide long life and easy shaft removal.

### ► Extra-long service from 4-way rotatable blades

Dagger-cut design penetrates and efficiently cuts through plastic scrap and can be easily rotated to employ a fresh tip.

### ► Self-protecting drive train

The over-torque limiting clutch assembly eliminates shredding resistance from being transferred to the gearbox, providing smoother operation and extended life of all drive train components.

### ► Controlled shredding that requires no monitoring

Automatic rotor and ram control is provided via a PLC control in a choice of touch screen interfaces. All models include an auto-reverse rotor shaft, to quickly and automatically recover from rotor jams.



## Features

- **Solid steel single-piece forged rotors** maximize durability and strength
- **Self-cleaning non-contaminating rotor** seals ensure bearings last significantly longer
- **Wide open chamber access** for fast, safe cleaning and maintenance
- **Oversized spherical bearings** limit drift and handle even heavy regrind
- **Auto-reverse rotor operation** quickly recovers in the event of jams
- **Straight-walled hopper** minimizes chance of materials bridging or compacting
- **Service access doors** (with removable rear compartment) provide easy access for maintenance
- **Indexable dagger cutting blades (4-way)** require little sharpening or maintenance to keep cutting efficient
- **Over-torque limiting clutch** provides automatic shutdown to prevent damage in the event of prolonged clutch slippage
- **11-inch-high {279 mm} ram feed** prevents jamming using a torque-controlled, over-sized 7.5 Hp {5.6 kW} dual pump hydraulic drive system
- **Heavy duty construction cutting chamber** maximizes dimensional stability to ensure precision, strength, and durability
- **Ultra-duty gear boxes** are directly coupled to regulate rotor speed

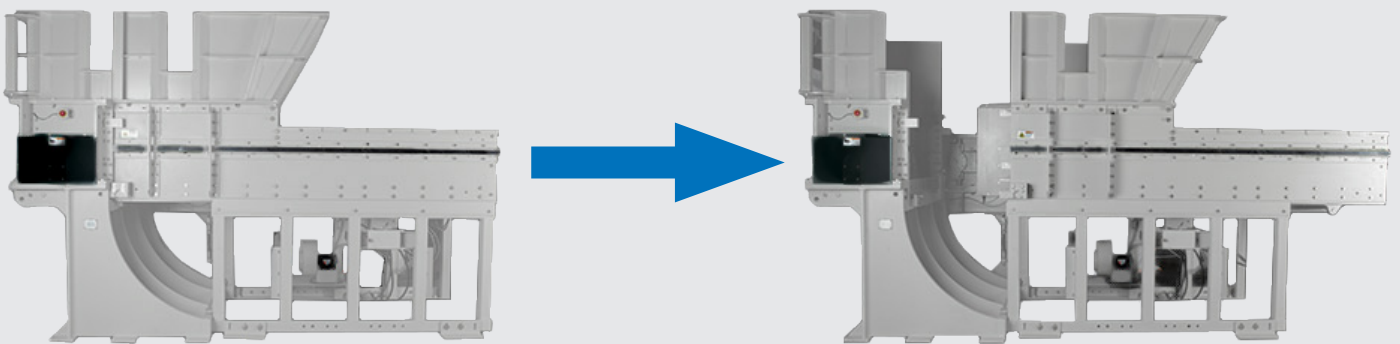
### Dagger-Cut Blades

The dagger-cut blade is used for granulating hard plastic with minimal strain to the blade or the rotor. Four cutting surfaces are available on each dagger-cut blade, indexable with only a wrench. Each blade holder is welded into the surface of the machined rotor surface for superior reinforcement.



### Wide Open Access

Each Ultra shredder model is supplied with Wide Open Access. With this feature, awkward top entry into the shredding zone is eliminated by splitting the hopper and exposing all cutting and ramming components to walk-in entry. Proper maintenance is encouraged, personnel safety is enhanced, and shredder cleaning has never been easier.

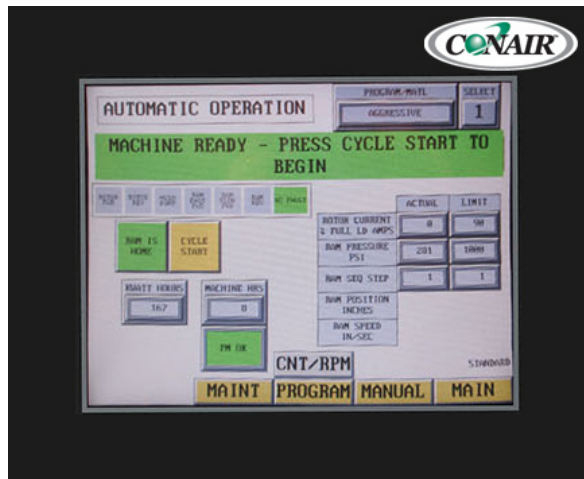
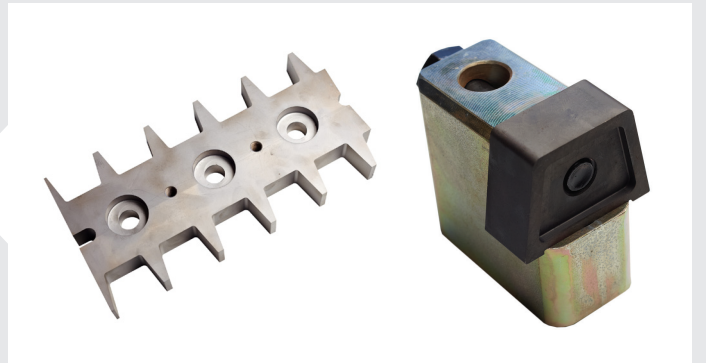


## Options

- **Take-away conveyors**
- **Elevating legs**
- **Custom feed hoppers**
- **Evacuation blower/vacuum system**
- **Interlocking controls** for both feed and take-away conveyors
- **Trap-cut knives**
- **Extra row of blades**
- **Bolt-in tool holders**
- **High-powered rotor motors** available from 50 to 300 Hp {37 to 224 kW}
- **Variety of screen hole sizes** available from 3/8 to 4 inches {10 to 102 mm}

### Trap-Cut Knives

The trapezoid-shaped Trap-Cut knives offer two cutting edges that are easily renewed by simply unbolting and rotating each knife to reveal a fresh cutting edge. Each blade holder is embedded and bolted below the surface of the machined rotor surface for superior reinforcement. Blade holders may be easily unbolted and replaced if ever required.



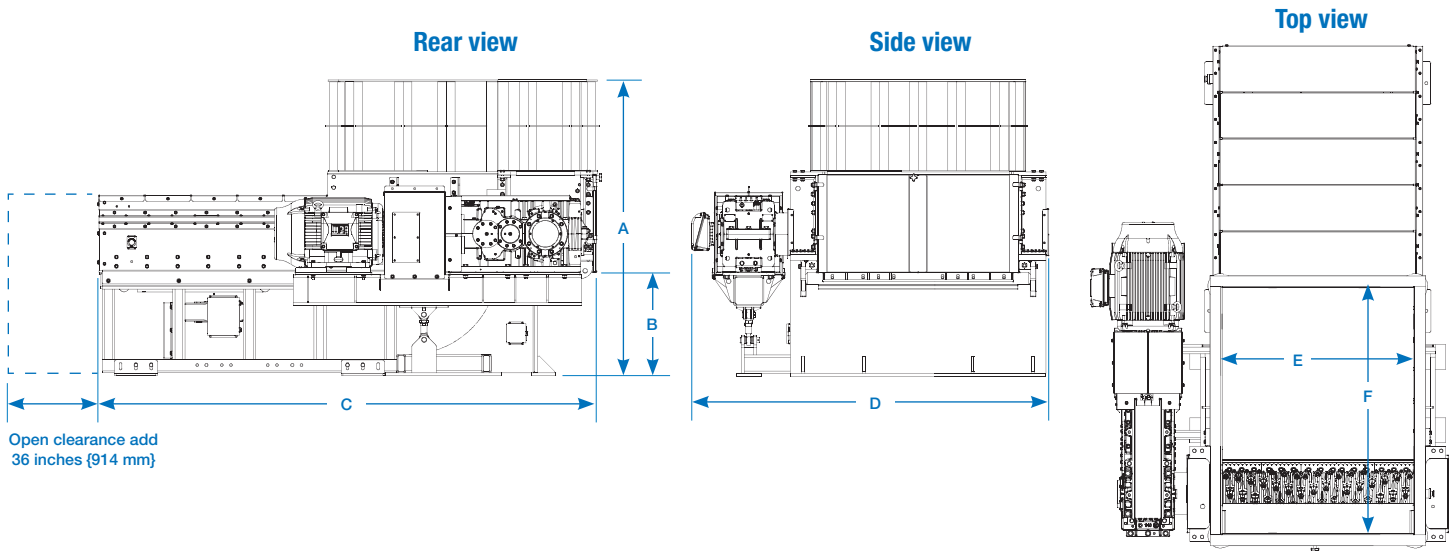
### Auto-Shred Operation Option

With Conair's Auto-Shred control option, fully automatic operation is provided for true "load it and forget it" operation. Up to six fully auto-matic control programs may be easily initiated via the full color touch screen.

Once started, Auto-Shred guides forward motion of the ram for smooth, highly efficient shredding with minimal rotor drive spikes. In the event of a jam, Auto-Shred automatically reverses the rotor to reduce damage.

In addition, Auto-Shred provides fast return-to-home position of the ram for fast recovery and restart of shredding.

# Specifications



Models	Ultra 1542	Ultra 1552	Ultra 1562	Ultra 2052	Ultra 2062	Ultra 2072
<b>Performance characteristics</b>						
Cutting chamber opening inches {mm}	42 x 52 {1067 x 1321}	52 x 60 {1052 x 1524}	62 x 80 {1575 x 2032}	52 x 60 {1052 x 1524}	62 x 80 {1575 x 2032}	72 x 101 {1829 x 2565}
Rotor speed rpm	109 - 130					
Rotor diameter inches {mm}	15 {381}			20 {508}		
Rotor width inches {mm}	42 {1067}	52 {1052}	62 {1575}	52 {1052}	62 {1575}	72 {1829}
Motor range Hp {kW}	50-100 {37-75}	75-200 {56-149}	100-250 {75-186}	150-250 {112-186}	150-300 {112-224}	200-300 {149-224}
Ram height inches {mm}	11 {279}			16 {406}		
Ram hydraulic motor Hp {kW}	7.5 {5.6}					10 {7.5}
Screen hole diameter inches {mm}	1 1/2, 2, 2 1/2, 3, 4 {38, 51, 64, 76, 102}					
Screen type	round (standard) or square options available					
Number of dagger cutters / rows	30 cutters/1 row	37 cutters/1 row	45 cutters/1/row	74 cutters/2 rows	90 cutters/2 rows	106 cutters/2 rows
Number of trap-cut knives / rows (optional)	34 cutters/2 rows	42 cutters/2 rows	52 cutters/2 rows	63 cutters/3 rows	78 cutters/3 rows	90 cutters/3 rows
<b>Dimensions inches {mm}</b>						
A - Overall height (to infeed)	96.5 {2451}			101.5 {2578}		
B - Height of discharge	33.8 {859}					
C - Total length	95.8 {2433}	124.2 {3155}	116.3 {2954}	95.8 {2433}	124.0 {3150}	140.0 {3556}
D - Total width	109.2 {2774}	104.0 {2642}	164.2 {4171}	109.2 {2774}	170.2 {4323}	222.8 {5659}
Length when open	131.8 {3348}	160.2 {4069}	152.3 {3868}	131.8 {3348}	160.0 {4064}	176.0 {4470}
Width of opening	36.0 {914}					
E - Feed hopper opening width	42.1 {1067}	51.4 {1304}	62.3 {1582}	42.0 {1067}	62.3 {1582}	73.3 {1862}
F - Feed hopper opening length	51.5 {1308}	59.0 {1499}	79.8 {2027}	51.5 {1308}	80.4 {2042}	98.0 {2489}
Ram stroke distance	33 {838}	40 {1475}	61 {1549}	33 {838}	60 {1524}	78 {1981}
Installed weight lb {kg}	18000 {8165}	21000 {9525}	25000 {11340}	20000 {9072}	33000 {14969}	36000 {16329}
<b>Voltages Full load amps</b>						
460 V/3 phase/60 hz	Consult Conair					

## Specification Notes

Consult factory for throughput specifications.  
 Specifications may change without notice. Consult with a Conair representative for the most current information.

