

SECURITY

AT A GLANCE

The TrueBlend SB5 system supports a multiple user Role Base Access Control (RBAC) system. The system supports:

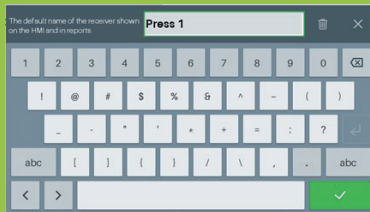
- 28 configurable users
- A fixed 'Guest' user
- At least 1 user assigned as an 'Administrator'
- User-assigned roles to limit access to specific system areas

Parameter	Default	Range	Security
Auto Logout Timeout	15 Min	[0:53]	Admin
This value is the amount of time that will elapse before the user security level is returned to the minimal state. If this value set to 0, then the feature is disabled			
Authorization	Passcode Only	Passcode Only, Passcode + RFID, RFID Only	Admin

Enable self-loading of the blender such that the blender controls the load pump and receiver sequencing. Note: This requires a feature licensing passcode and additional hardware installation.

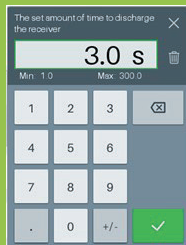
Two Keypads

One keypad for entry of alphanumeric, numerical, and special characters.



One keypad for numerical entry only.

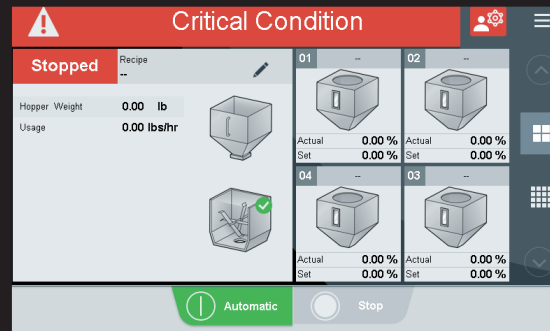
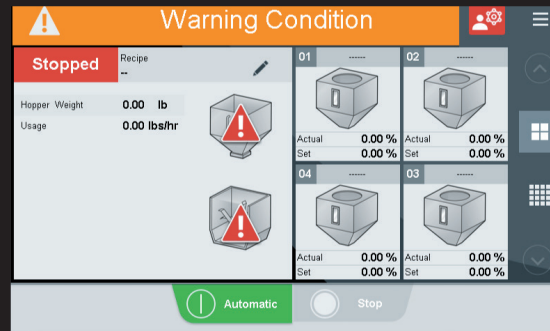
The data may be limited to a specific range of values. The limit values will be shown below the data value box and the value will be changed to the nearest limit value.



ALARMS

INFORMATION • GENERAL • SHUTDOWN

- Information Alarm** (Green) This alarm severity indicates a non-critical condition which should soon be resolved.
- General Alarm** (Orange) This alarm severity indicates a serious condition that needs immediate attention
- Shutdown alarm** (Red) This alarm severity indicates a serious condition that needs immediate attention



WARNING: This card provides only basic installation information. Users must be familiar with all safety information and procedures described in the TrueBLEND User Guide.

Quick Card

OPERATION & SETUP

QBCB020-0522

TrueBLEND

Gravimetric Blender with SB-5 Control



Operation

To Start Blending

1. Load material into the material hopper.
2. Turn on power to the blender. Wait for the Home screen to be displayed.
3. Press **Edit Recipe** (pencil icon), then press **Automatic** on the Home screen to start the blending process.

To Stop Blending

- Press **Stop** to stop the metering and mixing process.



Corporate Office: 724.584.5500
 Instant Access 24/7 (Parts and Service): 800.458.1960
 International: 814.437.6861 | www.conairgroup.com

ALL USER INTERACTION THROUGH THE TOUCH SCREEN



HOME SCREEN

Annotations:

- Status/Mode - Last Recipe without change
- Edit Recipe
- More Info Contextual Help Mode
- Login/User Info
- Main Menu
- Scroll Up (dimmed if not applicable)
- Home - Component View Toggle
- Home - Recipe Data Enlarged Toggle
- On/Running State (dimmed)
- Ready to Start State
- Stop Metering and Mixing Processes

WARNING: This card provides only basic installation information. Users must be familiar with all safety information and procedures described in the TrueBLEND User Guide.

Resin	Actual	Set
01 Resin 2	0.00 %	60.00 %
02 Resin 3	0.00 %	20.00 %
03 Resin 4	0.00 %	12.00 %
04 Resin 5	0.00 %	8.00 %

Save to Standard-Formatted USB Drives

The touch screen unit has two USB ports on the back. Remove the access panel door on the back of the control to gain access. Files that can be saved are:

- System Configuration
- Recipes
- Resins

