



www.conairgroup.com

USER GUIDE
UGH064-0423

ECO Series Chillers

Model ECOA



Please record your equipment's model and serial number(s) and the date you received it in the spaces provided.

It's a good idea to record the model and serial number(s) of your equipment and the date you received it in the User Guide. Our service department uses this information, along with the manual number, to provide help for the specific equipment you installed.

Please keep this User Guide and all manuals, engineering prints and parts lists together for documentation of your equipment.

Date: _____

Manual Number: UGH064-0423 _____

Serial Number(s): _____

Model Number(s) _____

DISCLAIMER: Neither Conair nor its employees shall be liable for errors contained in this User Guide or for incidental, consequential damages in connection with the furnishing, performance or use of this information. Conair makes no warranty of any kind with regard to this information, including, but not limited to the implied warranties of merchantability and fitness for a particular purpose.

Table of Contents

Foreword	1
Safety Guidelines	1
Specifications.....	3
.....	4
Pre-Installation.....	5
Receiving Inspection	5
Unit Storage.....	5
Installation - Chiller	5
Unit Location.....	5
Figure 1 – KSE 40 to 60 Unit Location	6
Figure 2 – KSE 80 to 120 Unit Location	6
Mounting Foundation	6
Rigging	6
Figure 3 – Mounting Platform.....	7
Figure 4 – Rigging.....	7
Water Pressure Gauges.....	8
SystemTemperature Sensor	8
Chiller Flow Sensor.....	8
Installation - Electrical.....	9
Control Operation	10
Screen Navigation.....	10
System Initialization.....	10
Figure 5 – Start-Up Splash Screen.....	10
Home – Chiller Home Screen.....	11
System Overview	11
Figure 6 – Chiller Home Screen	11
Table 1 – System Overview Functions.....	11
Starting and Stopping the Chiller.....	12
Starting the Chiller	12
Figure 7 – Chiller Start	12
Stopping the Chiller	12
Figure 8 – Chiller Stop	12
Menu 1 - Overview.....	12
Figure 9 – Menu 1 Screen	12
Menu 2 - Overview.....	12
Figure 10 – Menu 2 Screen.....	12
Menu 1 - Alarms.....	13
Alarms Active	13
Figure 11 – HMI Alarm Handler.....	13
Warning Glycol.....	13
Figure 12 – Warning Antifreeze.....	13
Menu 1 – Diagnostics.....	14
Diagnostics Menu.....	14

Figure 13 – Diagnostics Menu Screen.....	14
Figure 14 – Diagnostics Circuit Details Screen	14
Figure 15 – Diagnostics Circuit Interlock Screen.....	14
Figure 16 – Diagnostics Pumps Screen.....	14
Figure 17 – Diagnostics Process Screen	14
Figure 18 – Diagnostics Hardware Screen.....	14
Figure 19 – Diagnostics Export Data Screen	14
Menu 1 – Security.....	15
Security Menu.....	15
Figure 21 – Security – Log In Screen.....	15
Figure 22 – Security – Add User Screen	15
Figure 23 – Security – Edit User Screen	15
Figure 24 – Security – Delete User Screen.....	16
Figure 25 – Security – Change Password Screen	16
Table 2 – Security – Users and Passwords.....	16
Menu 1 – Inputs / Outputs.....	16
Figure 26 – Main Inputs/Outputs Screen.....	16
Figure 27 – Inputs/Outputs – Temperature Inputs Screen	16
Figure 28 – Inputs/Outputs – Pressure Inputs Screen	16
Figure 30 – Inputs/Outputs – Digital Inputs Screen	17
Figure 31 – Inputs/Outputs – Analog Outputs Screen.....	17
Figure 32 – Inputs/Outputs – Digital Outputs Screen	17
Menu 1 – User Setup.....	17
Figure – 33 –User Setup - Menu 1 Screen.....	17
Figure 34 – User Setup - Menu 2 Screen	17
Figure 35 – User Setup - Menu 3 Screen	17
User Setup – Alarm Setup.....	18
Figure 36 – User Setup - Alarm Setup Screen.....	18
Table 3 – Alarm Setup Parameters	18
User Setup – Hot Gas Bypass.....	18
Figure 37 – User Setup – Hot Gas Bypass Setup Screen.....	18
Table 4 – Hot Gas Bypass Valve Setup Parameters.....	18
User Setup – Pump Control.....	19
Pump Control Screen.....	19
Figure 38 – User Setup – Process Pumps Screen.....	19
User Setup – EEV Control	19
Figure 39 – User Setup – EEV Control Setup Screen	19
Table 5 – EEV Control Setup Parameters	19
User Setup – Compressor Staging.....	20
Figure 40 – User Setup – Compressor Staging Setup Screen.....	20
Table 6 – Compressor Staging Setup Parameters.....	20
User Setup – Stage Order.....	20
Compressor Stage Order Screen.....	20
Figure 41 – User Setup – Stage Order Setup Screen.....	20
Table 7 – Stage Order Setup Parameters.....	20
User Setup – Discharge Control Setup.....	21
Discharge Control Setup Screen	21

Figure 42 – User Setup – Discharge Control Setup Screen.....	21
Table 8 – Discharge Control Setup Parameters.....	21
User Setup – Dynmic Lift Setup	21
Dynamic Lift Setup Screen.....	21
Figure 43 – User Setup – Dynamic Lift Setup Screen.....	21
Table 9 – Dynamic Lift Parameters.....	21
User Setup - Modbus RTU Setup	21
Modbus RTU Setup Screen.....	21
Figure 44 – User Setup – Modbus RTU Setup Screen.....	21
User Setup – Temperature Retransmit.....	22
Figure 45 – User Setup – Temperature Retransmit Setup Screen.....	22
User Setup – IP Address.....	22
Figure 46 – User Setup – IP Address Setup Screen.....	22
User Setup – Units.....	22
Figure 47 – User Setup – Display Units Setup Screen.....	22
User Setup – Remote Setpoint	22
Figure 48 – User Setup – Remote Setpoint Setup Screen.....	22
User Setup – Primary / Secondary	22
Figure 49 – User Setup – Primary / Secondary Setup Screen	22
User Setup – Chiller Capacity.....	23
Chiller Capacity Screen.....	23
Figure 50 – User Setup – Chiller Capacity Setup Screen.....	23
User Setup – Date/Time.....	23
Date/Time Screen.....	23
Figure 51 – User Setup – Date / Time Setup Screen	23
User Setup – Pump Down	23
Pump Down Screen.....	23
Figure 52 – User Setup – Pump Down Setup Screen.....	23
User Setup – Evaporator Valve.....	23
Evaporator Valve Control Screen.....	23
Figure 53 – User Setup – Evaporator Valve Control Setup Screen	23
User Setup – 3-Way Modulating Valve 1	24
Figure 54 – User Setup - 3-Way Modulating Valve 1 Screen	24
User Setup – 3-Way Modulating Valve 2	24
Figure 55 – User Setup – 3 Way Modulating Valve 2 Screen.....	24
User Setup – Tank Level.....	24
Figure 56 – Tank Level Screen.....	24
User Setup – Short Cycle	24
Figure 57 – Short Cycle Enabled Screen.....	24
Figure 58 – Short Cycle Disabled Screen	24
User Setup – Misc Process Control.....	25
User Setup – Misc Local Mode.....	25
User Setup – Misc Automatic Start.....	25

Figure 59 – User Setup – Misc Control Setup Screen	25
Menu 1 – Trending.....	25
Figure 60 – System Trending Screen	25
Menu 2 – Full Screen	25
Figure 61 – Menu 2 – Full Screen.....	25
Modbus.....	26
Table 10 – Modbus Table.....	26
Start-Up	28
Step 1 – Connect Main Power	28
Step 2 – Fill Coolant Circuit	28
System Fill Water Chemistry Requirements.....	28
Table 11 – Fill Water Chemistry Requirements.....	29
Freeze Protection.....	29
Step 3 – Check Condenser.....	30
Step 4 – Check Refrigerant Valves.....	30
Step 5 – Check Low Temperature Alarm.....	30
Step 6 – Turn On Control Power	30
Step 7 – Establish Coolant Flow.....	30
Step 8 – Initial Unit Operation.....	31
Preventive Maintenance.....	31
Once a Week.....	31
Once a Month.....	32
Once Every 6 Months.....	32
Once a Year.....	32
Cleaning the Operator Interface	32
General Troubleshooting.....	33
Preventive Maintenance Checklist	34
Drawings.....	35

Foreword

The central chiller consists of a refrigeration circuit to provide cooling water to coolant.

This manual is to serve as a guide for installing, operating, and maintaining the equipment. Improper installation, operation, and maintenance can lead to poor performance and/or equipment damage. Use qualified installers and service technicians for all installation and maintenance of this equipment.

This manual is for our standard product. The information in this manual is general in nature. Unit-specific drawings and supplemental documents are included with the equipment as needed. Additional copies of documents are available upon request.

Due to the ever-changing nature of applicable codes, ordinances, and other local laws pertaining to the use and operation of this equipment, we do not reference them in this manual.

The equipment uses a hydrofluorocarbon (HFC), trade named R-410A, as a chemical refrigerant for heat transfer purposes. This chemical is sealed and tested in a pressurized system containing ASME coded vessels; however, a system failure will release it. Refrigerant gas can cause toxic fumes if exposed to fire. Place these units in a well-ventilated area, especially if open flames are present. Failure to follow these instructions could result in a hazardous condition. We recommend the use of a refrigerant management program to document the type and quantity of refrigerant in the equipment. In addition, we recommend only licensed and EPA certified service technicians work on our refrigeration circuits.

Safety Guidelines

Observe all safety precautions during installation, start-up, and service of this equipment. The following is a list of symbols used in this manual and their meaning.



General Warning



Electricity Warning



Sharp Element Warning



Hot Surface Warning



Flammable Material Warning



Explosive Material Warning



General Mandatory Action



Wear Eye Protection



Wear Protective Gloves



Wear Ear Protection



Disconnect Before Carrying Out Maintenance or Repair



Connect an Earth Terminal to Ground

Only qualified personnel should install, start-up, and service this equipment. When working on this equipment, observe precautions in this manual as well as tags, stickers, and labels on the equipment.



WARNING: Any use or misuse of this equipment outside of the design intent may cause injury or harm.



WARNING: Vent all refrigerant relief valves in accordance to ANSI/ASHRAE Standard 15, Safety Code for Mechanical Refrigeration. Locate this equipment in a well-ventilated area. Inhalation of refrigerant can be hazardous to your health and the accumulation of refrigerant within an enclosed space can displace oxygen and cause suffocation.



WARNING: This equipment contains hazardous voltages that can cause severe injury or death.



WARNING: This equipment contains refrigerant under pressure. Accidental release of refrigerant under pressure can cause personal injury and or property damage.



WARNING: This equipment may contain fan blades or other sharp edges. Make sure all fan guards and other protective shields are securely in place.



WARNING: The exposed surfaces of motors, refrigerant piping, and other fluid circuit components can be very hot and can cause burns if touched with unprotected hands.



CAUTION: Disconnect and lock out incoming power before installing, servicing, or maintaining the equipment. Connecting power to the main terminal block energizes the entire electric circuitry of the unit. Shut off the electric power at the main disconnect before opening access panels for repair or maintenance.



CAUTION: Wear eye protection when installing, maintaining, or repairing the equipment to protect against any sparks, debris, or fluid leaks.



CAUTION: The equipment will exceed 70 dBA sound pressure at 1 meter distance and 1 meter elevation when operating. Wear ear protection as required for personal comfort when operating or working in close proximity to the chiller.



CAUTION: Wear protective gloves when installing, maintaining, or repairing the equipment to protect against any sparks, debris, or fluid leaks.

Specifications

TPHX062-0321

COOLING SYSTEMS ► **ECO SERIES CHILLERS**

Specifications ECO Air-Cooled Chiller 60 Hz

Model	ECO-040	ECO-050	ECO-060	ECO-080	ECO-100	ECO-120
Performance characteristics						
Cooling capacity** tons	40	50	60	80	100	120
Setpoint range °F {°C}	20 to 80 {-2.6 to 26}					
Compressors (qty)	2	2	2	4	4	4
Process fluid in/out - Standard	3 inch			4 inch		
Process fluid in/out - High Flow	4 inch				6 inch	
Minimum Unloaded Capacity tons	20	25	30	20	25	30
Minimum Unloaded Capacity with HGBP Option tons	10	13	15	10	13	15
Dimensions, weights, amps (chiller only)						
A - Length inches {mm}	128 {3251}	173 {4394}	173 {4394}	128 {3251}	173 {4394}	173 {4394}
B - Width inches {mm}	47 {1194}			88 {2235}		
C - Height inches {mm}	79 {2007}					
Shipping weight lbs {kg}	2876 {1305}	3976 {1804}	3976 {1804}	4654 {2111}	5954 {2701}	5954 {2701}
Operating weight lbs {kg}	2976 {1350}	4251 {1928}	4251 {1928}	4754 {2156}	6164 {2796}	6229 {2825}
Dimensions, weights, amps (chiller with standard pressure pump)						
Pump models (process/chiller)	7.5	7.5	10	15	15	15
Nominal flow rate gpm	96	120	144	192	240	288
Nominal discharge pressure psi	41	39	50	54	50	45
Shipping Weight lbs {kg}	3009 {1365}	4109 {18647}	4176 {1894}	4858 {2204}	6158 {2793}	6223 {2822}
Operating Weight lbs {kg}	3109 {1410}	4384 {1991}	4451 {2019}	4958 {2249}	6368 {2889}	6498 {2947}
Dimensions, weights, amps (chiller with standard pressure pump with dedicated standby pump)						
Pump models (process/chiller)	7.5	7.5	10	15	15	15
Nominal flow rate gpm	96	120	144	192	240	288
Nominal discharge pressure psi	41	39	50	54	50	45
Shipping Weight lbs {kg}	3142 {1425}	4242 {1924}	4376 {1985}	5062 {2296}	6362 {2886}	6492 {2945}
Operating Weight lbs {kg}	3242 {1471}	4517 {2049}	4651 {2110}	5162 {2341}	6637 {3011}	6767 {3070}
Dimensions, weights, amps (chiller with high pressure pump)						
Pump models (process/chiller)	15	15	15	20	20	25
Nominal flow rate gpm	96	120	144	192	240	288
Nominal discharge pressure psi	86	82	80	88	83	76
Shipping Weight lbs {kg}	3088 {1401}	4188 {1900}	4188 {1900}	4977 {2258}	6277 {2847}	6277 {2847}
Operating Weight lbs {kg}	3188 {1446}	4463 {2024}	4463 {2024}	5077 {2303}	6552 {2972}	6552 {2972}
Dimensions, weights, amps (chiller with high pressure pump with dedicated standby pump)						
Pump models (process/chiller)	15	15	15	20	20	25
Nominal flow rate gpm	96	120	144	192	240	288
Nominal discharge pressure psi	86	82	80	88	83	76
Shipping Weight lbs {kg}	3300 {1497}	4400 {1996}	4400 {1996}	5300 {2404}	6600 {2994}	6600 {2994}
Operating Weight lbs {kg}	3400 {1542}	4675 {2121}	4675 {2121}	5400 {2449}	6875 {3119}	6875 {3119}

Specification Notes

** Cooling tons based on 12,000 BTU/Hr/ton with 50°F leaving coolant and 95°F ambient air, R410A refrigerant.
 Operating weight varies based on system refrigerant charge and operating conditions.
 Specifications may change without notice. Check with a Conair representative for the most current information.

Specifications Electrical Data 60 Hz

Model	Rated Voltage	Chiller Only		Chiller with Standard Pressure Pump(s)		Chiller with High Pressure Pump(s)	
		MCA [†] amps	MOP [†] amps	MCA [†] amps	MOP [†] amps	MCA [†] amps	MOP [†] amps
ECO-040	208	179	250	204	250	226	250
	230	179	250	202	250	222	250
	460	77	100	89	110	99	125
	575	63	80	72	90	80	100
ECO-050	208	215	300	241	300	263	300
	230	215	300	239	300	259	300
	460	97	125	109	125	119	150
	575	87	110	97	125	105	125
ECO-060	208	270	350	302	400	317	400
	230	270	350	299	400	313	400
	460	135	175	149	200	156	200
	575	121	150	132	175	138	175
ECO-080	208	339	400	386	450	415	450
	230	339	400	382	450	408	450
	460	147	175	168	175	182	200
	575	119	125	136	150	147	150
ECO-100	208	409	450	456	500	485	500
	230	409	450	452	500	478	500
	460	184	200	206	225	219	250
	575	166	200	183	200	193	225
ECO-120	208	512	600	573	600	588	600
	230	512	600	567	600	581	600
	460	255	300	283	300	290	300
	575	228	250	251	300	256	300

Specification Notes

[†] MCA is minimum circuit ampacity (for wire sizing). MOP is maximum overcurrent protection, used for sizing main power protection device. Specifications may change without notice. Check with a Conair representative for the most current information.

Pre-Installation

Receiving Inspection

When the unit arrives, verify the information on the unit nameplate agrees with the order acknowledgement and shipping papers. Inspect the equipment for any visible damage and verify all items shown on the bill of lading are present. If damage is evident, document it on the delivery receipt by clearly marking any item with damage as "unit damage" and notify the carrier. In addition, notify our Customer Service Department and they will provide assistance with preparing and filing freight damage claims, including arranging for an estimate on repair costs; however, filing the shipping damage claim is the responsibility of the receiving party. Do not install damaged equipment without getting the equipment repaired.

Shipping damage is the responsibility of the carrier. To protect against possible loss due to damage incurred during shipping and to expedite payment for damages, it is important to follow proper procedures and keep records. Photographs of damaged equipment are excellent documentation for your records.

Start unpacking the unit, inspect for concealed damage, and take photos of any damage found. Once received, equipment owners have the responsibility to provide reasonable evidence that the damage did not occur after delivery. Photos of the equipment damage while the equipment is still partially packed will help in this regard. Refrigerant lines can be susceptible to damage in transit. Check for broken lines, oil leaks, damaged controls, or any other major component torn loose from its mounting point.

Record any signs of concealed damage and file a shipping damage claim immediately with the shipping company. Most carriers require concealed damages be reported within 15 days of receipt of the equipment. In addition, notify our Customer Service Department and they will provide assistance with preparing and filing freight damage claims, including arranging for an estimate on repair costs; however, filing the shipping damage claim is the responsibility of the receiving party.

Chillers designed for use with a remote air-cooled condenser and the remote condensers themselves ship with a nitrogen holding charge. Check the remote condenser for signs of leaks prior to rigging. This will ensure no coil damage has occurred after the unit left the factory. The condenser ships with the legs removed. Mount the legs to the condenser using the provided nuts, bolts, and washers.

Unit Storage

When storing the unit it is important to protect it from damage. Blow out any water from the unit; cover it to keep dirt and debris from accumulating or getting in, and store in an indoor sheltered area that does not exceed 145°F.

Installation - Chiller

Unit Location

To ensure proper airflow and clearance space for proper operation and maintenance, ensure the condenser airflow is unrestricted on both the inlet and outlet of the chiller. Refer to Figure 1 and Figure 2 for minimum allowable clearance around the chiller and to minimize the potential for air recirculation. It is acceptable to reduce the clearance on the control panel side to 4 feet while still meeting NEC code and without impeding performance. When installing multiple chillers in the same location, the minimum separation between the sides of the chillers may be reduced to 6 feet without sacrificing performance provided the remaining sides are unrestricted. For acceptable clearance with layout involving more than two chillers, please contact factory. Avoid locating piping or conduit over the unit to ensure easy access with an overhead crane or lift to lift out heavier components during replacement or service.

Consider locating the condenser where fan noise and vibration transmission into nearby workspaces is unlikely.

Figure 1 – KSE 40 to 60 Unit Location

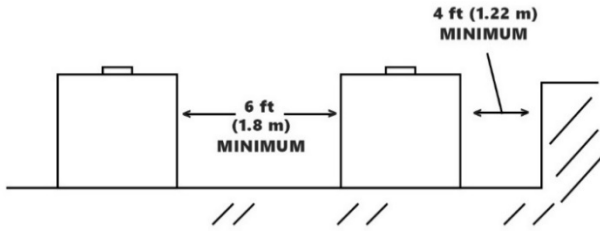
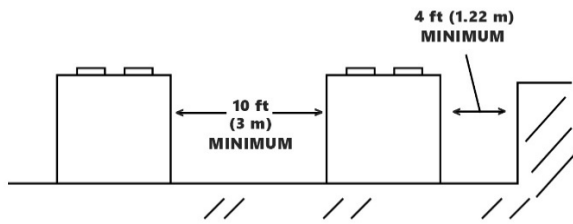


Figure 2 – KSE 80 to 120 Unit Location



Mounting Foundation

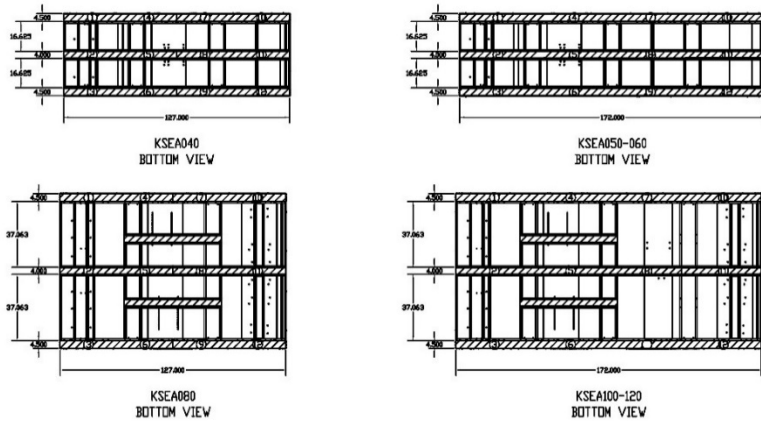
Install the unit on a rigid, non-warping mounting pad, concrete foundation, or level floor suitable to support the full operating weight of the equipment. When installed the equipment must be level within $\frac{1}{4}$ inch over its length and width. When vibration isolators are required, mount them at the locations shown in Figure 3.

Rigging

The chiller has a frame to facilitate easy movement and positioning with a crane provided proper lifting bars, spreader bars, and rigging is used. Use spreader bars to keep cables or chains clear of the unit frame and sides. Follow proper rigging methods to prevent damage to components. Avoid impact loading caused by sudden jerking when lifting or lowering the chiller. Use pads where abrasive surface contact may occur as shown in Figure 4.

Figure 3 – Mounting Platform

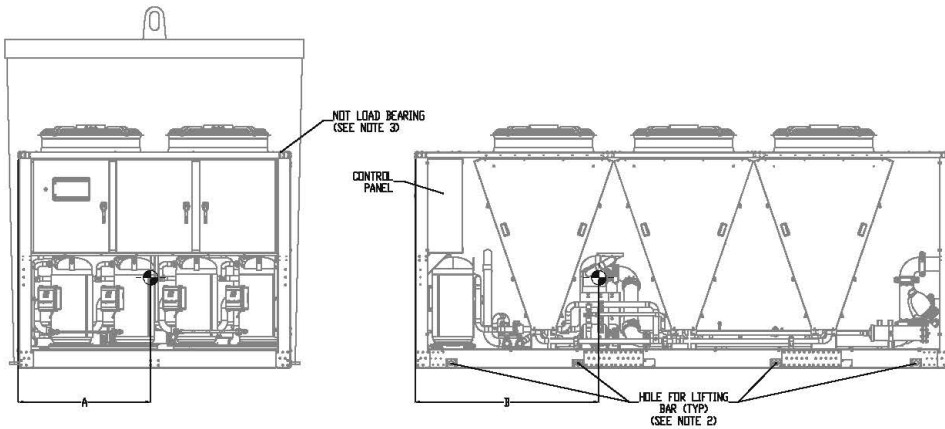
MODEL	WITHOUT PUMPS												WITH PUMPS											
	1	2	3	4	5	6	7	8	9	10	11	12	1	2	3	4	5	6	7	8	9	10	11	12
KSEA040	P24	P24	P24	P21	P21	P21	P21	P21	P24	P24	P24	P44	P44	P44	P27	P27	P27	P61	P61	P61	P44	P44	P44	
KSEA050	309	309	309	386	386	386	391	391	399	399	399	396	396	396	396	396	396	348	348	348	348	348	348	
KSEA060	309	309	309	392	392	392	395	395	399	399	399	395	395	395	398	398	398	347	347	347	347	347	347	
KSEA080	369	369	369	459	459	459	362	362	362	362	362	387	387	387	492	492	492	393	393	393	387	387	387	
KSEA100	469	469	469	389	389	389	463	463	463	463	463	488	488	488	601	601	601	495	495	495	488	488	488	
KSEA120	480	480	480	578	578	578	463	463	463	463	463	488	488	488	629	629	629	487	487	487	488	488	488	



NOTES:
 1) CONTROL PANEL IS TO THE LEFT ON ALL VIEWS.
 2) ALL HATCHED SURFACES SHOULD BE SUPPORTED.

Figure 4 – Rigging

MODEL	CENTER OF GRAVITY					
	WITHOUT PUMPS			WITH PUMPS		
	A	B	WEIGHT	A	B	WEIGHT
KSEA040	24.7	51.1	2876	24.0	55.3	3142
KSEA050	24.5	70.0	3976	23.9	74.9	4188
KSEA060	24.8	67.4	3976	23.9	74.1	4188
KSEA080	45.4	45.6	4654	44.5	49.2	4977
KSEA100	47.4	62.5	5954	46.8	66.7	6277
KSEA120	42.5	59.0	5954	42.1	64.2	6277



NOTES:
 1) HOLES AT BOTTOM OF FRAME CAN FIT UP TO 1-1/2" LIFTING BAR.
 2) ALL FOUR LIFTING HOLES MUST BE USED TO MAINTAIN STRUCTURE INTEGRITY.
 3) SPREADER BAR REQUIRED TO KEEP CABLES OFF TOP EDGE.

Process Fluid Piping

Proper insulation of chilled process fluid piping is crucial to prevent condensation. The formation of condensation adds a substantial heat load to the chiller.

The importance of properly sized piping cannot be overemphasized. See the ASHRAE Handbook or other suitable design guide for proper pipe sizing. In general, run full size piping out to the process and reduce pipe size at connections as needed. One of the most common causes of unsatisfactory chiller performance is poor piping system design. Avoid long lengths of hoses, quick disconnect fittings, and manifolds wherever possible as they offer high resistance to water flow. When manifolds are required, install them as close to the use point as possible. Provide flow-balancing valves at each machine to assure adequate water distribution in the entire system.

Water Pressure Gauges

Install pressure gauges in the inlet and outlet of the evaporator water piping to provide the ability to read the pressure drop across the chiller and aid in preventive maintenance and troubleshooting.



WARNING: Vent all refrigerant relief valves in accordance to ANSI/ASHRAE Standard 15, Safety Code for Mechanical Refrigeration. Locate this equipment in a well-ventilated area. Inhalation of refrigerant can be hazardous to your health and the accumulation of refrigerant within an enclosed space can displace oxygen and cause suffocation.



WARNING: This equipment contains hazardous voltages that can cause severe injury or death.



WARNING: This equipment contains refrigerant under pressure. Accidental release of refrigerant under pressure can cause personal injury and or property damage.



WARNING: This equipment may contain fan blades or other sharp edges. Make sure all fan guards and other protective shields are securely in place.



WARNING: The exposed surfaces of motors, refrigerant piping, and other fluid circuit components can be very hot and can cause burns if touched with unprotected hands.



CAUTION: Disconnect and lock out incoming power before installing, servicing, or maintaining the equipment. Connecting power to the main terminal block energizes the entire electric circuitry of the unit. A power supply provides 24 VDC control power. Shut off the electric power

at the main disconnect before opening access panels for repair or maintenance.



CAUTION: Wear eye protection when installing, maintaining, or repairing the equipment to protect against any sparks, debris, or fluid leaks.



CAUTION: The equipment will exceed 70 dBA sound pressure at 1 meter distance and 1 meter elevation when operating. Wear ear protection as required for personal comfort when operating or working in close proximity to the chiller.



CAUTION: Wear protective gloves when installing, maintaining, or repairing the equipment to protect against any sparks, debris, or fluid leaks.

System Temperature Sensor

This section only applies to installations where multiple chillers are in a common system where one chiller is the primary chiller with the other chillers serving as secondary chillers. In those situations, a field-installed fluid-temperature sensor is required in the common process fluid supply and return piping. Install the sensor downstream of all individual chilled water supply streams. Position the temperature sensor to read the mixed supply temperature. The supply temperature sensor is normally the control sensor for the chiller system set point and determines the loading/unloading of the compressors of the system.

The temperature sensor comes from the factory with a 1/2" NPT male fitting thermowell for direct mounting in the field piping. Mount the temperature sensor in a minimum pipe size of 3". Wire the temperature sensor to the designated primary chiller electrical enclosure and land at the appropriate terminal blocks within the enclosure. See the chiller electrical schematic for further details.

Chiller Flow Sensor

This section only applies to installations when the flow sensor option is present. In those situations, a field-installed chiller flow sensor is required. Mount the flow sensor in the process fluid supply piping in an area of pipe with a minimum of 10 pipe diameters of straight run after any valves or pipefittings. This ensures the stream of fluid is solid and stable for accurate flow measurement.

The flow sensor comes from the factory with a 1/2" NPT compression fitting for direct mounting in the

field piping. Mount the flow sensor in a minimum pipe size of 2". Insert the stem of the sensor into the compression fitting so the tip of the sensor is at the approximate center of the pipe. The sensor requires five pipe diameters of straight run piping on both sides of the sensor. Wire the flow sensor to the chiller electrical enclosure and land at the appropriate terminal blocks with the enclosure. See the chiller electrical schematic for further details.

Installation - Electrical

All wiring must comply with local codes and the National Electric Code. Minimum circuit amps (MCA) and other unit electrical data are on the unit nameplate. A unit specific electrical schematic ships with the unit. Measure each leg of the main power supply voltage at the main power source. Voltage must be within the voltage utilization range given on the drawings included with the unit. If the measured voltage on any leg is not within the specified range, notify the supplier and correct before operating the unit. Voltage imbalance must not exceed two percent. Excessive voltage imbalance between the phases of a three-phase system can cause motors to overheat and eventually fail. Voltage imbalance is determined using the following calculations.

$$\% \text{ Imbalance} = (V_{\text{avg}} - V_x) \times 100 / V_{\text{avg}}$$

$$V_{\text{avg}} = (V_1 + V_2 + V_3) / 3$$

V_x = phase with greatest difference from V_{avg}
 For example, if the three measured voltages were 442, 460, and 454 volts, the average would be:

$$(442 + 460 + 454) / 3 = 452$$

The percentage of imbalance is then:

$$(452 - 442) \times 100 / 452 = 2.2 \%$$

This exceeds the maximum allowable of 2%.

There is a terminal block for main power connection to the main power source. The main power source should be connected to the terminal block through an appropriate disconnect switch. There is a separate lug in the main control panel for grounding the unit. Check the electrical phase sequence at installation and prior to start-up. Operation of the compressor with incorrect electrical phase sequencing will result

in mechanical damage to the compressors. Check the phasing with a phase sequence meter prior to applying power. The proper sequence should read "ABC" on the meter. If the meter reads "CBA", open the main power disconnect and switch two line leads on the line power terminal blocks (or the unit mounted disconnect). Do not interchange any load leads that are from the unit contactors or the motor terminals.



WARNING: This equipment contains hazardous voltages that can cause severe injury or death.



WARNING: This equipment contains refrigerant under pressure. Accidental release of refrigerant under pressure can cause personal injury and or property damage.



WARNING: This equipment may contain fan blades or other sharp edges. Make sure all fan guards and other protective shields are securely in place.



WARNING: The exposed surfaces of motors, refrigerant piping, and other fluid circuit components can be very hot and can cause burns if touched with unprotected hands.



CAUTION: Disconnect and lock out incoming power before installing, servicing, or maintaining the equipment. Connecting power to the main terminal block energizes the entire electric circuitry of the unit. Electric power at the main disconnect should be shut off before opening access panels for repair or maintenance.



CAUTION: Wear eye protection when installing, maintaining, or repairing the equipment to protect against any sparks, debris, or fluid leaks.



CAUTION: Wear protective gloves when installing, maintaining, or repairing the equipment to protect against any sparks, debris, or fluid leaks.



CAUTION: Wire the unit ground in compliance with local and national codes.



CAUTION: The unit requires the main power to remain connected during off-hours to energize the compressor's crankcase heater. Disconnect main power only when servicing the chiller. The crankcase heater should remain on when the compressor is off to ensure liquid refrigerant does not accumulate in the compressor crankcase. Connect main power at least 24 hours prior to initial startup.

Control Operation

The units uses a Programmable Logic Controller (PLC) and color touch-screen operator interface display that serves as the Human to Machine Interface (HMI).

Screen Navigation

The overall menus structure allows for quick access and navigation to each section of the control monitoring and control system. The following are the main buttons used to navigate through the various screens.



Menu Button – This button is located on the top left of the screen. Touch this button to go to Menu 1.



Home Button – This button is located on the bottom of the screen. Touch this button to go to the Home Overview Screen.



Alarm Button – This button is located on the bottom of the screen. This button shows the number of alarms active. Touch this button to go to the HMI Alarm Handler Screen.



Alarm Reset Button – This button is located on the bottom of the screen. Touch this button to acknowledge and silence active alarms.



Start/Stop Button – This button is located at the bottom right of the screen. Touch this button to start and stop the chiller. When stopped, the button outline is red, when running the button outline is green.



Arrow Button – These buttons appear in multiple areas of the screen. Touch these buttons to navigate forward, back, up or down in menus and screens.

Some screens are password protected to prevent unintended changes. There are two levels of security (*Username is case sensitive*):

- “User” Level Password = 9999
- “Supervisor” Level Password = 7720

When navigating screens any user adjustable areas appear in a slightly different color. Touching one of these areas brings up a keypad. Use the keypad to

enter the appropriate user and password to gain access.

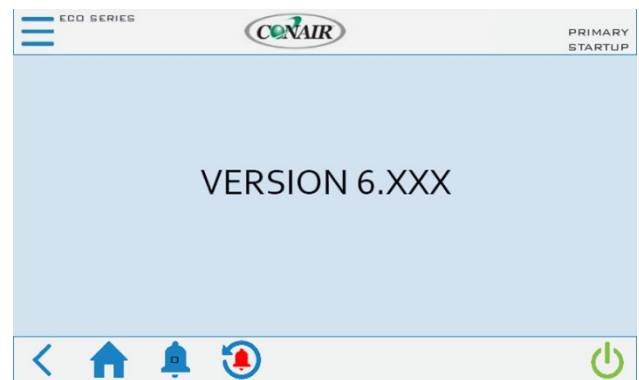
The user-level password allows access to the most common functions; however, there are a few screens protected with a Supervisor-level password. Changing items in Supervisor-level menus without fully understanding the impact can lead to improper or poor performance of the unit. Contact our Customer Service department for assistance with any questions before making changes.

There is a reset function to restore the factory default settings. When this is done you will need to follow the on-screen prompts to reconfigure the chiller based on the options present. For assistance with this process, please contact our Customer Service Department and have the unit Serial Number ready for reference.

System Initialization

Upon power-up, the first screen to appear is the Start-Up Screen as shown in Figure . This screen will display while the Programmable Logic Controller (PLC) and Human Machine Interface (HMI) establish communications. The PLC/HMI version shows on the screen.

Figure 5 – Start-Up Splash Screen



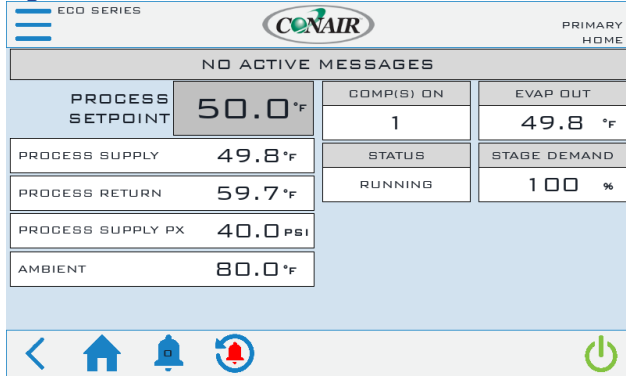
Once control communication is established, the HMI screen automatically switches to the Home Screen.

Home – Chiller Home Screen

System Overview






This screen provides an overall synopsis of the chiller system, quick links to other views, as well as other additional information.

Figure 6 – Chiller Home Screen



Note: This is an example of a chiller with the most extensive set of options; your screen may appear slightly differently based on your actual chiller configuration.

Table 1 – System Overview Functions

Function	Description	Screen Reference
Comp(s) ON	Informs the operator of the compressors in operation in each circuit	None
Status Messaging	Provides information about any warnings or alarms which may have occurred.	None
Setpoint	Modify the Setpoint by touching the current Setpoint on the HMI. An authorized security level password is required to enter a new Setpoint.	None
Menu Button	Changes to the Menu 1 screen 	Figure
Alarms	A listing of active and prior alarm history. The number displayed on the bell indicates the number of active alarms. 	Figure
Alarm(s) Reset	Will both silence and reset any alarms 	None
Start / Stop	Pressing the Start button will provide the ability to start or stop the chiller as well as any other networked chillers attached to this system.	Figure 7 Figure 4 – Rigging
	System Off  System Running 	N/A

Starting and Stopping the Chiller

Starting the Chiller

This screen provides the ability to start chiller operation.

Figure 7 – Chiller Start



Stopping the Chiller

This screen provides the ability to stop chiller operation.

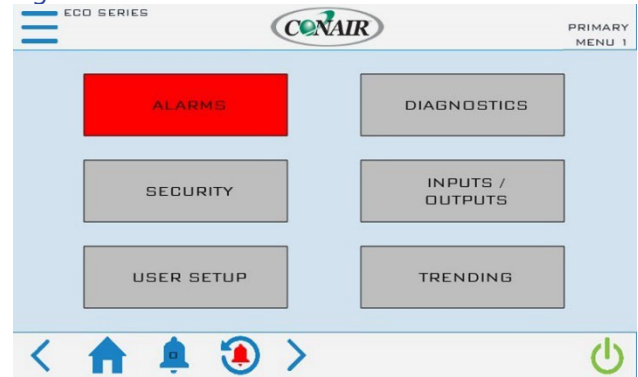
Figure 8 – Chiller Stop



Menu 1 - Overview

The Menu 1 Screen Figure 9 contains buttons to allow navigation to various sections of the control system. Some parameters are password protected. The main User level password is for gaining access to changing the main system set point and various other warning and alarm settings. A few higher-level areas require a high-level "Supervisor" password. Contact our Customer Service Department for assistance in accessing any restricted menus.

Figure 9 – Menu 1 Screen



Menu 2 - Overview

The Menu 2 Screen Figure 10 contains additional functionality. This includes the ability to show a full screen view as well as updating the HMI program via thumb drive.

Figure 10 – Menu 2 Screen



Menu 1 - Alarms

Alarms Active

When a critical system fault occurs, the controller logs the faults to the HMI alarm handler. To silence this alarm, press the ALARM SILENCE button. If multiple alarms are active at once, use the DOWN and UP buttons to view all alarms. All alarms must be resolved and then reset using the RESET ALARM button.

Figure 11 – HMI Alarm Handler



Note: The above shows there are no alarms; if an alarm condition were present, it would appear in this window.

Warning Glycol

If the Chiller Setpoint goes below 45°F, the Glycol Warning Screen will appear as in Figure 12. The amount of antifreeze will vary depending on the actual desired operating conditions and should be enough to provide freeze protection to temperatures 15°F colder than the coldest temperature anticipated. Use only antifreeze solutions designed for heat exchanger duty. Do not use automotive antifreeze due to the potential for fouling that can occur once its relatively short-lived inhibitors break down. Verify the proper Glycol solution is used and acknowledge "OK" the Warning.

Figure 12 – Warning Antifreeze



Menu 1 – Diagnostics

Diagnostics Menu

The diagnostics screens provide detailed information about the various portions of the system.

Figure 13 – Diagnostics Menu Screen

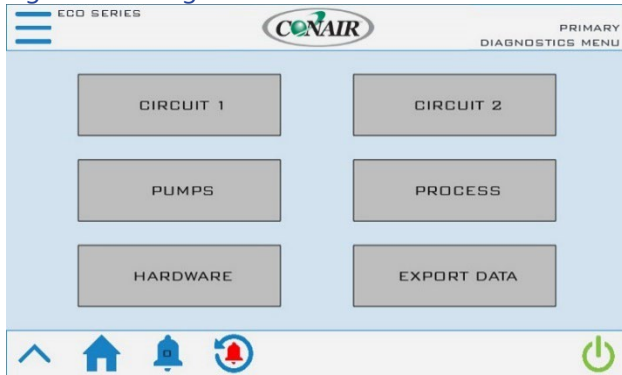


Figure 14 – Diagnostics Circuit Details Screen

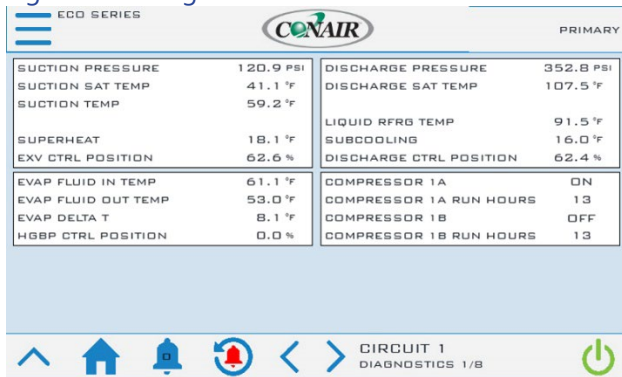


Figure 15 – Diagnostics Circuit Interlock Screen

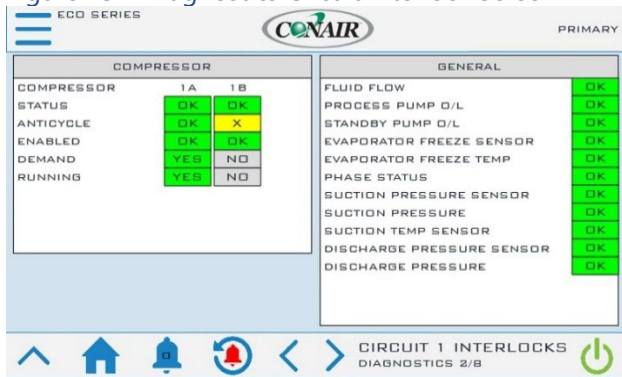


Figure 16 – Diagnostics Pumps Screen

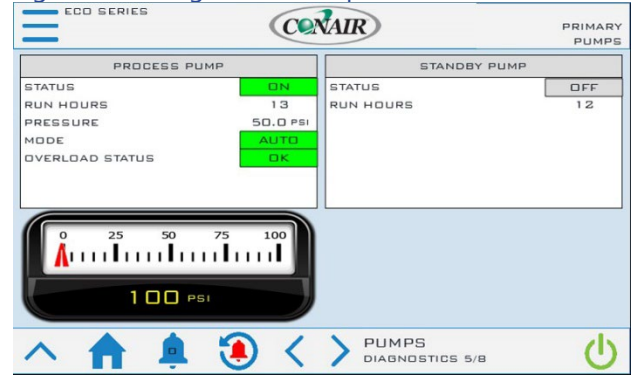


Figure 17 – Diagnostics Process Screen

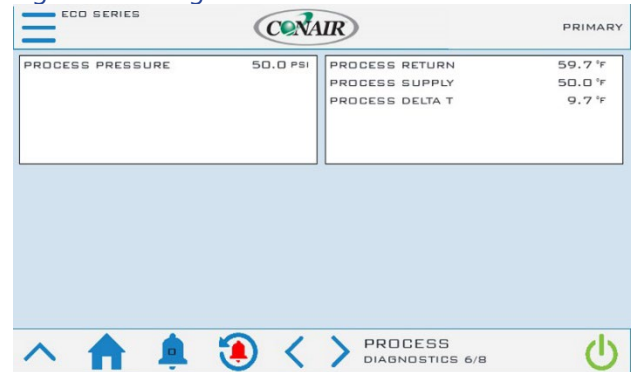


Figure 18 – Diagnostics Hardware Screen

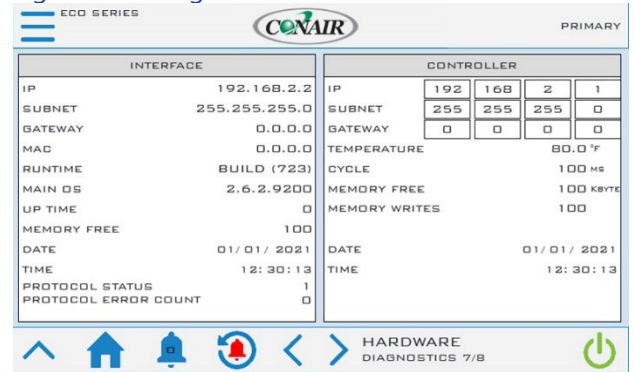
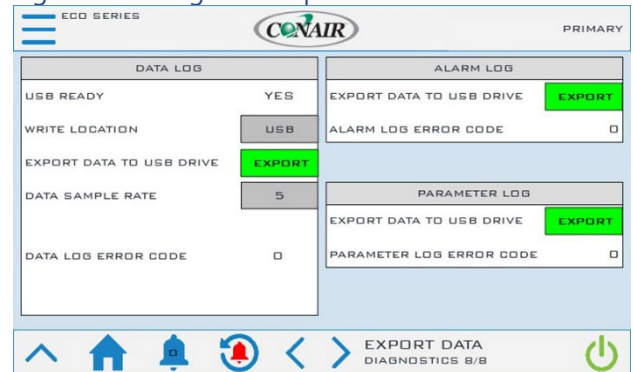


Figure 19 – Diagnostics Export Data Screen



Menu 1 – Security

Security Menu

To add protection to sensitive areas of the control program and provide some level of supervisory control to some operating parameters, the control system includes some security level protections.

Figure 20 – Security Menu Screen

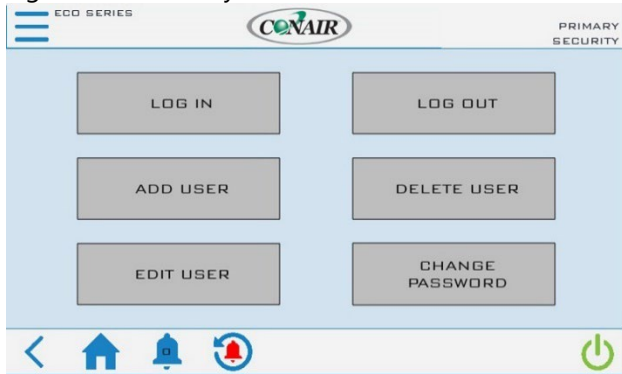


Figure 21 – Security – Log In Screen



Figure 22 – Security – Add User Screen

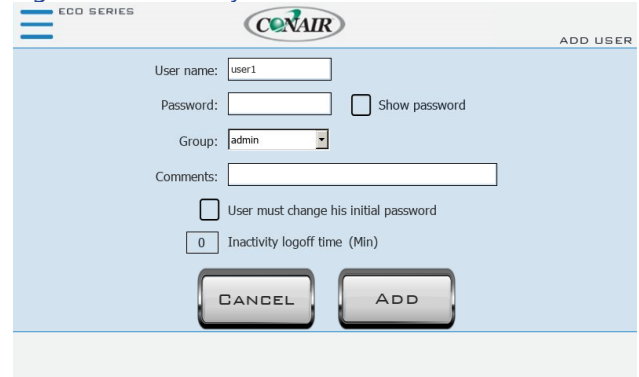


Figure 23 – Security – Edit User Screen

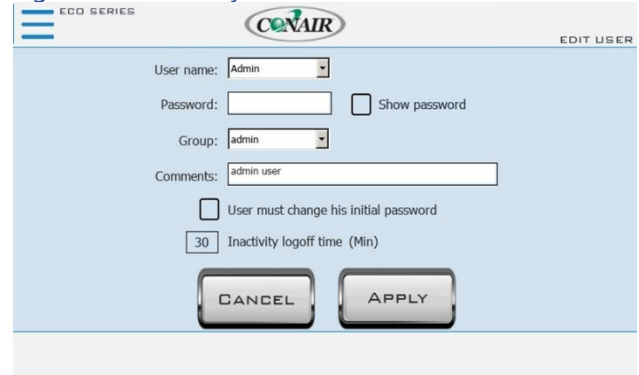


Figure 24 – Security – Delete User Screen

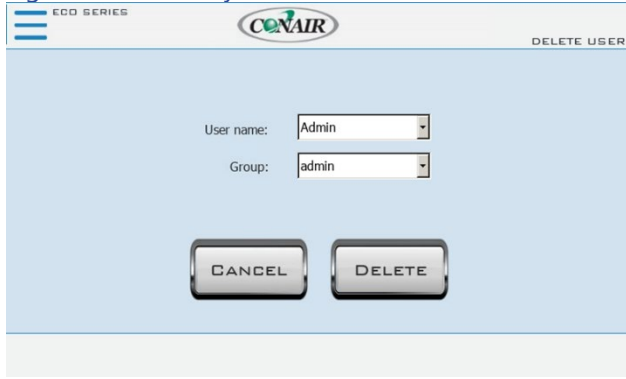


Figure 25 – Security – Change Password Screen

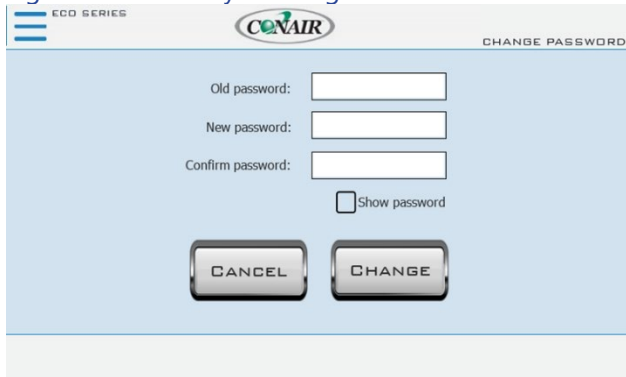


Table 2 – Security – Users and Passwords

User Name	Password	Screen Reference
User	9999	None
Supervisor	7720	None
Admin		None

Menu 1 – Inputs / Outputs

The Input / Output screens display the status of the various system inputs and outputs. This provides a detailed level of information for monitoring system operation and for diagnosing any performance issues or alarms that arise.

Figure 26 – Main Inputs/Outputs Screen

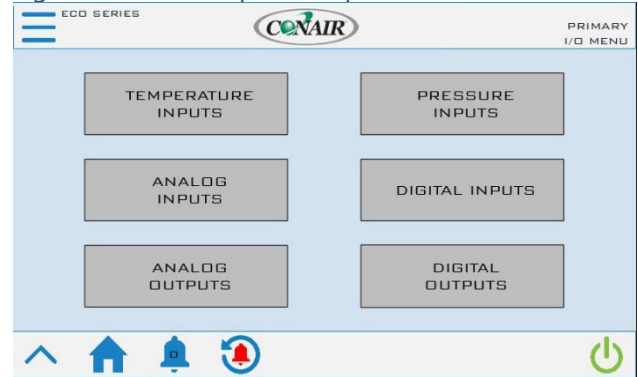


Figure 27 – Inputs/Outputs – Temperature Inputs Screen

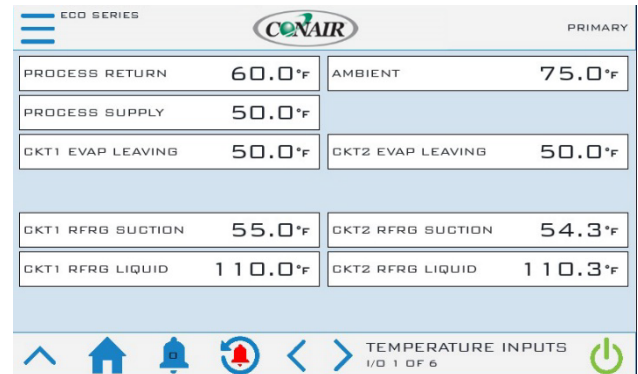


Figure 28 – Inputs/Outputs – Pressure Inputs Screen

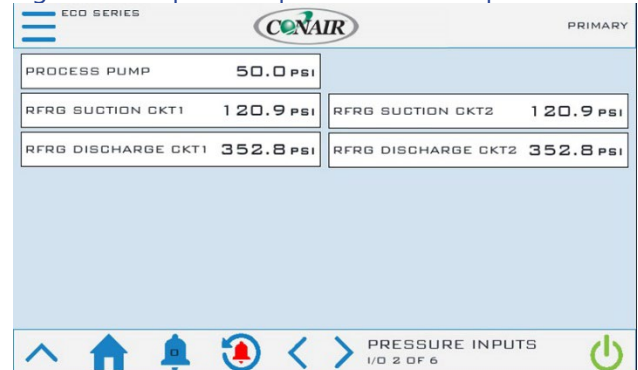


Figure 29 – Inputs/Outputs – Analog Inputs Screen

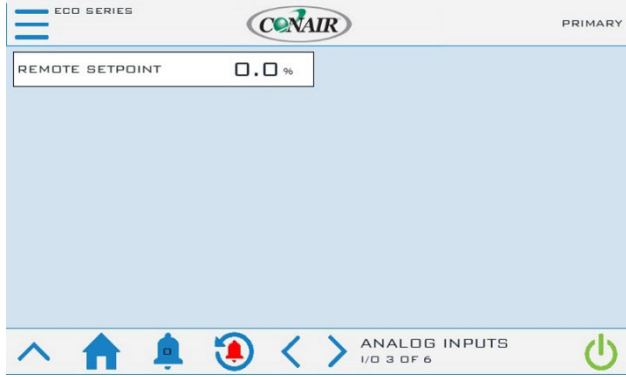


Figure 30 – Inputs/Outputs – Digital Inputs Screen

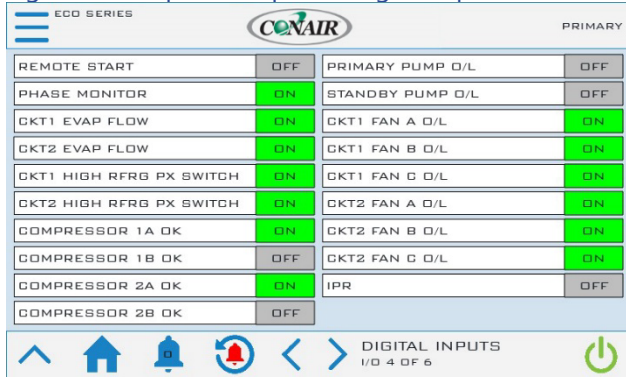


Figure 31 – Inputs/Outputs – Analog Outputs Screen

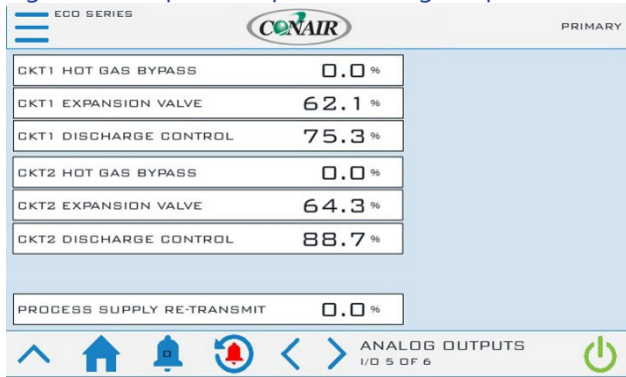
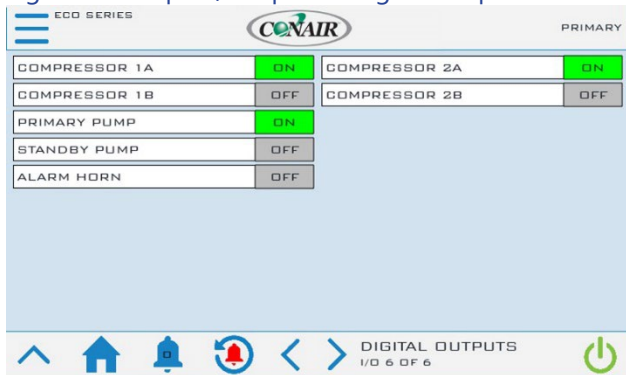


Figure 32 – Inputs/Outputs – Digital Outputs Screen



Menu 1 – User Setup

The control system allows for customization and adjustment of many parameters. In most cases, the factory default settings are sufficient; however, adjustment of parameters and settings is possible through the User Setup menus.

Figure – 33 –User Setup - Menu 1 Screen

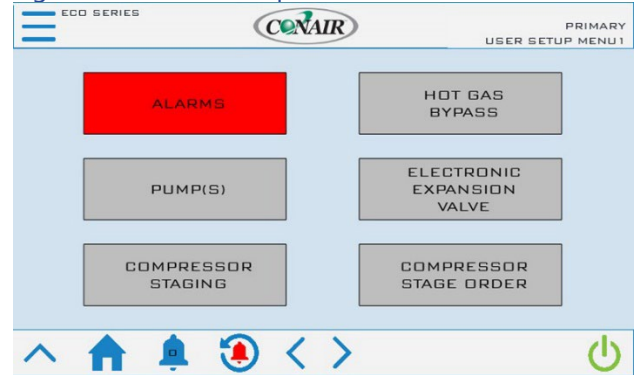


Figure 34 – User Setup - Menu 2 Screen

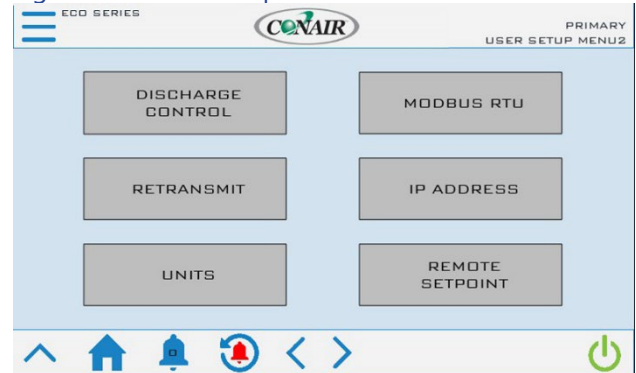
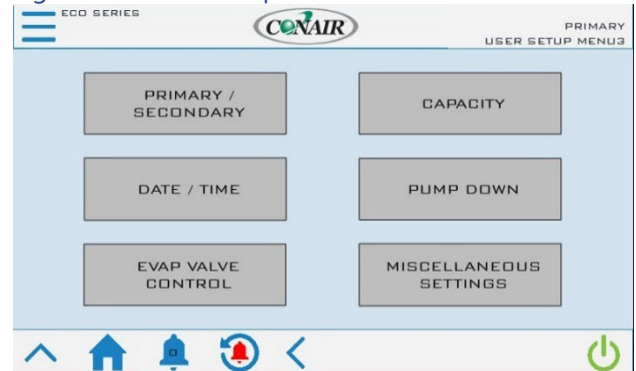


Figure 35 – User Setup - Menu 3 Screen



User Setup – Alarm Setup

Figure 36 – User Setup - Alarm Setup Screen

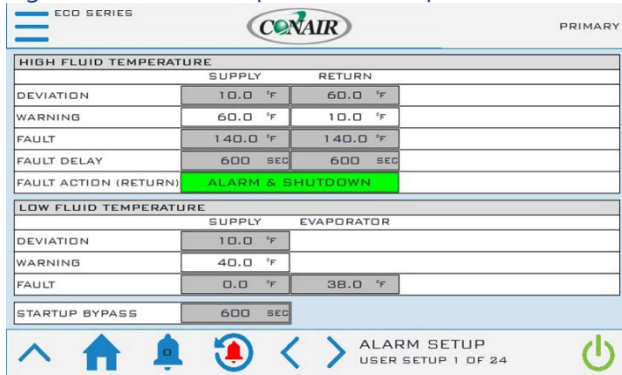


Table 3 – Alarm Setup Parameters

Menu Item	Description	Default Value
High Fluid Temperature		
Deviation	This deviation determines the warning trigger above chiller setpoint	Supply 10.0°F Return 50.0°F
Warning	Displays the calculated setpoint for the warning based on the deviation setpoint	
Fault	Absolute Temperature which the fault trigger will occur	140°F
Fault delay	Delay before the alarm will take action	180 sec.
Fault Action	Action takes when high return fluid alarm occurs	Alarm & Shutdown
Low Fluid Temperature		
Deviation	This deviation determines the warning trigger below chiller setpoint	Supply 10.0°F
Warning	Displays the calculated setpoint for the warning based on the deviation setpoint	
Fault	Absolute Temperature which the fault trigger will occur	Supply 0.0°F Evap 38.0°F
Startup Bypass	Delay time once the system has started before monitoring High and Low temperature Alarms.	1200 sec.
Flow Delay	Flow Sensor fault delay timer	5 sec.

User Setup – Hot Gas Bypass

Figure 37 – User Setup – Hot Gas Bypass Setup Screen

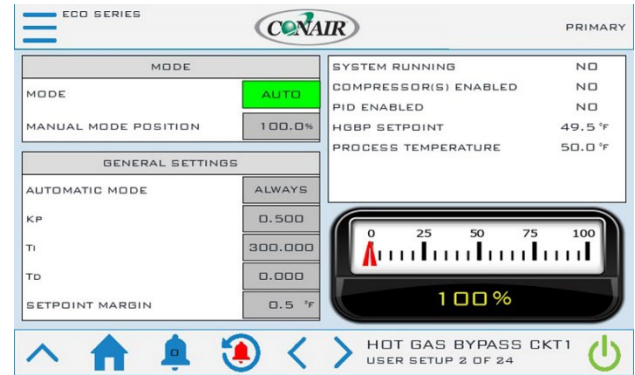


Table 4 – Hot Gas Bypass Valve Setup Parameters

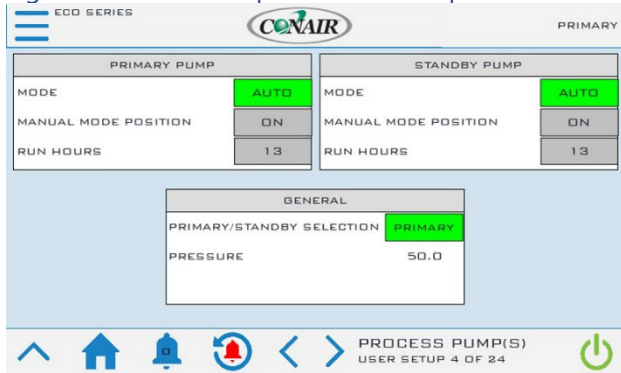
Menu Item	Description	Default Value
Mode Selection	AUTO = Follow Automatic Mode MANUAL = The manual mode value percent will be the output to the valve.	AUTO
Automatic Mode Selection	OFF = The valve will always be closed (zero output) LAST ONE = The valve will only respond relative to the demand PID when operating with the last compressor running ALWAYS = The valve will always respond relative to the demand PID regardless of how many compressors are running.	ALWAYS
Kp	Proportional PID value	0.500
Ti	Integral PID value	300.000
Td	Derivative PID value	0.000
Setpoint Margin	Temperature deviation below chiller setpoint to be used for hot gas bypass control setpoint	0.5°F

User Setup – Pump Control

Pump Control Screen

Displays pertinent pump status information for a system with the optional integral pump controls and provides the ability to change mode selection.

Figure 38 – User Setup – Process Pumps Screen



User Setup – EEV Control

The electronic expansion valve meters the amount of refrigerant into the evaporator in the precise quantity in order to maintain superheat. The difference between the saturated suction temperature and the suction line temperature is the superheat.

Figure 39 – User Setup – EEV Control Setup Screen

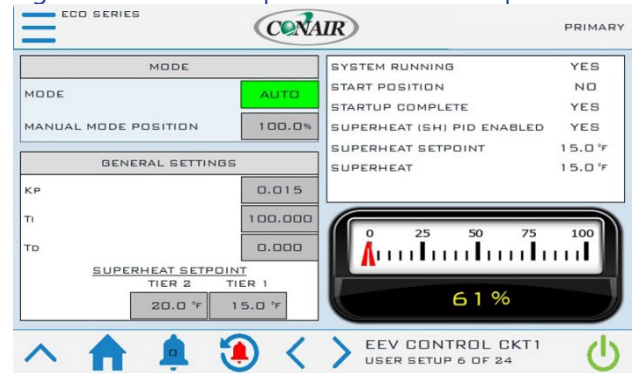


Table 5 – EEV Control Setup Parameters

Menu Item	Description	Default Value
Mode Selection	In Auto Mode, the control system adjusts the valve to maintain Super Heat. In manual mode, the system drives the valve to a fixed position and holds it there for service diagnostic purposes.	AUTO
Superheat Setpoint	The superheat varies depending on the number of compressors in operation for the specific refrigeration circuit. Only a trained refrigeration service technician should adjust these valves.	Tier 1: 15.0 Tier 2: 20.0
Kp	Proportional PID value	0.015
Ti	Integral PID value	100.000
Td	Derivative PID value	0.000

User Setup – Compressor Staging

Figure 40 – User Setup – Compressor Staging Setup Screen

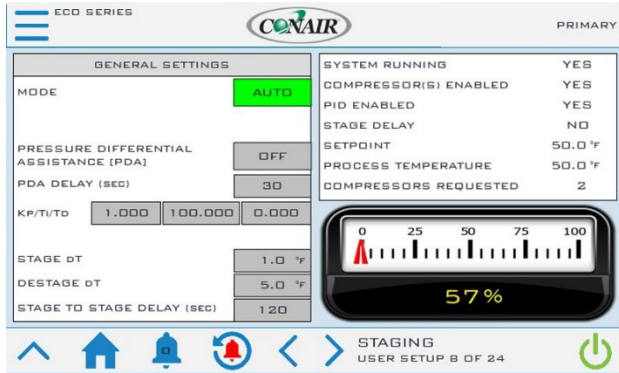


Table 6 – Compressor Staging Setup Parameters

Menu Item	Description	Default Value
Staging Mode	In Auto Mode, the control system adjusts the number of staged compressors relative to the demand and available compressors. In manual mode, the number of staged compressors depends on the Manual Mode Value relative to available compressors.	AUTO
Pressure Differential Assistance (PDA)	Pressure Differential Assistance will energize all compressors when the circuit first starts for the time specified in the PDA Delay parameter.	OFF
PDA Delay	Delay time to run ll compressor on circuit start	30 sec
Kp	Proportional PID value	1.000
Ti	Integral PID value	100.000
Td	Derivative PID value	0.000
Stage ΔT	If the process value rises above the set point by this differential, the first compressor will turn on.	1°F
Destage ΔT	If the process value drops below the set point by this differential, all compressors turn off.	5°F
Stage to Stage Delay	This is the minimum delay duration between stages on multiple compressors. During this time delay, the demand percent calculation ceases to allow the impact of the newly staged compressor to influence the system.	120 sec

User Setup – Stage Order

Compressor Stage Order Screen

Depicts the stage order of the local chiller. The stage order calculation uses the hours entered in the auto stage threshold parameter. The intent is to run the compressors with the least amount of hours first to help equalize the run hours of all the compressors

Figure 41 – User Setup – Stage Order Setup Screen

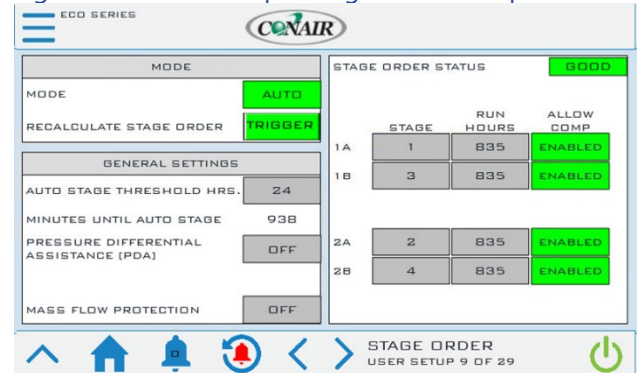


Table 7 – Stage Order Setup Parameters

Menu Item	Description	Default Value
Stage Mode	Automatic: calculates the stage order by the AUTO STAGE THRESHOLD parameter Manual: Manually enter the stage order	AUTO
Auto Stage Threshold	The number of run hours before recalculating the stage order	24 HOURS
Minutes Until Auto Stage	Minutes remaining until the stage calculation occurs	None

User Setup – Discharge Control Setup

Discharge Control Setup Screen

The EC fans modulate in order to maintain the discharge refrigerant pressure setpoint.

Figure 42 – User Setup – Discharge Control Setup Screen

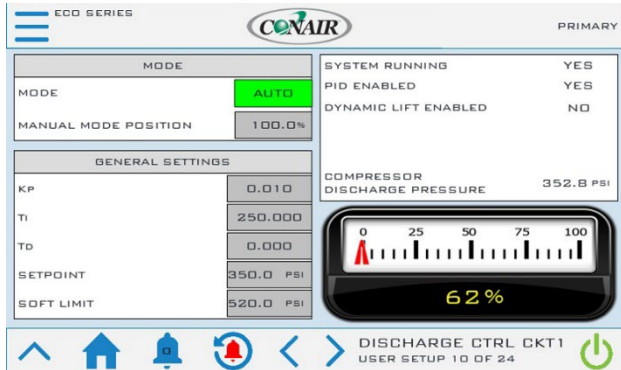


Table 8 – Discharge Control Setup Parameters

Menu Item	Description	Default Value
Mode	In Auto Mode, the fans adjust to maintain optimum performance. In manual mode, it holds to the Manual Mode Position input valve.	AUTO
Kp	Proportional PID value	0.010
Ti	Integral PID value	250.000
Td	Derivative PID value	0.000
Discharge Setpoint	Discharge Setpoint Value	350 PSIG
Low Temp Setpoint	Low temp setpoint relating to low percent setpoint – (During the start sequence)	45°F (7°C)

User Setup – Dynamic Lift Setup

Dynamic Lift Setup Screen

The Dynamic Lift control logic adjusts the chiller head pressure to improve energy efficiency.

Figure 43 – User Setup – Dynamic Lift Setup Screen

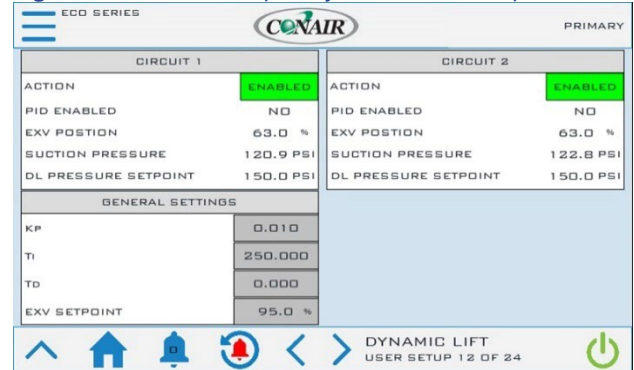


Table 9 – Dynamic Lift Parameters

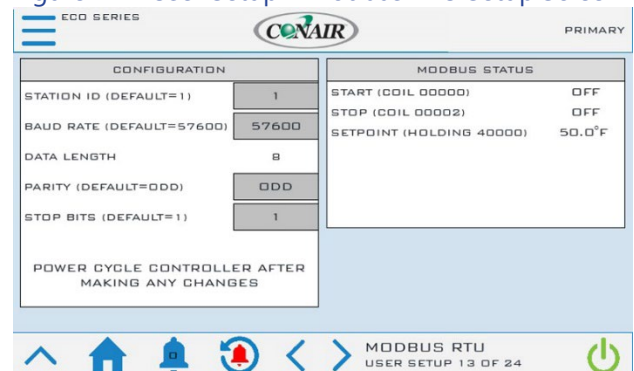
Menu Item	Description	Default Value
Action	Enable or Disable the Dynamic lift feature	ENABLED
Kp	Proportional PID value	0.010
Ti	Integral PID value	250.000
Td	Derivative PID value	0.000
EXV Setpoint	Starting point of EXV position	95%

User Setup - Modbus RTU Setup

Modbus RTU Setup Screen

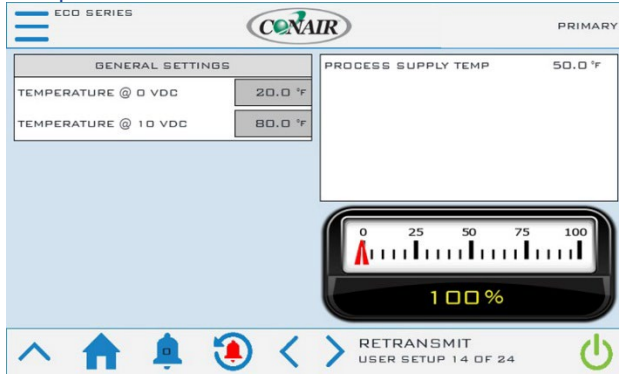
Provides the ability to modify communication parameters. Default Modbus RTU Settings: Baud-57600, Data Length-8, Parity-Odd, Stop Bits-1.

Figure 44 – User Setup – Modbus RTU Setup Screen



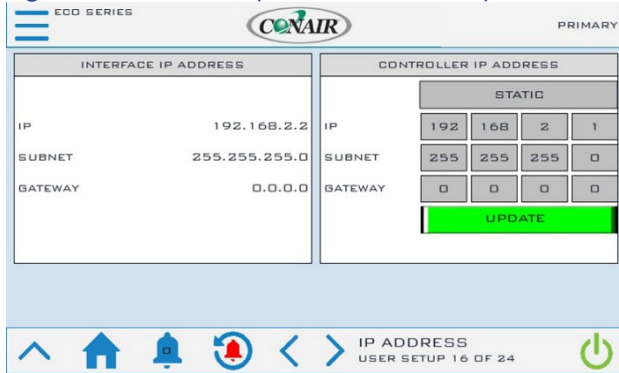
User Setup – Temperature Retransmit

Figure 45 – User Setup – Temperature Retransmit Setup Screen



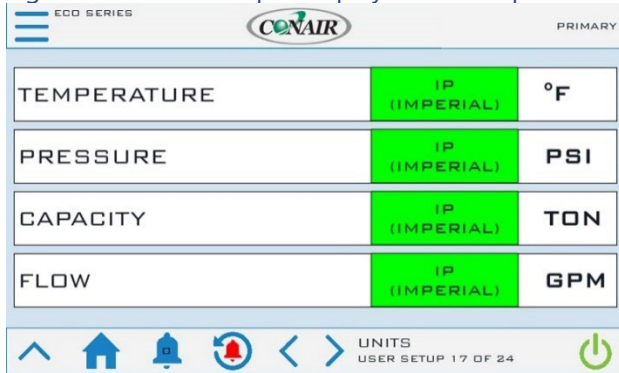
User Setup – IP Address

Figure 46 – User Setup – IP Address Setup Screen



User Setup – Units

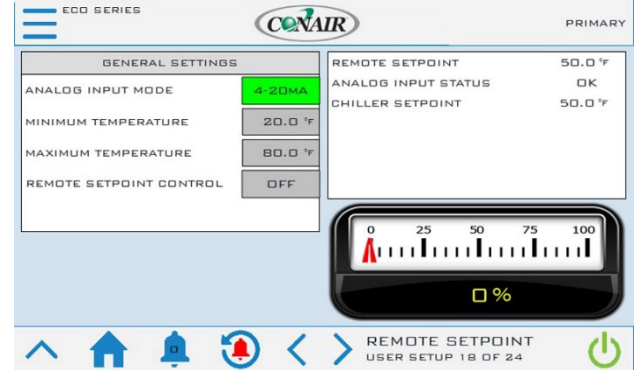
Figure 47 – User Setup – Display Units Setup Screen



User Setup – Remote Setpoint

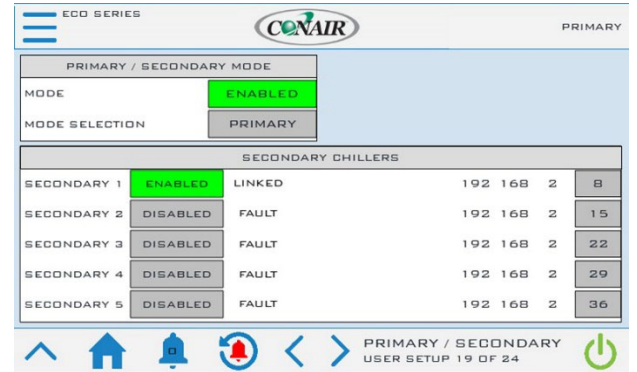
When the remote setpoint option is active, an incoming 4-20mA or 0-10VDC signal controls the setpoint of the primary chiller. The signal will span from the MINIMUM TEMPERATURE to the MAXIMUM TEMPERATURE as defined in the following figure.

Figure 48 – User Setup – Remote Setpoint Setup Screen



User Setup – Primary / Secondary

Figure 49 – User Setup – Primary / Secondary Setup Screen



User Setup – Chiller Capacity

Chiller Capacity Screen

Allows for adjustment of the nominal pipe size in which the flow sensor is located.

Figure 50 – User Setup – Chiller Capacity Setup Screen

SETTINGS	STATUS
NOMINAL PIPE SIZE (INCHES) 04.00	FLOW 288.0 GPM
	CAPACITY 120.0 TON

User Setup – Date/Time

Date/Time Screen

Date and Time is necessary for accurate data logging as well as fault log time stamps. Touch the fields for adjustment. The time is automaticity saved.

Figure 51 – User Setup – Date / Time Setup Screen

DATE M/D/Y 01 / 01 / 2021

TIME (H:M:S) 12 : 30 : 13

User Setup – Pump Down

Pump Down Screen

Allows for adjustments to the pump down sequence. The default mode is AUTO.

Figure 52 – User Setup – Pump Down Setup Screen

MODE
AUTO

CIRCUIT 1	CIRCUIT 2
MODE ACTIVE YES	MODE ACTIVE YES
SUCTION PRESSURE 113.0 PSI	SUCTION PRESSURE 114.0 PSI
WATCHDOG ACTIVE NO	WATCHDOG ACTIVE NO
CYCLE COUNTER 0	CYCLE COUNTER 0
PUMP DOWN FAULT NO	PUMP DOWN FAULT NO
EXCESSIVE CYCLING NO	EXCESSIVE CYCLING NO

User Setup – Evaporator Valve

Evaporator Valve Control Screen

Provides the ability to close off evaporator fluid flow when a circuit is not in operation. This allows for tighter temperature control.

Figure 53 – User Setup – Evaporator Valve Control Setup Screen

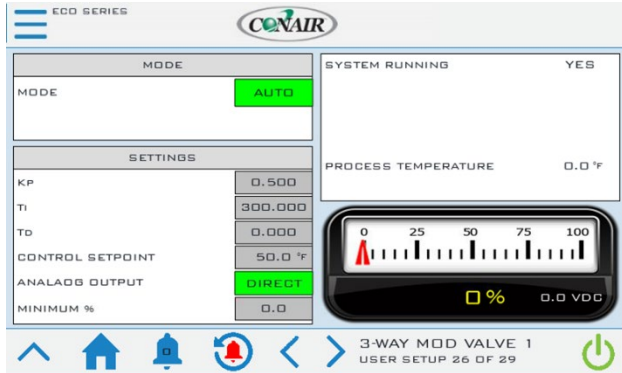
MODE
ACTIVE

CIRCUIT 1	CIRCUIT 2
MANUAL MODE AUTO	MANUAL MODE AUTO
DEMAND REQUEST YES	DEMAND REQUEST YES
VALVE CONTROL OUTPUT ON	VALVE CONTROL OUTPUT ON

User Setup – 3-Way Modulating Valve 1

Provides the ability to control flow through a 3-way modulating valve to maintain a specified temperature.

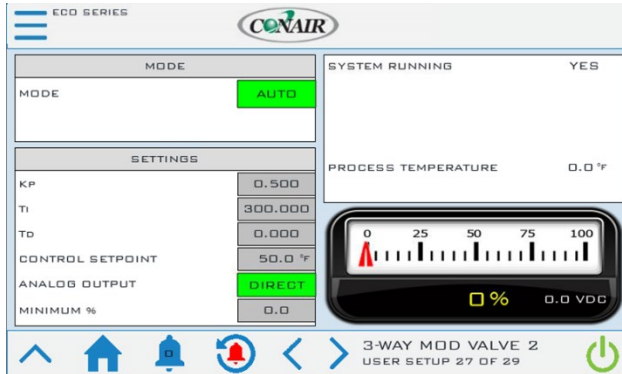
Figure 54 – User Setup - 3-Way Modulating Valve 1 Screen



User Setup – 3-Way Modulating Valve 2

This feature provides the ability to control flow through a secondary 3-way modulating valve to maintain a specified temperature.

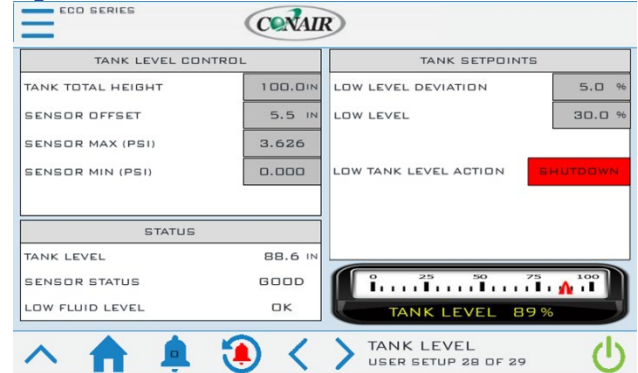
Figure 55 – User Setup – 3 Way Modulating Valve 2 Screen



User Setup – Tank Level

Provides the ability to view chiller tank level status as well as modify parameters for tank level control.

Figure 56 – Tank Level Screen



User Setup – Short Cycle

Provides the ability to eliminate short cycling in low load conditions.

Figure 57 – Short Cycle Enabled Screen

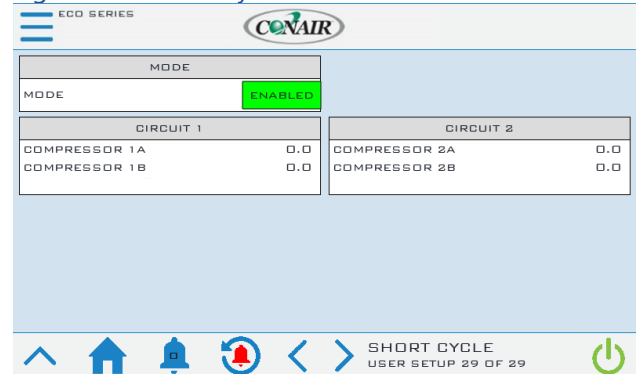
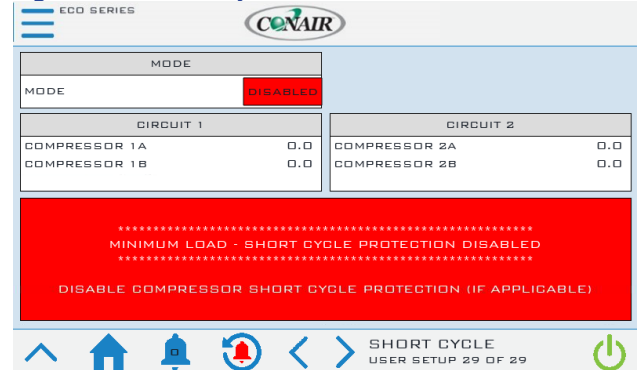


Figure 58 – Short Cycle Disabled Screen



User Setup – Misc Process Control

The chiller setpoint can be controlled via process supply or process return. Default control method is configured for process supply. In some applications, it is advantageous to control via process return.

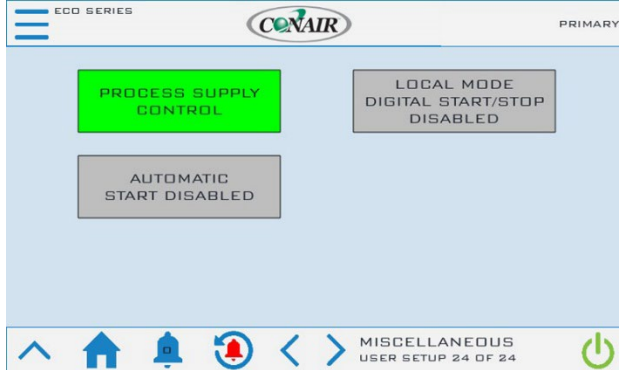
User Setup – Misc Local Mode

The Local/Remote Mode toggle indicates if the chiller is set to use a remote contact closure for remote start/stop. When active, the Local Mode toggle will indicate Local Mode Digital Start/Stop Enabled and when not active it will indicate Local Mode Digital Start/Stop Disabled.

User Setup – Misc Automatic Start

The Automatic Start toggle indicates if the chiller is set to automatically start if a power outage has occurred during a run state. When active, the Automatic Start toggle will indicate Automatic Start Enabled and when not active it will indicate Automatic Start Disabled.

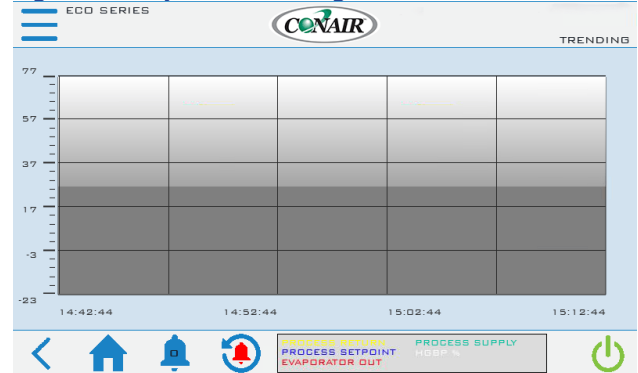
Figure 59 – User Setup – Misc Control Setup Screen



Menu 1 – Trending

A graphical representation of the core operating parameters of the system is in the trending screen. The trending screen displays the setpoint temperature, evaporator fluid out, process supply and return temperature, and optional hot gas bypass valve resistors (if present) for easy analysis of the system operation. Trending is always enabled and always running.

Figure 60 – System Trending Screen



Menu 2 – Full Screen

This screen provides a simple, large-font display of the process supply temperature for users who are primarily concerned only with this data point of the system operation.

Figure 61 – Menu 2 – Full Screen



Modbus

Modbus RTU and Modbus TCP/IP are both standard.

Default Modbus TCP/IP IP: 192.168.2.1, Default Modbus RTU: Baud-57600, Data Length-8, Parity-Odd, Stop Bits-1.

Table 10 – Modbus Table

Types	Index	Size	Variable Name	Data Type
Coil	0	1	HMI_START	Bool
Coil	1	1	SYSTEM_RUNNING	Bool
Coil	2	1	HMI_STOP	Bool
Coil	3	1	SYSTEM_STOPPING	Bool
I	4			
Coil	4	1	SYSTEM_NOT_RUNNING	Bool
Coil	5	1	PHASE_OK	Bool
Coil	10	1	CKT1_DEMAND_REQUEST	Bool
Coil	11	1	CKT1_COMPRESSORS_RUNNING	Bool
Coil	12	1	CKT2_DEMAND_REQUEST	Bool
Coil	13	1	CKT2_COMPRESSORS_RUNNING	Bool
Coil	20	1	AL_ALARMS_PRESENT	Bool
Coil	21	1	AL_GENERAL_ALARMS	Bool
Coil	22	1	AL_CRITICAL_ALARM	Bool
Coil	23	1	AL_PHASE_LOSS.Active	Bool
Coil	24	1	AL_FREEZESTAT.Active	Bool
Coil	25	1	AL_CKT1_FREEZESTAT.Active	Bool
Coil	26	1	AL_CKT2_FREEZESTAT.Active	Bool
Coil	27	1	AL_EVAP_FLOW.Active	Bool
Coil	28	1	AL_CKT1_EVAP_FLOW.Active	Bool
Coil	29	1	AL_CKT2_EVAP_FLOW.Active	Bool
Coil	30	1	AL_CKT1_RFRG_ALARM	Bool
Coil	31	1	AL_CKT2_RFRG_ALARM	Bool
Coil	32	1	AL_CKT1_CRITICAL_ALARM	Bool
Coil	33	1	AL_CKT2_CRITICAL_ALARM	Bool
Coil	34	1	AL_PROCESS_PUMP_OVLD.Active	Bool
Coil	35	1	AL_STANDBY_PUMP_OVLD.Active	Bool
Coil	36	1	AL_CKT1_LPS.Active	Bool
Coil	37	1	AL_CKT2_LPS.Active	Bool
Coil	38	1	AL_CKT1_LLPS.Active	Bool
Coil	39	1	AL_CKT2_LLPS.Active	Bool
Coil	40	1	AL_CKT1_DISCHARGE_PX_SOFT_FAULT.Active	Bool
Coil	41	1	AL_CKT2_DISCHARGE_PX_SOFT_FAULT.Active	Bool
Coil	42	1	AL_CKT1_HPS.Active	Bool
Coil	43	1	AL_CKT2_HPS.Active	Bool
Coil	44	1	AL_COMP1A_STATUS_FAULT.Active	Bool
Coil	45	1	AL_COMP2A_STATUS_FAULT.Active	Bool
Coil	46	1	AL_COMP1B_STATUS_FAULT.Active	Bool
Coil	47	1	AL_COMP2B_STATUS_FAULT.Active	Bool
Coil	48	1	AL_HIGH_HIGH_RETURN_FLUID_TEMP.Active	Bool
Coil	49	1	AL_HIGH_HIGH_SUPPLY_FLUID_TEMP.Active	Bool
Coil	50	1	AL_LOW_LOW_SUPPLY_FLUID_TEMP.Active	Bool
Coil	51	1	AL_CKT1_EXCESSIVE_PUMP_DOWN_CYCLING.Active	Bool
Coil	52	1	AL_CKT1_PUMP_DOWN_FAULT.Active	Bool
Coil	53	1	AL_CKT2_EXCESSIVE_PUMP_DOWN_CYCLING.Active	Bool
Coil	54	1	AL_CKT2_PUMP_DOWN_FAULT.Active	Bool
Coil	55	1	HIGH_SUPPLY_WATER_TEMP_WARNING	Bool
Coil	56	1	LOW_SUPPLY_WATER_TEMP_WARNING	Bool
Coil	57	1	HIGH_RETURN_WATER_TEMP_WARNING	Bool

Table 10 – Modbus Parameters (continued)

Types	Index	Size	Variable Name	Data Type
HoldingRegister	1	2	CHILLER_SETPOINT	Real
InputRegister	1	2	PLC_VERSION	Real
InputRegister	3	1	COMPRESSORS_RUNNING_TOTAL	Int
InputRegister	4	1	SYSTEM_DEMAND_PERCENT	Int
InputRegister	6	2	PROCESS_SUPPLY_FLUID	Real
InputRegister	8	2	PROCESS_RETURN_FLUID	Real
InputRegister	10	2	PROCESS_DELTA_T_HMI	Real
InputRegister	12	2	CKT1_EVAP_IN_FLUID_HMI	Real
InputRegister	14	2	CKT1_EVAP_OUT_FLUID_HMI	Real
InputRegister	16	2	CKT2_EVAP_OUT_FLUID_HMI	Real
InputRegister	18	2	CKT1_EVAP_DELTA_T_HMI	Real
InputRegister	20	2	CKT2_EVAP_DELTA_T_HMI	Real
InputRegister	22	2	CKT1_DISCHARGE_PERCENT	Real
InputRegister	24	2	CKT2_DISCHARGE_PERCENT	Real
InputRegister	26	2	CKT1_HGBP_PERCENT	Real
InputRegister	28	2	CKT2_HGBP_PERCENT	Real
InputRegister	30	2	CKT1_EXV_PERCENT	Real
InputRegister	32	2	CKT2_EXV_PERCENT	Real
InputRegister	34	2	CKT1_RFRG_SUCTION_TEMP_HMI	Real
InputRegister	36	2	CKT2_RFRG_SUCTION_TEMP_HMI	Real
InputRegister	38	2	CKT1_SUCTION_PRESSURE_HMI	Real
InputRegister	40	2	CKT2_SUCTION_PRESSURE_HMI	Real
InputRegister	42	2	CKT1_SUCTION_SATURATED_TEMP_HMI	Real
InputRegister	44	2	CKT2_SUCTION_SATURATED_TEMP_HMI	Real
InputRegister	46	2	CKT1_SUPERHEAT_HMI	Real
InputRegister	48	2	CKT2_SUPERHEAT_HMI	Real
InputRegister	50	2	CKT1_RFRG_DISCHARGE_TEMP_HMI	Real
InputRegister	52	2	CKT2_RFRG_DISCHARGE_TEMP_HMI	Real
InputRegister	54	2	CKT1_DISCHARGE_PRESSURE_HMI	Real
InputRegister	56	2	CKT2_DISCHARGE_PRESSURE_HMI	Real
InputRegister	58	2	CKT1_DISCHARGE_SATURATED_TEMP_HMI	Real
InputRegister	60	2	CKT2_DISCHARGE_SATURATED_TEMP_HMI	Real
InputRegister	62	2	CKT1_SUBCOOLING_HMI	Real
InputRegister	64	2	CKT2_SUBCOOLING_HMI	Real
InputRegister	66	2	CKT1_LIQUID_TEMP_HMI	Real
InputRegister	68	2	CKT2_LIQUID_TEMP_HMI	Real
InputRegister	70	2	PUMP_PRESSURE_HMI	Real
InputRegister	72	2	AMBIENT_TEMP_HMI	Real

Start-Up

Every unit is factory set to deliver chilled water in accordance with the standard operating specifications for that particular chiller. Due to variables involved with different applications and different installations, minor adjustments may be required during the initial start-up to ensure proper operation. Use a qualified refrigeration technician to perform the start-up procedure in sequence. The following serves as a checklist for the initial start-up and for subsequent start-ups if the chiller is out of service for a prolonged time.



WARNING: This equipment contains hazardous voltages that can cause severe injury or death.



WARNING: This equipment contains refrigerant under pressure. Accidental release of refrigerant under pressure can cause personal injury and or property damage.



WARNING: This equipment may contain fan blades or other sharp edges. Make sure all fan guards and other protective shields are securely in place.



WARNING: The exposed surfaces of motors, refrigerant piping, and other fluid circuit components can be very hot and can cause burns if touched with unprotected hands.



CAUTION: Disconnect and lock out incoming power before installing, servicing, or maintaining the equipment. Connecting power to the main terminal block energizes the entire electric circuitry of the unit. Electric power at the main disconnect should be shut off before opening access panels for repair or maintenance.



CAUTION: Wear eye protection when installing, maintaining, or repairing the equipment to protect against any sparks, debris, or fluid leaks.



CAUTION: Wear protective gloves when installing, maintaining, or repairing the equipment to protect against any sparks, debris, or fluid leaks.



CAUTION: Wire the unit ground in compliance with local and national codes.



CAUTION: The unit requires the main power to remain connected during off-hours to energize the compressor's crankcase heater. Disconnect main power only when servicing the chiller. The crankcase heater should remain on when the compressor is off to ensure liquid refrigerant does not accumulate in the compressor crankcase. Connect main power at least 24 hours prior to initial startup.

Step 1 – Connect Main Power

Connect main power properly ensuring it matches the voltage shown on the nameplate of the unit. Check the electrical phase sequence prior to start-up. Operation of the compressor with incorrect electrical phase sequencing will cause damage to the compressors. Check the phasing prior to applying power. The proper sequence is "ABC." If the phasing is incorrect, open the main power disconnect and switch two line leads on the main power terminal blocks (or the unit mounted disconnect). All electrical components are in-phase at the factory. Do not interchange any load leads that are from the unit contactors or the motor terminals. After making proper power connection and grounding, turn the main power on for a minimum of 24 hours prior to startup.

Step 2 – Fill Coolant Circuit

Check to make sure all process chilled-water piping connections are secure. Open the chiller cabinet and fill the coolant reservoir with the proper water or water/glycol solution following the guidelines shown below. When using a glycol solution only use glycol with a corrosion inhibitor.

System Fill Water Chemistry Requirements

The properties of water make it ideal for heat transfer applications. It is safe, non-flammable, non-poisonous, easy to handle, widely available, and inexpensive in most industrialized areas.

When using water as a heat transfer fluid it is important to keep it within certain chemistry limits to avoid unwanted side effects. Water is a "universal solvent" because it can dissolve many solid substances and absorb gases. As a result, water can cause the corrosion of metals used in a cooling system. Often water is in an open system (exposed to air) and when the water evaporates, the dissolved minerals remain in the process fluid. When the concentration exceeds the solubility of some

minerals, scale forms. The life giving properties of water can also encourage biological growth that can foul heat transfer surfaces.

To avoid the unwanted side effects associated with water cooling, proper chemical treatment and preventive maintenance is required for continuous plant productivity.

Unwanted Side Effects of Improper Water Quality

- Corrosion
- Scale
- Fouling
- Biological Contamination

Cooling Water Chemistry Properties

- Electrical Conductivity
- pH
- Alkalinity
- Total Hardness
- Dissolved gases

Chillers at their simplest have two main heat exchangers: one that absorbs the heat from the process (evaporator) and one that removes the heat from the chiller (condenser). All our chillers use stainless steel brazed plate evaporators. Our air-cooled chillers use air to remove heat from the chiller. These, as are all heat exchangers, are susceptible to fouling of heat transfer surfaces due to scale or debris. Fouling of these surfaces reduces the heat-transfer surface area while increasing the fluid velocities and pressure drop through the heat exchanger. All of these effects reduce the heat transfer and affect the efficiency of the chiller.

The complex nature of water chemistry requires a specialist to evaluate and implement appropriate sensing, measurement and treatment needed for satisfactory performance and life. The recommendations of the specialist may include filtration, monitoring, treatment and control devices. With the ever-changing regulations on water usage and treatment chemicals, the information is usually up to date when a specialist in the industry is involved. Table 1 shows the list of water characteristics and quality limitations.

Table 11 – Fill Water Chemistry Requirements

Water Characteristic	Quality Limitation
Alkalinity (HCO ₃ ⁻)	70-300 ppm
Aluminum (Al)	Less than 0.2 ppm
Ammonium (NH ₃)	Less than 2 ppm
Chlorides (Cl ⁻)	Less than 300 ppm
Electrical Conductivity	10-500µS/cm
Free (aggressive) Carbon Dioxide (CO ₂) [†]	Less than 5 ppm
Free Chlorine(Cl ₂)	Less than 1 PPM
HCO ₃ ⁻ /SO ₄ ²⁻	Greater than 1.0
Hydrogen Sulfide (H ₂ S)*	Less than 0.05 ppm
Iron (Fe)	Less than 0.2 ppm
Manganese (Mn)	Less than 0.1 ppm
Nitrate (NO ₃)	Less than 100 ppm
pH	7.5-9.0
Sulfate (SO ₄ ²⁻)	Less than 70 ppm
Total Hardness (dH)k	4.0-8.5

* Sulfides in the water quickly oxidize when exposed to air; therefore ensure agitation does not occur when taking a water sample. Unless tested immediately at the site, the sample will require stabilization with a few drops of one Molar zinc acetate solution, allowing accurate sulfide determination up to 24 hours after sampling. A low pH and high alkalinity cause system problems, even when both values are within the range shown. The term pH refers to the acidity, basicity, or neutrality of the water supply. Below 7.0, water is acidic. Neutral water contains a pH of 7.0.

† Dissolved carbon dioxide calculation is from the pH and total alkalinity values shown below or measured on the site using a test kit.

Dissolved Carbon Dioxide, PPM = TA x 2[(6.3-pH)/0.3] where TA = Total Alkalinity, PPM as CaCO₃

Freeze Protection

The chiller includes a flow switch for each fluid circuit to provide protection of the evaporator from freezing during a low-flow condition. In addition, there are safeties in place to protect the evaporator from freezing due to low fluid temperatures when the unit is operating. To protect the chiller from damage caused by freezing in the case of power failure or a stopped state or in cases when the anticipated set point temperature is below the freezing point of water, use an appropriate concentration of inhibited ethylene or propylene glycol solution or other suitable inhibited antifreeze solution. Ensure the antifreeze solution provides burst protection to a temperature 10°F colder than the lowest anticipated set point or outside ambient air temperature.



CAUTION: When your application requires the use of glycol, use industrial grade glycol specifically designed for heat transfer systems and equipment. Never use glycol designed for automotive applications. Automotive glycols typically have additives engineered to benefit the materials and conditions found in an automotive engine; however, these additives can gel and foul heat exchange surfaces and result in loss of performance or even failure of the chiller. In addition, these additives can react with the materials of the pump shaft seals resulting in leaks or premature pump failures.



WARNING: Ethylene Glycol is flammable at higher temperatures in a vapor state. Carefully handle this material and keep away from open flames or other possible ignition sources.

Step 3 – Check Condenser

It is important to verify the chiller will have adequate condenser cooling for proper chiller operation. Make sure all condenser coils are clean and free of debris.

Step 4 – Check Refrigerant Valves

During shipment or installation it is possible valves were closed. Verify that all refrigerant valves are open.

Step 5 – Check Low Temperature Alarm

Make sure the Low Temperature Alarm Set Point is set appropriately for the operating conditions of the chiller. The Low Temperature Alarm setting is in a password protected menu of the chiller controller. Refer to the control section of this manual for instructions on how to access this menu. The Low Temperature Alarm should be set at 10°F below the minimum chilled water temperature setting that the chiller will be operating. Also ensure the process coolant has sufficient freeze protection (glycol) to handle at least 5°F below the Low Temperature Alarm setting. All chillers are shipped from the factory with the Low Temperature Alarm set at 35°F. This is done to protect against a possible freeze-up if no glycol has been added to the coolant. Once the proper glycol solution has been added, the Low Temperature Alarm can be adjusted to the appropriate setting.



CAUTION: The manufacturer's warranty does not cover the evaporator from freezing. It is vital that the Freezestat is set properly.

Step 6 – Turn On Control Power

Turn on the control power by turning the control power switch to "On". The panel displays should now be illuminated. Due to extreme ambient temperatures that the unit may be exposed to during shipment and installation, you may encounter a High Refrigerant Pressure alarm when you turn on the control power. If this is the case, reset the alarm. Do not proceed until all alarms have been reset and no further alarm conditions are present.

Step 7 – Establish Coolant Flow

Establish flow through the chiller.

Note: The compressor will not start as long as the flow switch is open. A positive flow must be established through the evaporator before the compressor can operate.

Set water flow using a discharge throttling valve or flow control valve (by others). The valve should be the same size as the To Process connection of the chiller. Standard chillers are designed for approximately 2.4 gpm/ton of nominal capacity. A significant increase in flow beyond this in a standard chiller may result in excessive pressure loss and negatively impact chiller efficiency and in extreme cases may cause premature wear or damage of internal components.

Step 8 – Initial Unit Operation

Enter the desired leaving fluid temperature on the chiller HMI. Unless otherwise specified, the chiller is factory set to deliver coolant at 50°F. Adjust to the desired operating temperature. The chiller should now be controlling to the selected temperature. Please note that if there is insufficient load the compressor may cycle on and off causing swings in temperature.



WARNING: Under no circumstance should the High Refrigerant Pressure or the Low Compressor Pressure switch be deactivated. Failure to heed this warning can cause serious compressor damage, severe personal injury or death.

Operate the system for approximately 30 minutes. Check the liquid line sight glass. The refrigerant flow past the sight glass should be clear. Bubbles in the refrigerant indicate either low refrigerant charge or excessive pressure drop in the liquid line. A shortage of refrigerant is indicated if operating pressures are low and subcooling is low. Normal subcooling ranges are from 10°F to 20°F. If subcooling is not within this range, check the superheat and adjust if required. The superheat should be approximately 10°F. If the operating pressures, sight glass, superheat, and subcooling readings indicate a refrigerant shortage, charge refrigerant as required. With the unit running, add refrigerant using industry best practices until operating conditions become normal.



CAUTION: A clear sight glass alone does not mean that the system is properly charged. Also check system superheat, subcooling, and unit operating pressures. If both suction and discharge pressures are low but subcooling is normal, a problem other than refrigerant shortage exists. Do not add refrigerant, as this may result in overcharging the circuit.

Once proper flow and temperature are achieved, press the Stop button. The unit is now ready to be placed into service.

Preventive Maintenance

Once your chiller is in service, follow the maintenance procedures as closely as possible. Specific site conditions may require repeating certain tasks more frequently. The importance of a properly established preventive maintenance program cannot be overemphasized. Taking the time to follow these

simple procedures will result in substantially reduced downtime, reduced repair costs, and an extended useful lifetime for the chiller. Any monetary costs of implementing these procedures will usually more than pay for itself.

To make this as simple as possible, prepare a checklist with the recommended service operations and record the date and time when performed. At the end of this manual, you will find a checklist for this purpose. Please notice that there are locations for voltage readings, amperages, etc. for monitoring over time. With this information, maintenance personnel may be able to correct a potential problem before it causes any downtime. For best results, take these readings with a full heat load from process, preferably with similar operating conditions each time. The following is a list of suggested periodic maintenance.

Once a Week

1. Check to make sure that the To Process temperature is reasonably close to the Set Point temperature. If the temperature stays more than 5°F away from the set point, there may be a problem with the chiller. If this is the case, refer to the Troubleshooting Chart or contact our Customer Service Department.
2. Check the optional integral chiller and/or process pump discharge pressures. Investigate further if the pressure starts to stray away from the normal operating pressure.
3. Check the suction and discharge refrigerant pressure at the compressor.
4. Check each refrigerant sight glass for air bubbles or moisture indication. Bubbles in the refrigerant indicate either low refrigerant charge or excessive pressure drop in the liquid line. If the sight glass indicates that there is a refrigeration problem, have the unit serviced as soon as possible.
5. Check the compressor oil level in the sight glass. View the oil level through the sight glass while the compressor is running. The level will vary as the compressor loads and unloads.

Once a Month

Repeat items 1 through 5 and continue with the following.

6. Check the Y strainer between the return connection and the evaporator inlet. Open the blow-down valve attached to the strainer to flush the screen free of debris.
7. Check the flow sensor tip visually for signs of build-up and clean with a soft cloth. Is there some suborn calcium build-up that is not easily removed with a soft cloth use household vinegar as a cleaning agent to remove the deposit.
8. Shut off the power disconnect. Check the condition of electrical connections at all controls. Check for loose or frayed wires.
9. Check the main power supply to ensure it is acceptable, connected properly, and the unit has a proper ground (see Installation section of this manual for details).
10. Check the amp draws to each leg of the compressor(s) to confirm that it is drawing the proper current.
11. Check the system superheat and sub-cooling. Normal superheat is approximately 10°F; however, it may be high but not more than 15°F. Normal sub-cooling ranges from 10°F to 20°F.

Once Every 6 Months

Repeat items 1 through 11 and continue with the following.

12. Check for visible mechanical damage to the compressor.
13. Check for excessive vibration from other rotating equipment.
14. Check for signs of hot spot/discoloration on power cables.
15. Check all communication cables are secure and tight.
16. Check all electrical modules are secure.
17. Check system refrigerant charge and verify the system is still full charged.

18. Check the operation of the compressor crankcase heater. Energize the heater while the compressor is off. Taking an amp reading of the heater leads is the best way to determine the correct operation. Another way is to feel if there is localized heat around the crankcase heater when the heater is on.

Once a Year

Repeat items 1 through 18 and continue with the following.

19. Check the condition of the chilled water for algae and particulate fouling. Back flush the evaporator with water or another suitable cleaning agent. The frequency at which this task is required depends on specific site conditions.
20. Check the condition of the air cooled condensers for dirt and debris. If the coils are dirty or clogged, use a compressed air source to blow the contaminants out of the air coil. The frequency at which this task is required depends on specific site conditions.
21. Have a qualified laboratory perform a compressor oil analysis to determine system moisture content and acid level.

Cleaning the Operator Interface

Use of abrasive cleaners or solvents may damage the window. Do not scrub or use brushes. To clean the display window:

1. Disconnect power from the terminal at the power source.
2. Using a clean sponge or a soft cloth, clean the display with a mild soap or detergent. If paint or grease splash is present, remove before drying by rubbing lightly with isopropyl alcohol. Afterward, provide a final wash using a mild soap or detergent solution. Rinse with clean water.
3. Dry the display with a chamois or moist cellulose sponge to avoid water spots.

General Troubleshooting

Problem	Possible Cause	Remedy
Compressor will not start	Three-phase power monitor tripped	Check correct phasing of incoming power
	Compressor overload	Check supply voltage, amperage of each leg, contactor and wiring, overload set point
	Compressor contactor	Replace if faulty
	PLC output card	Replace if faulty
	Compressor failure	Contact Customer Service Department for assistance
Low refrigerant pressure	Low refrigerant charge	Contact refrigeration service technician
	Refrigerant leak	Contact refrigeration service technician
	Compressor suction service valve partially or fully closed	Open valve all the way
	Low refrigerant pressure sensor	Replace if faulty
	PLC input card	Replace if faulty
	Fouled evaporator flow	Clean evaporator inlet strainer. Clean the evaporator. If clogged and not cleanable, replace if necessary.
	Low evaporator flow	Check evaporator pumping system
High refrigerant pressure	Plugged condenser	Clean condenser
	Compressor discharge service valve is fully or partially closed	Open valve all the way
	Refrigerant circuit overcharged	Contact refrigeration service technician
	High refrigerant pressure sensor	Replace if faulty
	PLC input card	Replace if faulty
Freezestat	Low flow through evaporator	Adjust flow to proper level
	Freezestat control	Check for proper setting and replace if faulty
	Temperature sensor	Replace if faulty
	PLC input card	Replace if faulty
	Evaporator Y-strainer clogged or dirty	Clean Y-strainer
Insufficient cooling (temperature continues to rise above set point)	Process load too high	Check to make sure chiller is properly sized for process load
	Coolant flow outside of normal operating range	Adjust flow to proper level
	Insufficient condenser cooling	See high refrigerant pressure
	Refrigeration circuit problem	Contact refrigeration service technician
	Temperature sensor	Replace if faulty
	PLC input card	Replace if faulty
Erratic temperature control	Low coolant flow through evaporators	Adjust flow to proper level
	Overloading of chiller capacity	Check to make sure chiller is properly sized for process load
	Temperature sensor	Replace if faulty
	PLC input card	Replace if faulty

Preventive Maintenance Checklist

The following is a sample of a typical dual-circuit chiller checklist.

Maintenance Activity	Week Number											
	1	2	3	4	5	6	7	8	9	10	11	12
Date												
Temperature Control												
Pump Discharge Pressure												
Refrigerant Suction Pressure #1												
Refrigerant Suction Pressure #2												
Refrigerant Discharge Pressure #1												
Refrigerant Discharge Pressure #2												
Refrigerant Sight Glass #1												
Refrigerant Sight Glass #2												
Check and clean evaporator Y-strainer												
Electrical Connections												
Incoming Voltage												
Compressor #1 L1 Amps												
Compressor #1 L2 Amps												
Compressor #1 L3 Amps												
Compressor #2 L1 Amps												
Compressor #2 L2 Amps												
Compressor #2 L3 Amps												
Compressor #3 L1 Amps												
Compressor #3 L2 Amps												
Compressor #3 L3 Amps												
Compressor #4 L1 Amps												
Compressor #4 L2 Amps												
Compressor #4 L3 Amps												
Refrigerant Circuit #1 Superheat												
Refrigerant Circuit #2 Superheat												
Refrigerant Circuit #1 Sub-cooling												
Refrigerant Circuit #2 Sub-cooling												
*Oil Level Check #1												
*Oil Level Check #2												
*Oil Analysis #1												
*Oil Analysis #2												

* Once a year

Drawings

We have prepared a custom set of drawings for your unit and placed them inside the control panel prior to shipment. Please refer to these drawings when troubleshooting, servicing, and installing the unit. If you cannot find these drawings or wish to have additional copies sent, please contact our Customer Service Department and reference the serial number of your unit.

Notes


We're Here to Help

Conair has made the largest investment in customer support in the plastics industry. Our service experts are available to help with any problem you might have installing and operating your equipment. Your Conair sales representative also can help analyze the nature of your problem, assuring that it did not result from misapplication or improper use.

How to Contact Customer Service

To contact Customer Service personnel, call:



 **NOTE:** Normal operating hours are 8:00 am - 5:00 pm (EST). After hours emergency service is available at the same phone number.

From outside the United States, call: 814-437-6861

You can commission Conair service personnel to provide on-site service by contacting the Customer Service Department. Standard rates include an on-site hourly rate, with a one-day minimum plus expenses.

Before You Call...

If you do have a problem, please complete the following checklist before calling Conair:

- Make sure you have all model, control type from the serial tag, and parts list numbers for your particular equipment. Service personnel will need this information to assist you.
- Make sure power is supplied to the equipment.
- Make sure that all connectors and wires within and between control systems and related components have been installed correctly.
- Check the troubleshooting guide of this manual for a solution.
- Thoroughly examine the instruction manual(s) for associated equipment, especially controls. Each manual may have its own troubleshooting guide to help you.
- Check that the equipment has been operated as described in this manual.
- Check accompanying schematic drawings for information on special considerations.

Equipment Guarantee

Conair guarantees the machinery and equipment on this order, for a period as defined in the quotation from date of shipment, against defects in material and workmanship under the normal use and service for which it was recommended (except for parts that are typically replaced after normal usage, such as filters, liner plates, etc.). Conair's guarantee is limited to replacing, at our option, the part or parts determined by us to be defective after examination. The customer assumes the cost of transportation of the part or parts to and from the factory.

Performance Warranty

Conair warrants that this equipment will perform at or above the ratings stated in specific quotations covering the equipment or as detailed in engineering specifications, provided the equipment is applied, installed, operated and maintained in the recommended manner as outlined in our quotation or specifications.

Should performance not meet warranted levels, Conair at its discretion will exercise one of the following options:

- Inspect the equipment and perform alterations or adjustments to satisfy performance claims. (Charges for such inspections and corrections will be waived unless failure to meet warranty is due to misapplication, improper installation, poor maintenance practices or improper operation.)
- Replace the original equipment with other Conair equipment that will meet original performance claims at no extra cost to the customer.
- Refund the invoiced cost to the customer. Credit is subject to prior notice by the customer at which time a Return Goods Authorization Number (RGA) will be issued by Conair's Service Department. Returned equipment must be well crated and in proper operating condition, including all parts. Returns must be prepaid.

Purchaser must notify Conair in writing of any claim and provide a customer receipt and other evidence that a claim is being made.

Warranty Limitations

Except for the Equipment Guarantee and Performance Warranty stated above, Conair disclaims all other warranties with respect to the equipment, express or implied, arising by operation of law, course of dealing, usage of trade or otherwise, including but not limited to the implied warranties of merchantability and fitness for a particular purpose.
