

Material Storage Accessory Equipment



Rotary paddle switch

Point Level Sensors

- Capacitance Sensors and Level Switches

Application

- Monitors the level of material within a silo or surge bin.
- Specific size ranges to fit with your material storage requirements.



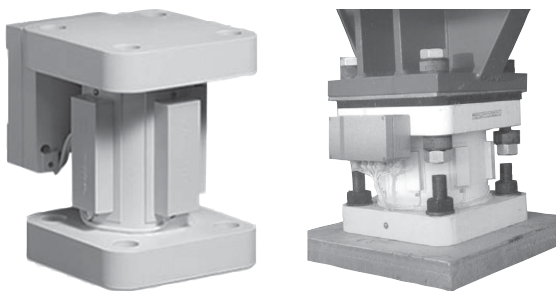
3-D sensing devices

Continuous Level Sensors

- 3-D Units

Application

- Monitors the current level of material within a silo.
- Specific size ranges to fit with your material storage requirements.
- Continuous level sensing.
- Used with various types of conveying material.

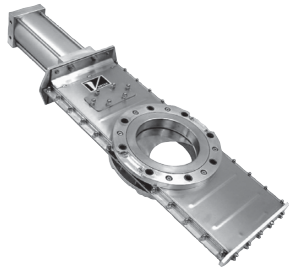


Load Stand

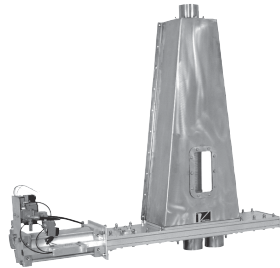
Load Cells

- Monitors silos or other large material storage equipment by measuring overall mass.
- Integrated mounting within your storage vessel's legs or gussets.
- Specific size ranges to fit with your material storage requirements.

Material Storage Accessory Equipment



Pneumatic knife gate



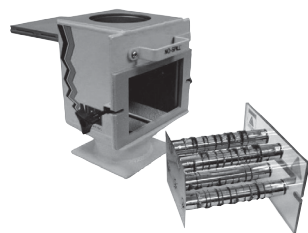
Two-way flex tube diverter

Valves

- Pneumatic valves
- Diverter Valves

Application

- For dry bulk solids using: gravity flow, dilute phasing or vacuum conveying.
- Controls the rate, source or shut-off of material flow of non-abrasive to moderately abrasive materials (powders, granulars or pellets).
- Conveying material from multiple sources for use with a single line material feed tube.



Drawer Magnet



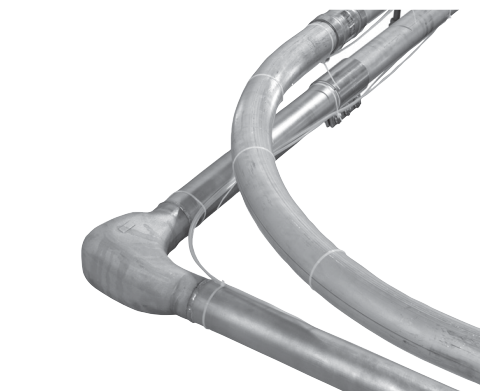
Metal detector

Magnets

- Metal-outs

Application

- Removing metal fines from free-flowing material.
- Preventing equipment damage and material contamination due to ferrous material.
- To create a contamination-free material flow.
- Used for high-flow applications.



High-wear elbows

Conveying High-Wear Elbows

- Ceramic-lined elbows
- Stainless Steel elbows
- Nickel-plated elbows

Application

- For high throughput and/or highly abrasive material conveying applications.
- Replacing conventional conveying elbows, reducing downtime and loss of material.
- Reduce angel-hair and streamers.