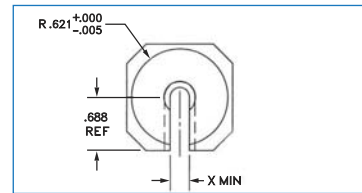


Pinch Roll Parts

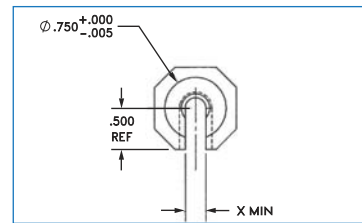
| Type | Part Number | Description |
|-------------------------------|---------------|---|
| Pinch Roll Bushing | MZ05-185-1320 | 3-6" W and 1-3" W |
| | MZ05-185-1321 | 2-4" W |
| Pinch Roll Rollers | A5002D008-1 | 3-6" W, STD Urethane Cover |
| | A5002D008-2 | 3-6" W, Solid Stainless Steel, FDA for Sticky materials |
| | A5002D008-3 | 3-6" W Solid Aluminum, Hard Anodized |
| | A5002D008-4 | 3-6" W FDA White Nitrial |
| Cutter Housing Conversion Kit | MZ8999-0267 | 3/4" to 1.5" for Bushing |



MZ05-185-1320

| | |
|-----|-------|
| -1= | .0625 |
| -2= | .1250 |
| -3= | .1875 |
| -4= | .2500 |
| -5= | .3125 |
| -6= | .3750 |

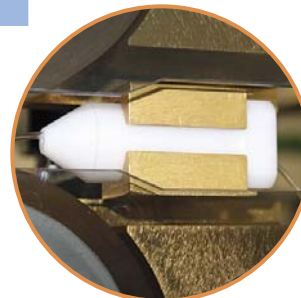
= X



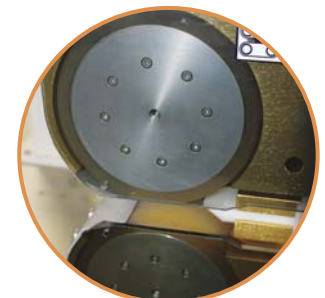
MZ05-185-1321

| | |
|-----|-------|
| -1= | .0623 |
| -2= | .125 |
| -3= | .188 |
| -4= | .250 |
| -5= | .313 |
| -6= | .375 |

= X



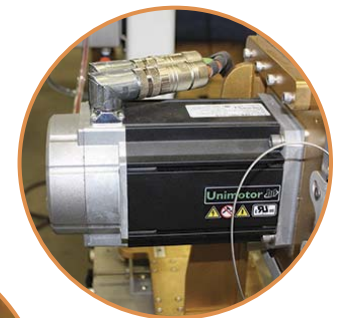
Pinch Roll Bushing



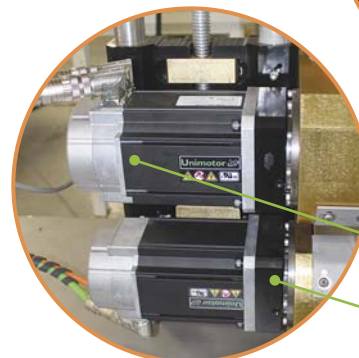
Pinch Roll Rollers

MedLine Puller / Cutter Parts

| Type | Part Number | Description |
|----------------|-------------|----------------------------|
| Servo Boom | MZ8277-0207 | 15:1, All MedLine models |
| | MZ8277-0215 | Planetary Reducer 10:1 |
| Servo Motor | MZ6050-0132 | 230 VAC, 8.31A, 3.24 Hp |
| | MZ6050-0129 | 460 VAC, 4.8A, 3.25 Hp |
| Puller Gearbox | MZ8277-0207 | 15:1, 1" x 12" Dual Drive |
| | MZ8277-0011 | 2:1, 2" x 12" Dual Drive |
| | MZ8281-0011 | 9:1, 2" x 12" Single Drive |
| | MZ8277-0006 | 4:1, 3" x 6" P.R. |
| | MZ8277-0004 | 2:1, 3" x 6" P.R. |



Servo Cutter Motor



Servo Motor

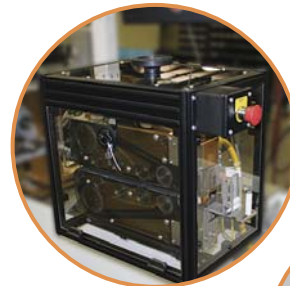
Gearbox

MedLine Puller / Cutter Parts (continued)

| Type | Part Number | Description |
|-----------------------|--------------|-------------|
| Enclosure for MedLine | 26107010P01 | 1-12 Unit |
| - Safety Guarding | 26202L010P01 | 2-12 Unit |

Note: This kit requires hole drilling and fabrication for mounting.

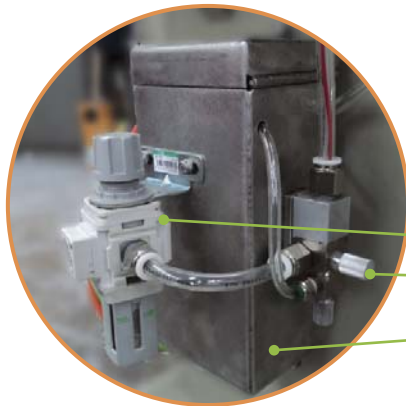
| | | |
|-------------|-------------|-------------------------------|
| Encoder Kit | MZ6140-0060 | Encoder, Incremental, 6000PPR |
| | 1545-30096 | Encoder Wheel, 1 foot |
| | 71301810 | Encoder Arm |
| | 71301811 | Encoder Bracket |



MedLine Enclosure



Encoder Kit



MedLine Puller / Cutter Mister Canister Parts

| Part Number | Description |
|---------------|------------------|
| 71311847 | Mister Parts Kit |
| 71311846 | Valve |
| 24992L040P111 | Tank |



| Part Number | Description |
|-------------|-----------------------|
| 0235-30232 | Master Mister |
| FTG-00115 | Air Fitting Straight |
| FTG-00099 | Air Fitting 90 degree |
| 5551-00097 | Air Regulator |
| 24101604 | Air Hose 1 ft |