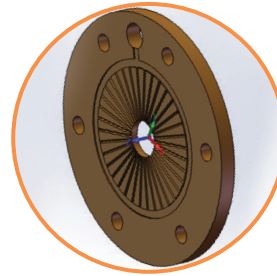
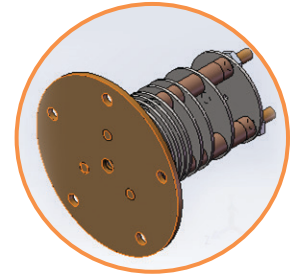


Calibrator Parts

Part Number	Description
MZ05-105-1012	Blank 4" Diameter Wafer Plate 3 Hole Pattern with 1/2 Diameter Pilot
MZ05-105-1014	Blank 2" Diameter Wafer Plate 3 hole Pattern with Pilot



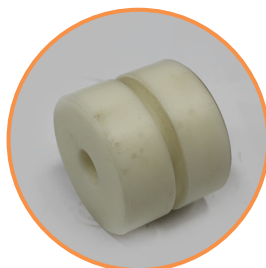
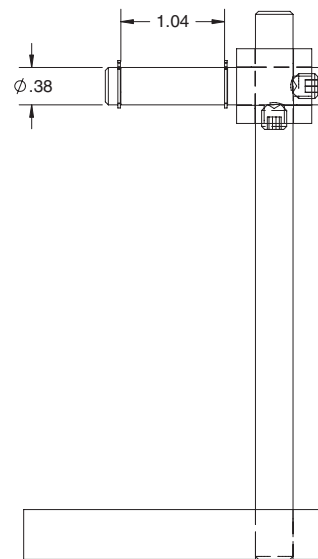
Water wells bronze with channels for cooling product separate from the tank bath.



Wafer & Split Design Calibrators

Rollers / Shafts / Pedestals

Part Number	Description	Material
MZ05-110-1011	Pedestal Assembly	304 Stainless Steel
MZ05-110-1012	Roller Shaft	304 Stainless Steel
MZ05-110-1015	Bracket - Roller Shaft	303 Stainless Steel



303792102

Part Number	Description
MZ05-110-1020	Horizontal Roller Shaft, 3/8" to 5/8"
MZ05-110-1026	2.5" Diameter V-Roller with Bearings (5/8" Shaft Required)
MZ05-110-1035	V-Roller for MCB (5/8" Shaft Required)
MZ05-110-1039	1.5" Diameter V-Roller with Bearings (3/8" Shaft Required)
MZ05-110-1203	22" Roller Rail
MZ05-110-1204	40" Roller Rail Assembly

